

WAAS CH 63212 W18B	APP CRS 185°	Rwy Idg 12004 TDZE 94 Apt Elev 96
--	------------------------	--

RNAV (GPS) RWY 18R

ORLANDO INTL (MCO)

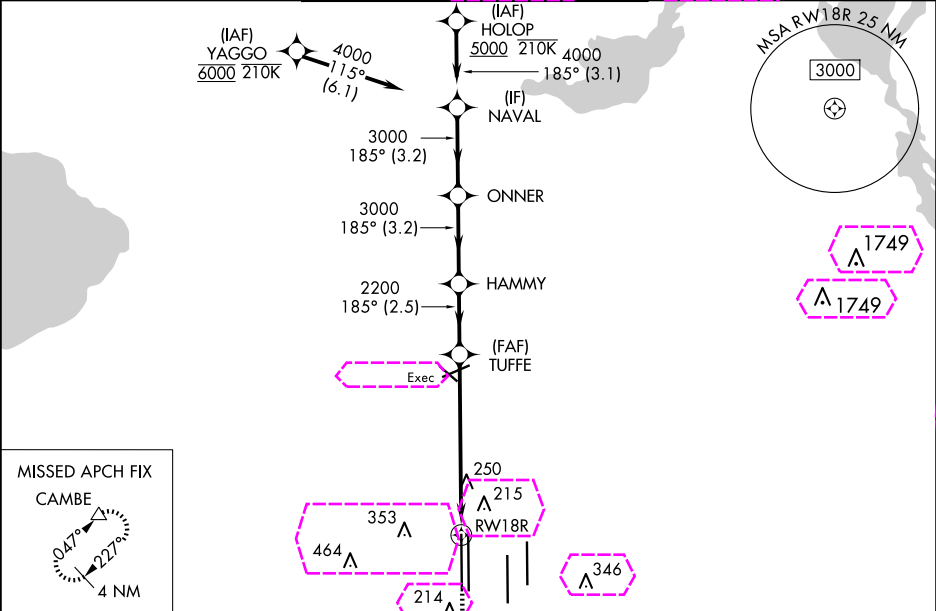
RNP APCH - GPS.

▼ LNAV procedure NA during simultaneous operations. Use of FD or AP required during simultaneous operations. Simultaneous approach authorized. For uncompensated Baro-VNAV systems, LNAV/VNAV NA below 1°C or above 54°C.

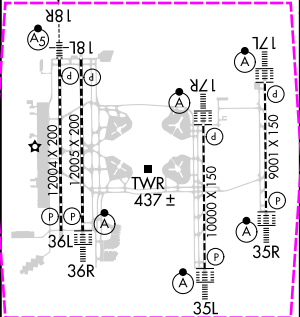
MALSR

MISSED APPROACH: Climb to 500 then climbing right turn to 4000 direct CAMBE and hold, continue climb-in-hold to 4000.

D-ATIS ARR 121.25 DEP 120.525	ORLANDO APP CON 124.8 307.0	ORLANDO TOWER 118.45 253.5 124.3 253.5 (Rwys 17L-35R, 17R-35L) (Rwys 18L-36R, 18R-36L)	GND CON 126.4 (East) 121.8 (West)	CLNC DEL 134.7 341.7	CPDLC
---	---------------------------------------	--	---	--	-------



ELEV 96	D	TDZE 94
----------------	----------	----------------



HIRL all Rwys
REIL Rwy 36L
TDZ/CL Rwys 17L/R, 18R, 35L/R
and 36R

HOLOP		VGSi and RNAV glidepath not coincident (VGSi Angle 3.00/TCH 71).		500	4000	CAMBE
NAVAL		ONNER		HAMMY		TUFFE
5000		185°		4000		3000
GP 3.00°		TCH 55		2200		2200
3.2 NM		3.2 NM		2.5 NM		5.2 NM
CATEGORY		A		B		C
LPV DA		294/18		200 (200-½)		
LNAV/VNAV DA		390/24		296 (300-½)		
LNAV MDA		540/24		446 (500-½)		540/45 446 (500-¾)
CIRCLING		740-1 644 (700-1)		740-1¾ 644 (700-¾)		740-2 644 (700-2)

RNAV (GPS) RWY 18R

WAAS CH 63212 W18B	APP CRS 185°	Rwy Ldg 12004 TDZE 94 Apt Elev 96
--	------------------------	--

RNAV (GPS) RWY 18R

ORLANDO INTL (MCO)

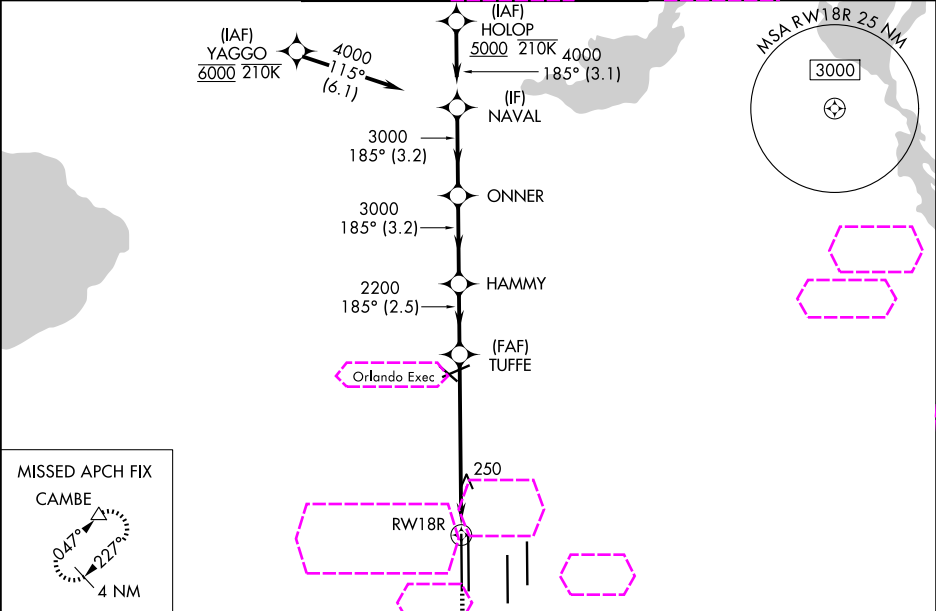
RNP APCH - GPS.

▼ LNAV procedure NA during simultaneous operations. Use of FD or AP required during simultaneous operations. Simultaneous approach authorized. For uncompensated Baro-VNAV systems, LNAV/VNAV NA below 1°C or above 54°C.

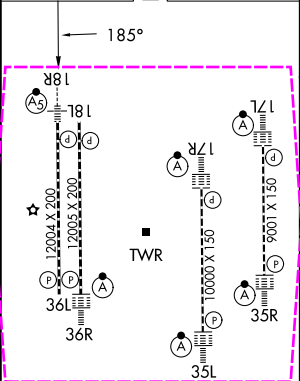
MALSR

MISSED APPROACH: Climb to 500 then climbing right turn to 4000 direct CAMBE and hold, continue climb-in-hold to 4000.

D-ATIS ARR 121.25 DEP 120.525	ORLANDO APP CON 124.8 307.0	ORLANDO TOWER 118.45 253.5 124.3 253.5	(17L-35R, 17R-35L) (18L-36R, 18R-36L)	GND CON 126.4 (E) 121.8 (W)	CLNC DEL 134.7 341.7	CPDLC
---	---------------------------------------	--	--	---	--	-------



ELEV 96	D	TDZE 94
----------------	----------	----------------



HIRL all Rwys
REIL Rwy 36L
TDZ/CL Rwys 17L/R, 18R, 35L/R
and 36R

HOLOP VGS1 and RNAV glidepath not coincident (VGS1 Angle 3.00/TCH 71).			
NAVAL ONNER HAMMY TUFFE			
5000 4000 3000 3000 2200 2200			
GP 3.00° TCH 55			
3.2 NM 3.2 NM 2.5 NM 5.2 NM 1.2 NM			
CATEGORY	A	B	C
LPV DA	294/18 200 (200-½)		
LNAV/VNAV DA	390/24 296 (300-½)		
LNAV MDA	540/24 446 (500-½)	540/45 446 (500-¾)	
CIRCLING	740-1 644 (700-1)	740-1¾ 644 (700-1¾)	740-2 644 (700-2)