

24249

| | | |
|--|------------------------|--|
| WAAS CH 66012 W18A | APP CRS 185° | Rwy Idg 12004 TDZE 96 Apt Elev 96 |
|--|------------------------|--|

RNAV (GPS) RWY 18L
ORLANDO INTL (MCO)

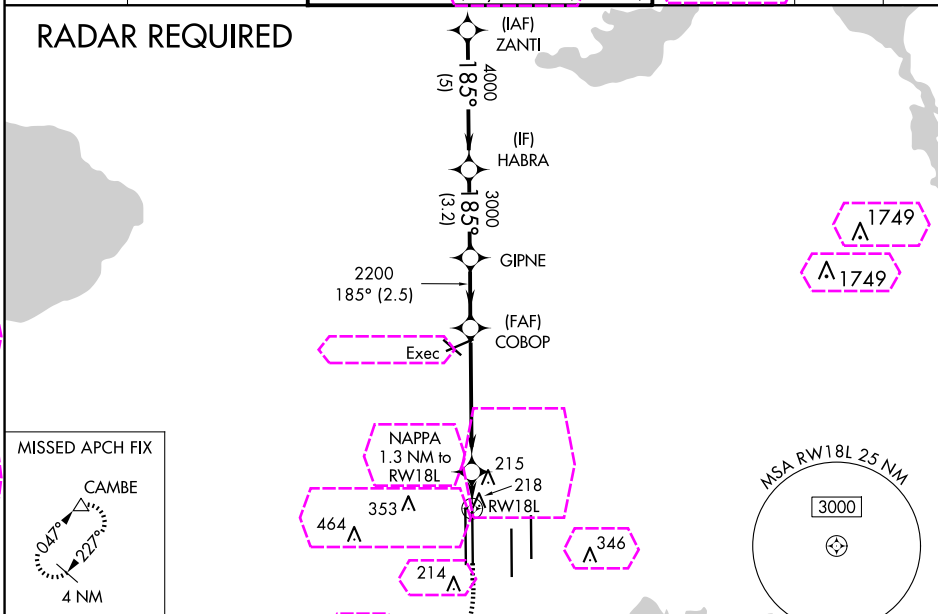
ORLANDO INTI (MCO)

T For uncompensated Baro-VNAV systems, LNAV/VNAV NA below -1°C (31°F) or above 54°C (130°F). DME/DME RNP-0.3 NA. Simultaneous approach authorized with Rwy 17L/R. LNAV procedure NA during simultaneous operations. Use of FD or AP providing RNAV track guidance required during simultaneous operations.

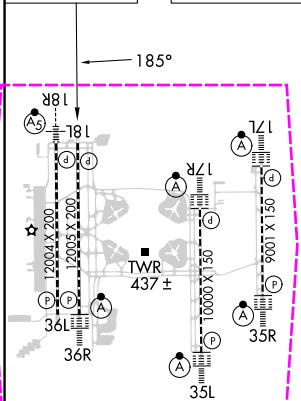
MISSED APPROACH:
Climb to 500 then climbing
right turn to 4000 direct
CAMBE and hold,
continue climb-in-hold to 4000.

| | | | | | | | |
|--------|---------|--------------------------------|---------------|-------------------------------|--------------|----------|-------|
| D-ATIS | | | ORLANDO TOWER | | GND CON | CLNC DEL | |
| ARR | 121.25 | | 118.45 | 253.5 (Rwys 17L-35R, 17R-35L) | 126.4 (East) | 134.7 | |
| DEP | 120.525 | ORLANDO APP CON 124.8 307.0 | 124.3 253.5 | (Rwys 18L-36R, 18R-36L) | 121.8 (West) | 341.7 | CPDLC |

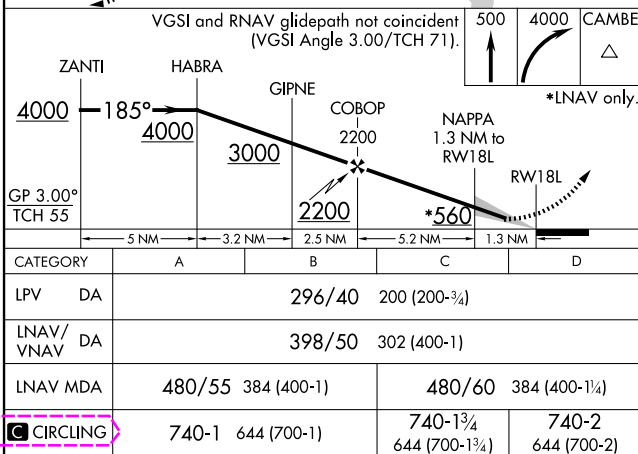
RADAR REQUIRED



| | | |
|---------|----------|---------|
| ELEV 96 | D | TDZE 96 |
|---------|----------|---------|



HIRL all Rwys
REIL Rwy 36L
TDZ/CL Rwys 17L/R, 18R, 35L/R
and 36R



ORLANDO, FLORIDA

Amdt 1 05FEB15

28°26'N-81°19'W

ORLANDO INTL (MCO)

RNAV (GPS) RWY 18L

ORLANDO, FLORIDA

AL-571 (FAA)

25219

| | | |
|--|------------------------|--|
| WAAS CH 66012 W18A | APP CRS 185° | Rwy Ldg 12004 TDZE 96 Apt Elev 96 |
|--|------------------------|--|

RNAV (GPS) RWY 18L

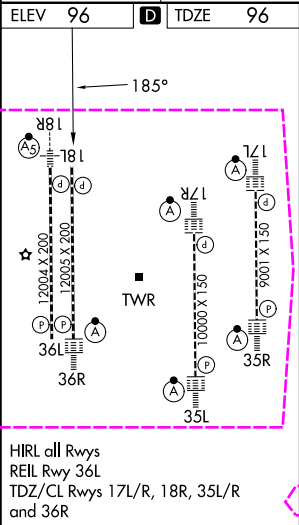
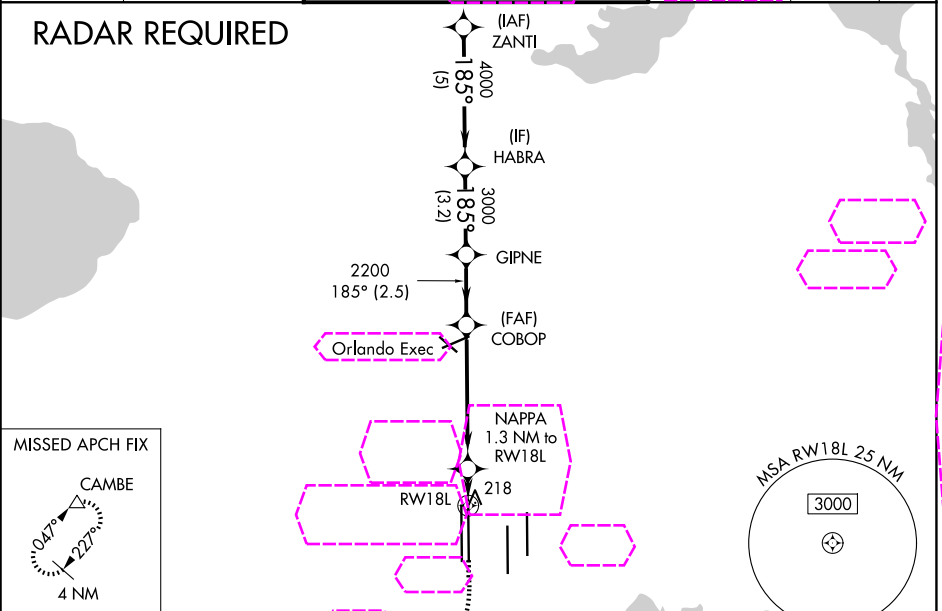
ORLANDO INTL (MCO)

▽ For uncompensated Baro-VNAV systems, LNAV/VNAV NA below -1°C (31°F) or above 54°C (130°F). DME/DME RNP-0.3 NA. Simultaneous approach authorized with Rwy 17L/R. LNAV procedure NA during simultaneous operations. Use of FD or AP providing RNAV track guidance required during simultaneous operations.

MISSED APPROACH:
Climb to 500 then climbing right turn to 4000 direct CAMBE and hold, continue climb-in-hold to 4000.

| | | | | | |
|---|---------------------------------------|--|---|--|-------|
| D-ATIS ARR 121.25 DEP 120.525 | ORLANDO APP CON 124.8 307.0 | ORLANDO TOWER 118.45 253.5 (17L-35R, 17R-35L) 124.3 253.5 (18L-36R, 18R-36L) | GND CON 126.4 (E) 121.8 (W) | CLNC DEL 134.7 341.7 | CPDLC |
|---|---------------------------------------|--|---|--|-------|

RADAR REQUIRED



| | |
|----------------------------------|---|
| ELEV 96 | TDZE 96 |
| 185° | |
| HABRA | |
| GIPNE | |
| COBOP | |
| NAPP 1.3 NM to RW18L | |
| RW18L | |
| *LNAV only. | |
| 500 4000 CAMBE | |
| GP 3.00° TCH 55 | |
| 5 NM 3.2 NM 2.5 NM 5.2 NM 1.3 NM | |
| CATEGORY | A B C D |
| LPV DA | 296/40 200 (200-¾) |
| LNAV/VNAV DA | 398/50 302 (400-1) |
| LNAV MDA | 480/55 384 (400-1) 480/60 384 (400-1¼) |
| CIRCLING | 740-1 644 (700-1) 740-1¾ 644 (700-1¾) 740-2 644 (700-2) |

ORLANDO, FLORIDA
Amdt 1 05FEB15

28°26'N-81°19'W

ORLANDO INTL (MCO)
RNAV (GPS) RWY 18L

SE-3, 07 AUG 2025 to 04 SEP 2025

SE-3, 07 AUG 2025 to 04 SEP 2025