

(PRICY.PRICY4) 24305

AL-571 (FAA)

## PRICY FOUR ARRIVAL (RNAV) Arrival Routes

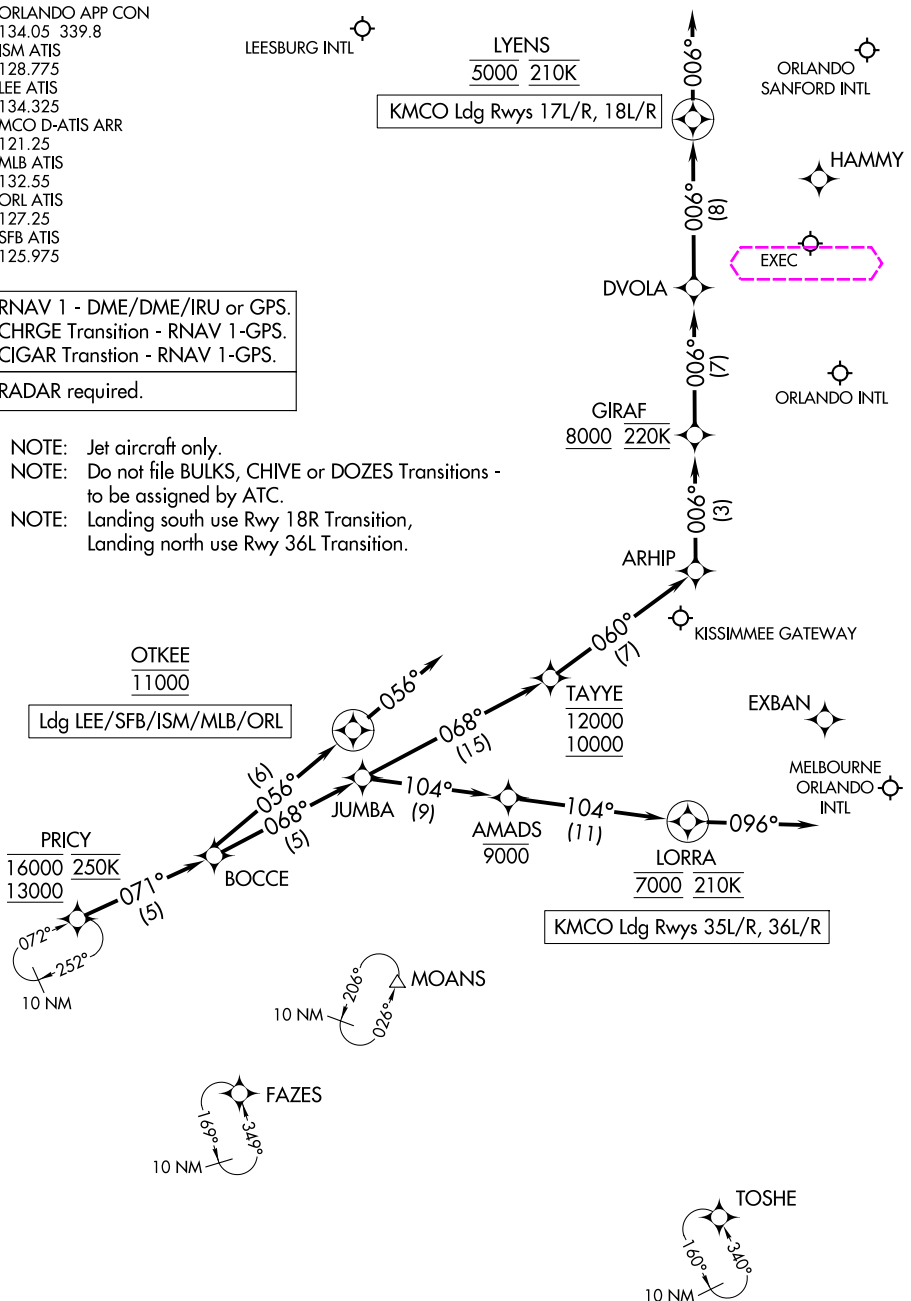
ORLANDO, FLORIDA

ORLANDO APP CON  
134.05 339.8  
ISM ATIS  
128.775  
LEE ATIS  
134.325  
MCO D-ATIS ARR  
121.25  
MLB ATIS  
132.55  
ORL ATIS  
127.25  
SFB ATIS  
125.975

RNAV 1 - DME/DME/IRU or GPS.  
CHRG Transition - RNAV 1-GPS.  
CIGAR Transition - RNAV 1-GPS.

RADAR required.

- NOTE: Jet aircraft only.  
NOTE: Do not file BULKS, CHIVE or DOZES Transitions - to be assigned by ATC.  
NOTE: Landing south use Rwy 18R Transition, Landing north use Rwy 36L Transition.



(CONTINUED ON FOLLOWING PAGE)

## PRICY FOUR ARRIVAL (RNAV) Arrival Routes

ORLANDO, FLORIDA

(PRICY.PRICY4) 31OCT24

SE-3, 10 JUL 2025 to 07 AUG 2025

SE-3, 10 JUL 2025 to 07 AUG 2025

## PRICY FOUR ARRIVAL (RNAV) Arrival Routes

ORLANDO, FLORIDA

ORLANDO APP CON  
134.05 339.8  
ISM ATIS  
128.775  
LEE ATIS  
134.325  
MCO D-ATIS ARR  
121.25  
MLB ATIS  
132.55  
ORL ATIS  
127.25  
SFB ATIS  
125.975

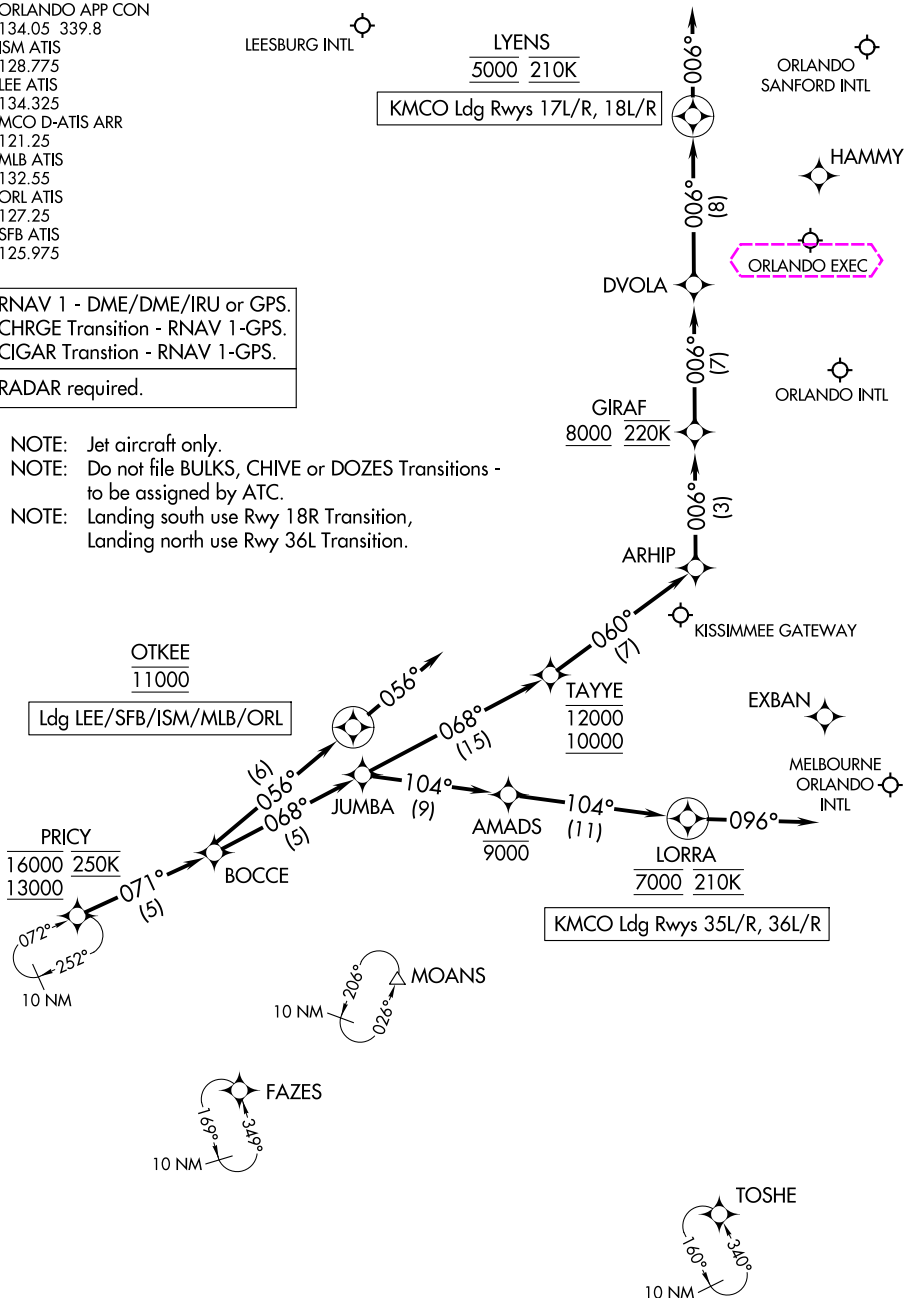
RNAV 1 - DME/DME/IRU or GPS.  
CHRG Transition - RNAV 1-GPS.  
CIGAR Transition - RNAV 1-GPS.

RADAR required.

NOTE: Jet aircraft only.

NOTE: Do not file BULKS, CHIVE or DOZES Transitions - to be assigned by ATC.

NOTE: Landing south use Rwy 18R Transition,  
Landing north use Rwy 36L Transition.



NOTE: Chart not to scale.

(CONTINUED ON FOLLOWING PAGE)

### PRICY FOUR ARRIVAL (RNAV) Arrival Routes

ORLANDO, FLORIDA

(PRICY.PRICY4) 31OCT24

SE-3, 07 AUG 2025 to 04 SEP 2025

SE-3, 07 AUG 2025 to 04 SEP 2025