

(ORLA6.ORLA) 24081

AL-571 (FAA)

ORLANDO INTL (MCO)

ORLANDO, FLORIDA

ORLANDO SIX DEPARTURE

**TOP ALTITUDE:
7000**

RADAR required - Takeoff rwys 35L/R, 36L/R: DME required.

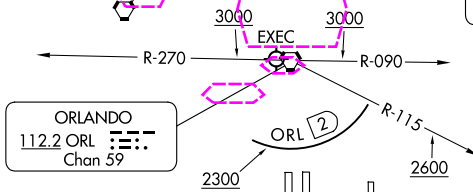
D-ATIS DEP
120.525
CLNC DEL
134.7 341.7
CPDLC
GND CON
126.4 (East)
121.8 (West)
ORLANDO TOWER
118.45 253.5
(Rwys 17L-35R, 17R-35L)
124.3 253.5
(Rwys 18L-36R, 18R-36L)
ORLANDO DEP CON
124.8 307.0 (East)
120.15 284.7 (West)

SEMINOLE
117.5 SZW
Chan 122

CRAIG
114.5 CRG
Chan 92

OCALA
113.7 OCF
Chan 84

ORMOND BEACH
112.6 OMN
Chan 73



ST PETERSBURG
116.4 PIE
Chan 111

SARASOTA
117.0 SRQ
Chan 117

LAKE LAND
116.0 LAL
Chan 107

MELBOURNE
115.85 MIB
Chan 105 (Y)

LEE COUNTY
114.15 RSW
Chan 88 (Y)

PALM BEACH
115.7 PBI
Chan 104

TAKEOFF MINIMUMS

Rwys 17L/R, 18L/R, 35L/R, 36L/R: Standard.

NOTE: Chart not to scale.



DEPARTURE ROUTE DESCRIPTION

TAKEOFF ALL RUNWAYS: Climb on assigned heading for RADAR vectors to assigned route. Maintain 7000. Expect filed altitude 10 minutes after departure.

ALL AIRCRAFT: ATC crossing restrictions and climb gradients: if unable to accept crossing restrictions and climb rates advise ATC prior to taxi.

Rwys 35L/R, 36L/R: Cross 2 DME south of ORL VORTAC at or above 2300, cross ORL VORTAC R-115 at or above 2600, cross ORL VORTAC R-090 or R-270 at or above 3000. Rwys 35L/R: 566' per NM to 3000, Rwy 36L: 637' per NM to 3000, Rwy 36R: 621' per NM to 3000.

ORLANDO SIX DEPARTURE

(ORLA6.ORLA) 23FEB23

ORLANDO, FLORIDA

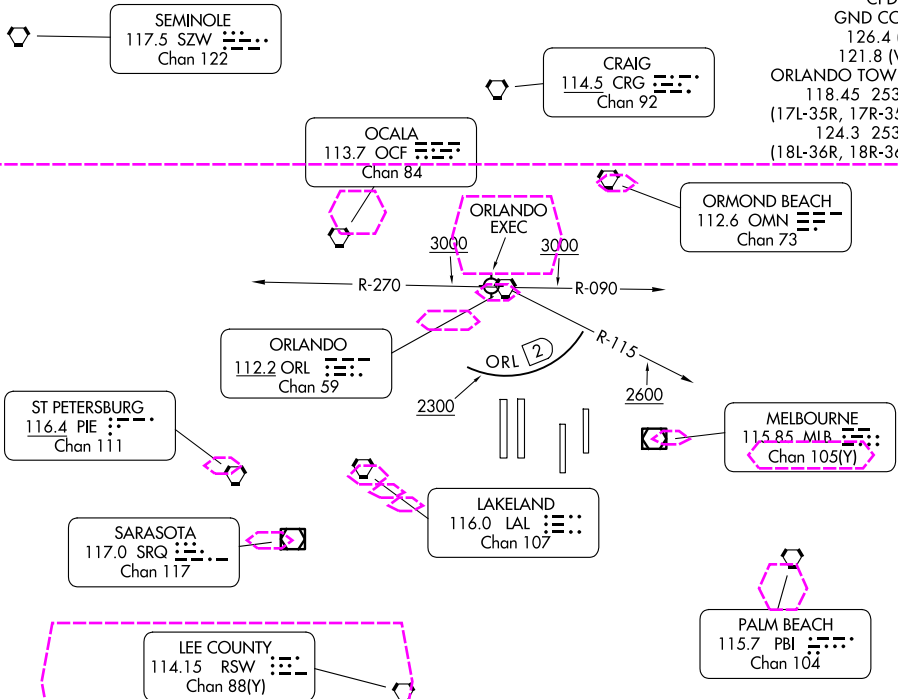
ORLANDO INTL (MCO)

ORLANDO SIX DEPARTURE

TOP ALTITUDE:
7000

RADAR required - Takeoff Rwy 35L/R, 36L/R: DME required.

ORLANDO DEP CON
124.8 307.0 (E)
120.15 284.7 (W)
D-ATIS DEP
120.525
CLNC DEL
134.7 341.7
CPDLC
GND CON
126.4 (E)
121.8 (W)
ORLANDO TOWER
118.45 253.5
(17L-35R, 17R-35L)
124.3 253.5
(18L-36R, 18R-36L)



TAKEOFF MINIMUMS

Rwys 17L/R, 18L/R, 35L/R, 36L/R: Standard.

NOTE: Chart not to scale.

DEPARTURE ROUTE DESCRIPTION

TAKEOFF ALL RUNWAYS: Climb on assigned heading for RADAR vectors to assigned route. Maintain 7000. Expect filed altitude 10 minutes after departure.

ALL AIRCRAFT: ATC crossing restrictions and climb gradients: if unable to accept crossing restrictions and climb rates advise ATC prior to taxi.

Rwys 35L/R, 36L/R: Cross 2 DME south of ORL VORTAC at or above 2300, cross ORL VORTAC R-115 at or above 2600, cross ORL VORTAC R-090 or R-270 at or above 3000. Rwy 35L/R: 566' per NM to 3000, Rwy 36L: 637' per NM to 3000, Rwy 36R: 621' per NM to 3000.

ORLANDO SIX DEPARTURE

(ORLA6.ORLA) 23FEB23

ORLANDO, FLORIDA
ORLANDO INTL (MCO)

SE-3, 07 AUG 2025 to 04 SEP 2025

SE-3, 07 AUG 2025 to 04 SEP 2025