

ILS or LOC RWY 36R

LOC/DME I-OJP 110.7 Chan 44	APP CRS 005°	Rwy Ldg 1601 TDZE 92 Apt Elev 96
---	------------------------	---

ILS or LOC RWY 36R
ORLANDO INTL (MCO)

	RADAR required for procedure entry.	DME or RADAR required.
--	-------------------------------------	------------------------

ALSF-2

MISSED APPROACH: Climb to 500 then climbing left turn to 3000 on heading 309° and ORL VORTAC R-248 to DNMOR/ORL 6 DME and hold, continue climb-in-hold to 3000.

T Simultaneous approach authorized.

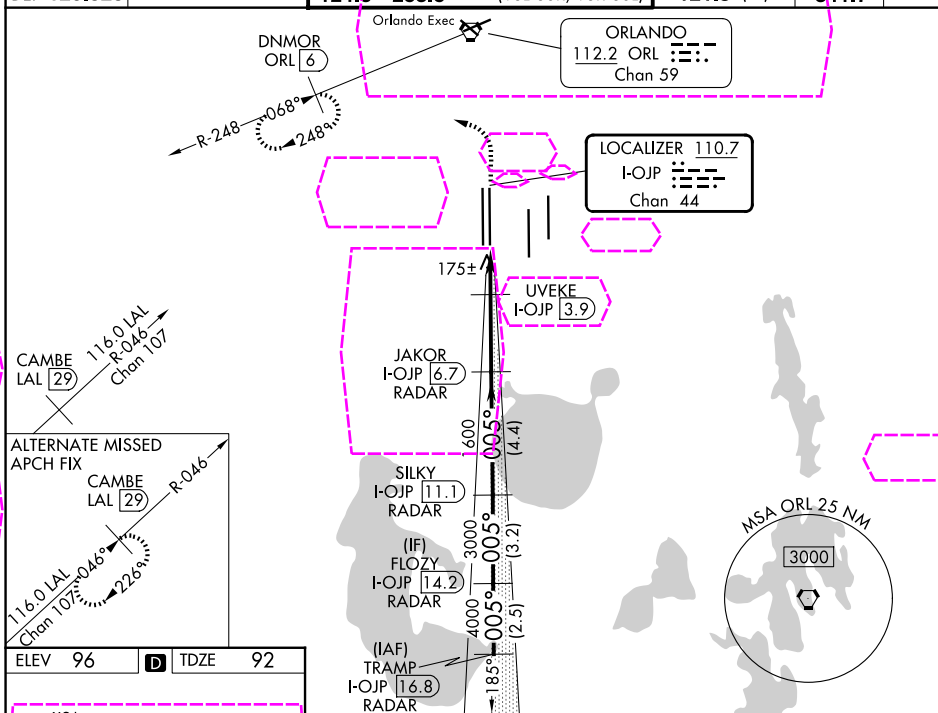
D-ATIS	
ARR	121.25
DEP	120.525

ORLANDO APP CON
124.8 307.0

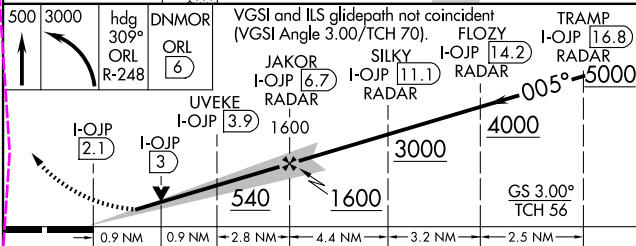
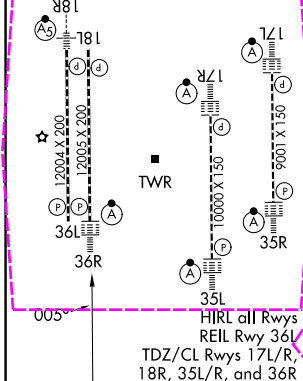
ORLANDO TOWER		
118.45	253.5	(17L-35R, 17R-35L)
124.3	253.5	(18L-36R, 18R-36L)

GND CON	CINC DEL
126.4 (E)	134.7
121.8 (W)	341.7

CPDLC	
-------	--



ELEV	96	D	TDZE	92
<div style="border: 1px dashed red; height: 20px; width: 100%;"></div>				



CATEGORY	A	B	C	D
S-ILS 36R	292/18 200 (200-½)			
S-LOC 36R	540/24	448 (500-½)	540/45	448 (500-¾)
CIRCLING	740-1	644 (700-1)	740-1¾ 644 (700-1¾)	740-2 644 (700-2)
	UYEKE FIX MINIMUMS (DME REQUIRED)			
S-LOC 36R	440/24	348 (400-½)	440/30	348 (400-¾)
CIRCLING	740-1	644 (700-1)	740-1¾ 644 (700-1¾)	740-2 644 (700-2)

FAF to MAP 4.6 NM					
Knots	60	90	120	150	180
Min:Sec	4:36	3:04	2:18	1:50	1:32

ORLANDO, FLORIDA
Amdt 11A 29DEC22

28°26'N-81°19'W

ORLANDO INTL (MCO)

ILS or LOC RWY 36R

SE-3, 07 AUG 2025 to 04 SEP 2025

SE-3, 07 AUG 2025 to 04 SEP 2025