

ORLANDO, FLORIDA

AL-571 (FAA)

24249

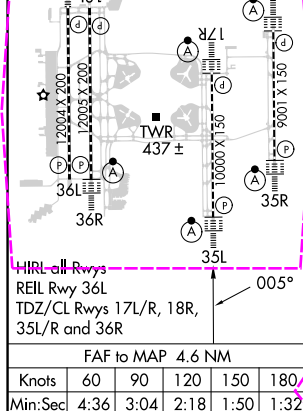
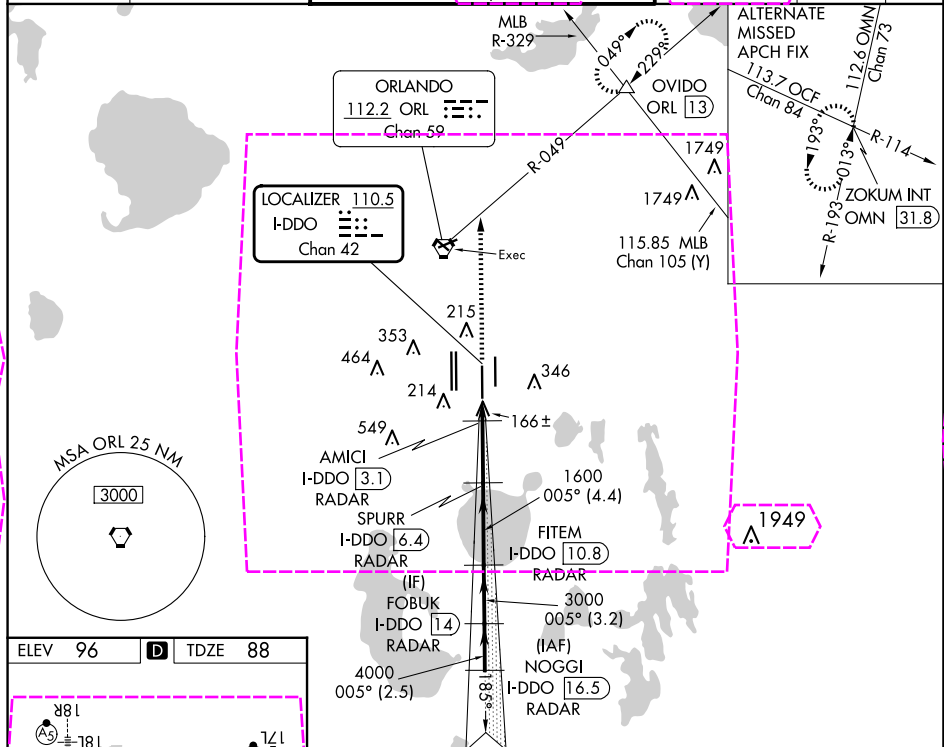
LOC/DME I-DDO 110.5 Chan 42	APP CRS 005°	Rwy Idg 10000 TDZE 88 Apt Elev 96
---	------------------------	--

ILS or LOC RWY 35L

ORLANDO INTL (MCO)

RADAR required for procedure entry. DME or RADAR required. Bright lights on highway midway between Rwy 35L and Rwy 35R may be mistaken for runway lights. Simultaneous approach authorized. When using alternate missed approach, simultaneous approach NA.		ALSF-2 A	MISSED APPROACH: Climb to 3000 on heading 005° and ORL VORTAC R-049 to OVIDO INT/ORL 13 DME and hold.
---	--	-------------	---

D-ATIS ARR 121.25 DEP 120.525	ORLANDO APP CON 124.8 307.0	ORLANDO TOWER 118.45 253.5 124.3 253.5 (Rwys 17L-35R, 17R-35L) (Rwys 18L-36R, 18R-36L)	GND CON 126.4 (East) 121.8 (West)	CLNC DEL 134.7 341.7	CPDLC
---	---------------------------------------	--	---	--	-------



ELEV 96 TDZE 88		3000		OVIDO		VGSI and ILS glidepath not coincident (VGSI Angle 3.00/TCH 72).		NOGCI	
hdg 005°		ORL R-049		FITEM I-DDO 10.8		FOBUK I-DDO 14		I-DDO 16.5	
I-DDO 1.8		AMICI I-DDO 3.1		SPURR I-DDO 6.4		I-DDO 10.8		5000	
1600		3000		4000		5000		GS 3.00°	
1.3 NM		3.3 NM		4.4 NM		3.2 NM		2.5 NM	
CATEGORY		A		B		C		D	
S-ILS 35L		288/18		200 (200-½)					
S-LOC 35L		420/24		332 (400-½)		420/26		332 (400-½)	
Knots		60		90		120		150	
Min:Sec		4:36		3:04		2:18		1:50	
FAF to MAP 4.6 NM		CIRCLING		740-1		644 (700-1)		740-1¾	
						644 (700-1¾)		740-2	
								644 (700-2)	

ORLANDO, FLORIDA

Amdt 8A 29DEC22

28°26'N-81°19'W

ORLANDO INTL (MCO)

ILS or LOC RWY 35L

ORLANDO, FLORIDA

AL-571 (FAA)

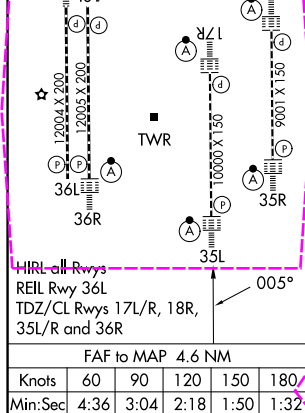
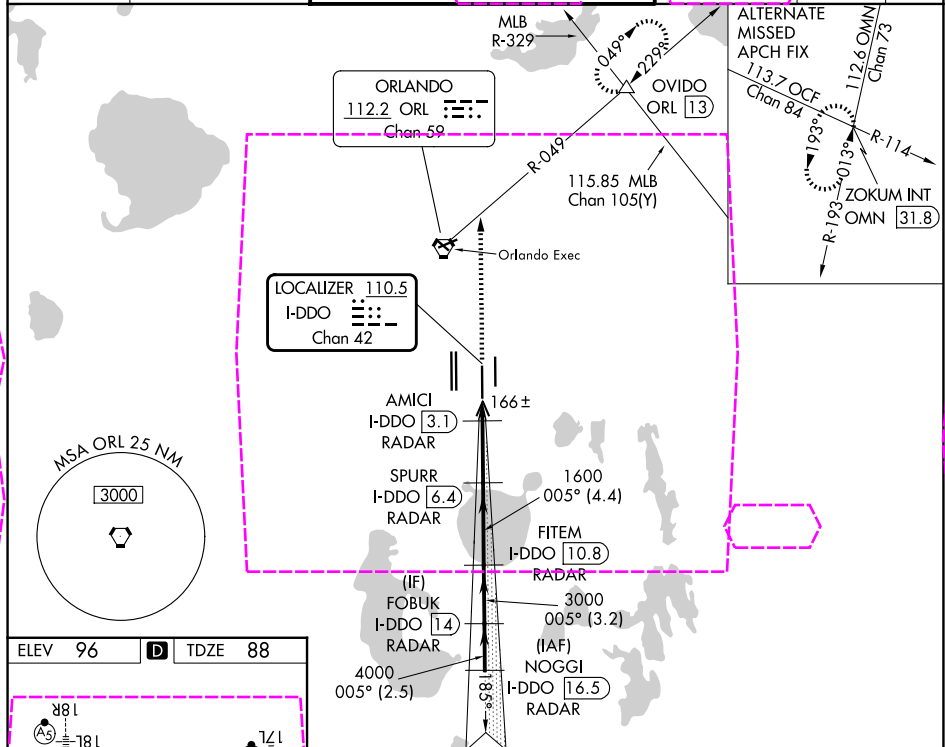
25219

LOC/DME I-DDO 110.5 Chan 42	APP CRS 005°	Rwy Ldg TDZE 88 Apt Elev 96
---	------------------------	---

ILS or LOC RWY 35L

ORLANDO INTL (MCO)

RADAR required for procedure entry. DME or RADAR required. Bright lights on highway midway between Rwy 35L and Rwy 35R may be mistaken for runway lights. Simultaneous approach authorized. When using alternate missed approach, simultaneous approach NA.			ALSF-2 	MISSED APPROACH: Climb to 3000 on heading 005° and ORL VORTAC R-049 to OVIDO INT/ORL 13 DME and hold.	
D-ATIS ARR 121.25 DEP 120.525	ORLANDO APP CON 124.8 307.0	ORLANDO TOWER 118.45 253.5 124.3 253.5 (17L-35R, 17R-35L) (18L-36R, 18R-36L)	GND CON 126.4 (E) 121.8 (W)	CLNC DEL 134.7 341.7	CPDLC



ELEV 96	TDZE 88	OVIDO		NOGCI	
3000	hdg 005°	ORL R-049	VGSI and ILS glidepath not coincident (VGSI Angle 3.00/TCH 72).	FOBUK I-DDO 16.5	NOGCI I-DDO 16.5
3000	1600	1600	3000	5000	5000
1.3 NM	3.3 NM	4.4 NM	3.2 NM	2.5 NM	
CATEGORY	A	B	C	D	
S-ILS 35L	288/18		200 (200-½)		
S-LOC 35L	420/24	332 (400-½)	420/26	332 (400-½)	
CIRCLING	740-1	644 (700-1)	740-1¾ 644 (700-1¾)	740-2 644 (700-2)	

ORLANDO, FLORIDA

Amdt 8A 29DEC22

28°26'N-81°19'W

ORLANDO INTL (MCO)

ILS or LOC RWY 35L