

ILS or LOC RWY 18R  
ORLANDO INTL (MCO)

LOC/DME I-TFE <b>111.9</b> Chan <b>56</b>	APP CRS <b>185°</b>	Rwy Idg <b>12004</b> TDZE <b>94</b> Apt Elev <b>96</b>
---	------------------------	--

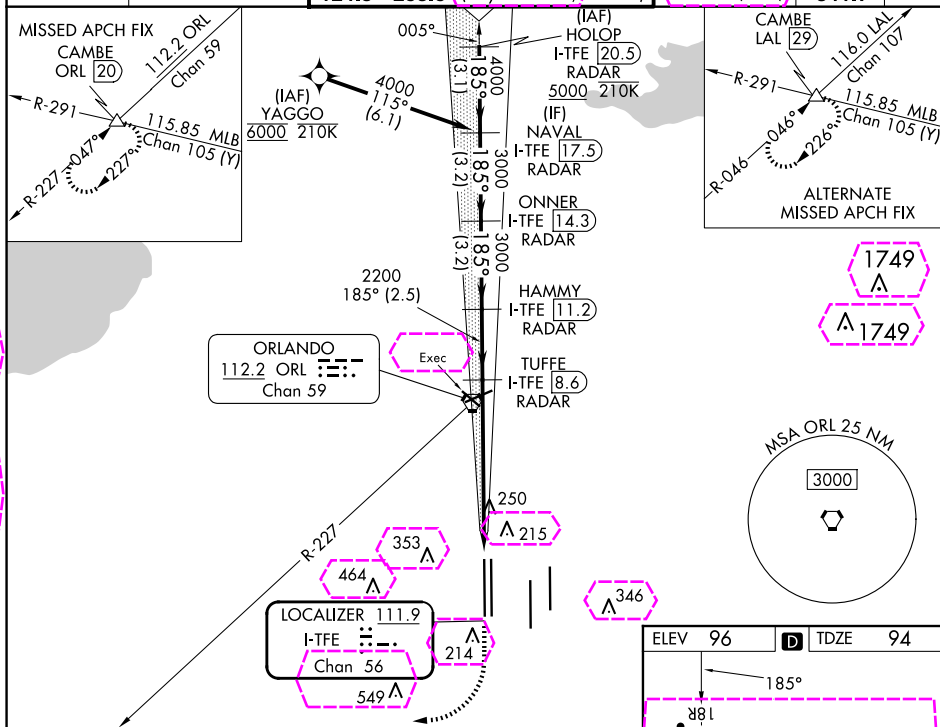
DME or RADAR required.  
RNP APCH-GPS. From YAGGO.

**T** Simultaneous approach authorized.

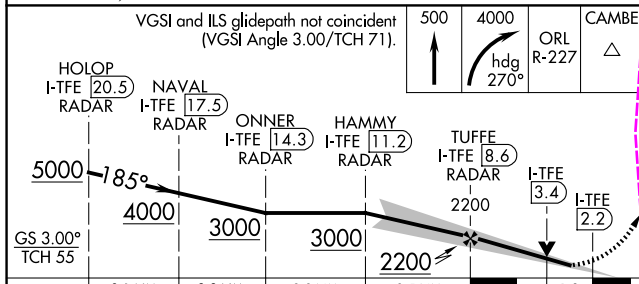
MALSR

**MISSED APPROACH:** Climb to 500 then climbing right turn to 4000 on heading 270° and on ORL VORTAC R-227 to CAMBE INT/ORL 20 DME and hold, continue climb-in-hold to 4000.

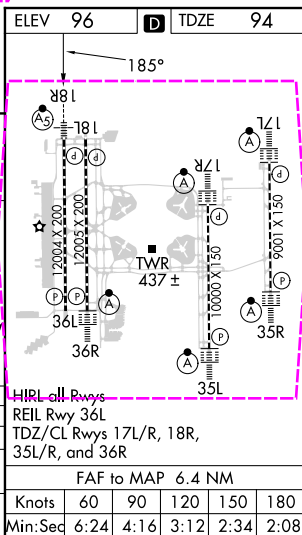
D-ATIS	ORLANDO APP CON	ORLANDO TOWER		GND CON	CLNC DEL	CPDLC
ARR <b>121.25</b>		<b>118.45</b>	<b>253.5</b> (Rwys 17L-35R, 17R-35L)	<b>126.4</b> (East)	<b>134.7</b>	
DEP <b>120.525</b>	<b>124.8 307.0</b>	<b>124.3</b>	<b>253.5</b> (Rwys 18L-36R, 18R-36L)	<b>121.8</b> (West)	<b>341.7</b>	



VGSI and ILS glidepath not coincident  
(VGSI Angle 3.00/TCH 71).



	3.1 NM	3.2 NM	3.2 NM	2.5 NM	5.2 NM	1.2
CATEGORY	A		B	C	D	
S-ILS 18R	294/18 200 (200-½)					
S-LOC 18R	540/24	446 (500-½)		540/45	446 (500-¾)	
<b>C</b> CIRCLING	740-1	644 (700-1)		740-1 <sup>3/4</sup> 644 (700-1 <sup>3/4</sup> )	740-2 644 (700-2)	



ILS or LOC RWY 18R  
ORLANDO INTL (MCO)

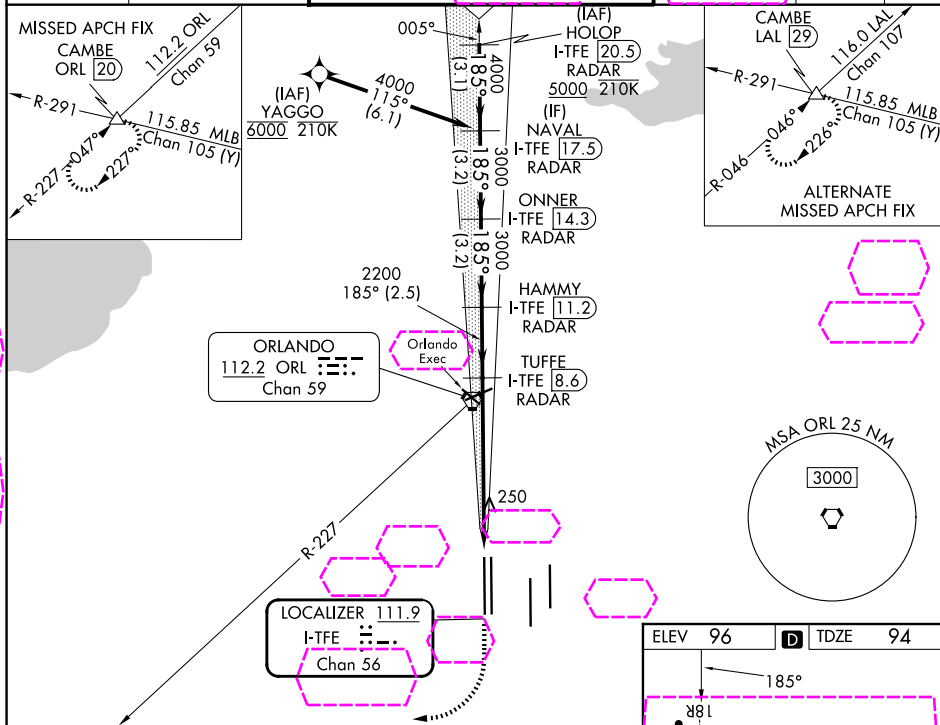
LOC/DME I-TFE <b>111.9</b> Chan <b>56</b>	APP CRS <b>185°</b>	Rwy Ldg <b>12004</b> TDZE <b>94</b> Apt Elev <b>96</b>
---	------------------------	--



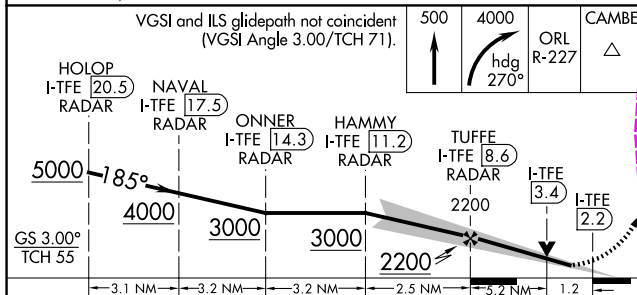
**MISSED APPROACH:** Climb to 500 then climbing right turn to 4000 on heading 270° and on ORL VORTAC R-227 to CAMBE INT/ORL 20 DME and hold, continue climb-in-hold to 4000.

Simultaneous approach authorized.

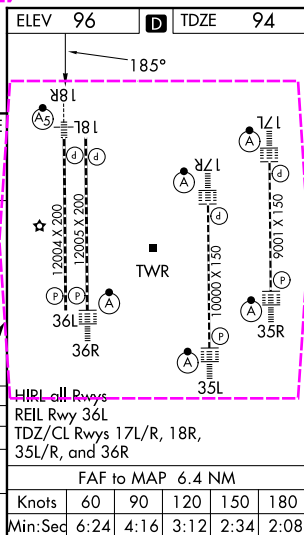
D-ATIS		ORLANDO APP CON		ORLANDO TOWER		GND CON		CLNC DEL		CPDLC
ARR	<b>121.25</b>			<b>118.45</b>	<b>253.5</b>	(17L-35R, 17R-35L)	<b>126.4</b> (E)	<b>134.7</b>		
DEP	<b>120.525</b>	<b>124.8</b>	<b>307.0</b>	<b>124.3</b>	<b>253.5</b>	(18L-36R, 18R-36L)	<b>121.8</b> (W)	<b>341.7</b>		



VGSI and ILS glidepath not coincident  
(VGSI Angle 3.00/TCH 71).



CATEGORY	A	B	C	D
S-ILS 18R	294/18		200 (200-1/2)	
S-LOC 18R	540/24	446 (500-1/2)	540/45	446 (500-7/8)
CIRCLING	740-1	644 (700-1)	740-1 <sup>3</sup> / <sub>4</sub> 644 (700-1 <sup>3</sup> / <sub>4</sub> )	740-2 644 (700-2)



ORLANDO, FLORIDA  
Amdt 11A 07OCT21

28°26'N-81°19'W

ORLANDO INTL (MCO)

## ILS or LOC RWY 18R

SE-3, 07 AUG 2025 to 04 SEP 2025

SE-3, 07 AUG 2025 to 04 SEP 2025