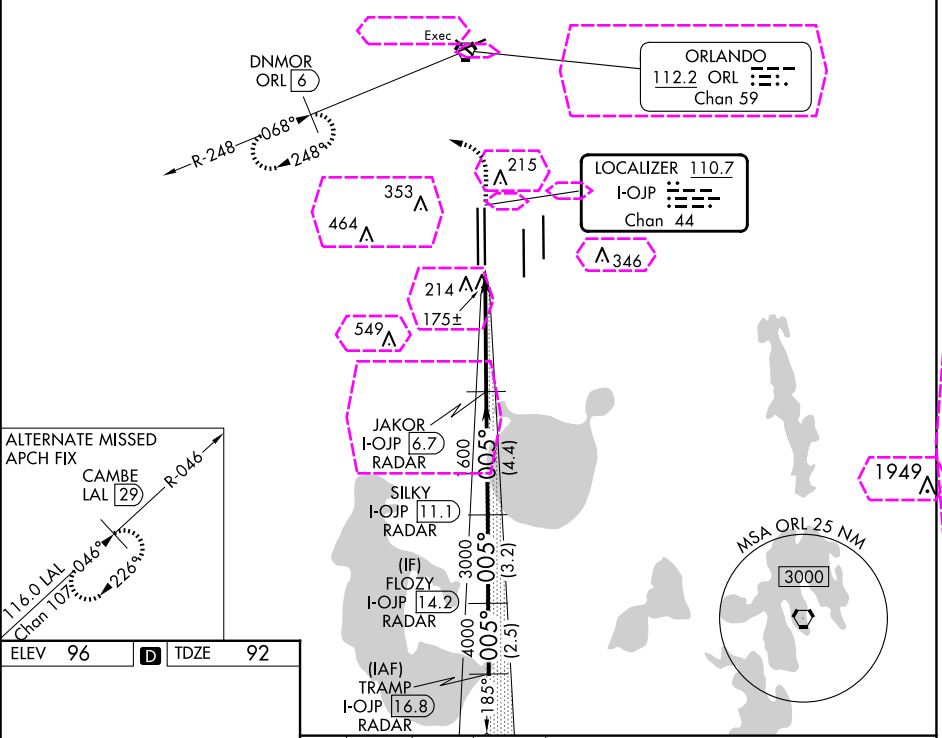
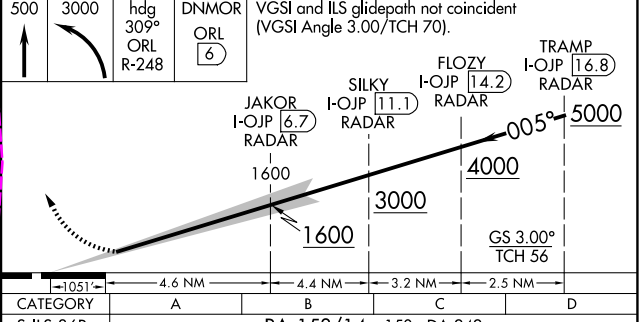
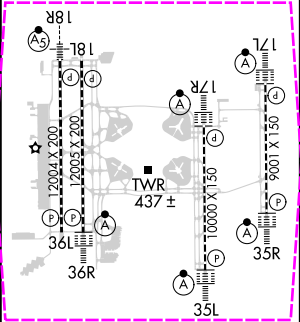


LOC/DME I-OJP	APP CRS	Rwy Idg	11601
110.7	005°	TDZE	92
Chan 44		Apt Elev	96

RADAR required for procedure entry. DME or RADAR required.		ALSIF-2		MISSED APPROACH: Climb to 500 then climbing left turn to 3000 on heading 309° and ORL R-248 to DNMR/ORL 6 DME and hold, continue climb-in-hold to 3000.	
Simultaneous approach authorized. Requires specific OPSPEC, MSPEC or LOA approval.					
D-ATIS	ORLANDO APP CON	ORLANDO TOWER		GND CON	CLNC DEL
ARR 121.25	124.8 307.0	118.45 253.5 (Rwys 17L-35R, 17R-35L)		126.4 (East)	134.7
DEP 120.525		124.3 253.5 (Rwys 18L-36R, 18R-36L)		121.8 (West)	341.7
				CPDLC	



ELEV 96	D	TDZE 92
---------	---	---------



HIRL all Rwys
REIL Rwy 36L
TDZ/CL Rwys 17L/R,
18R, 35L/R, and 36R

SA CATEGORY I ILS - SPECIAL AIRCREW
& AIRCRAFT CERTIFICATION REQUIRED

ORLANDO, FLORIDA

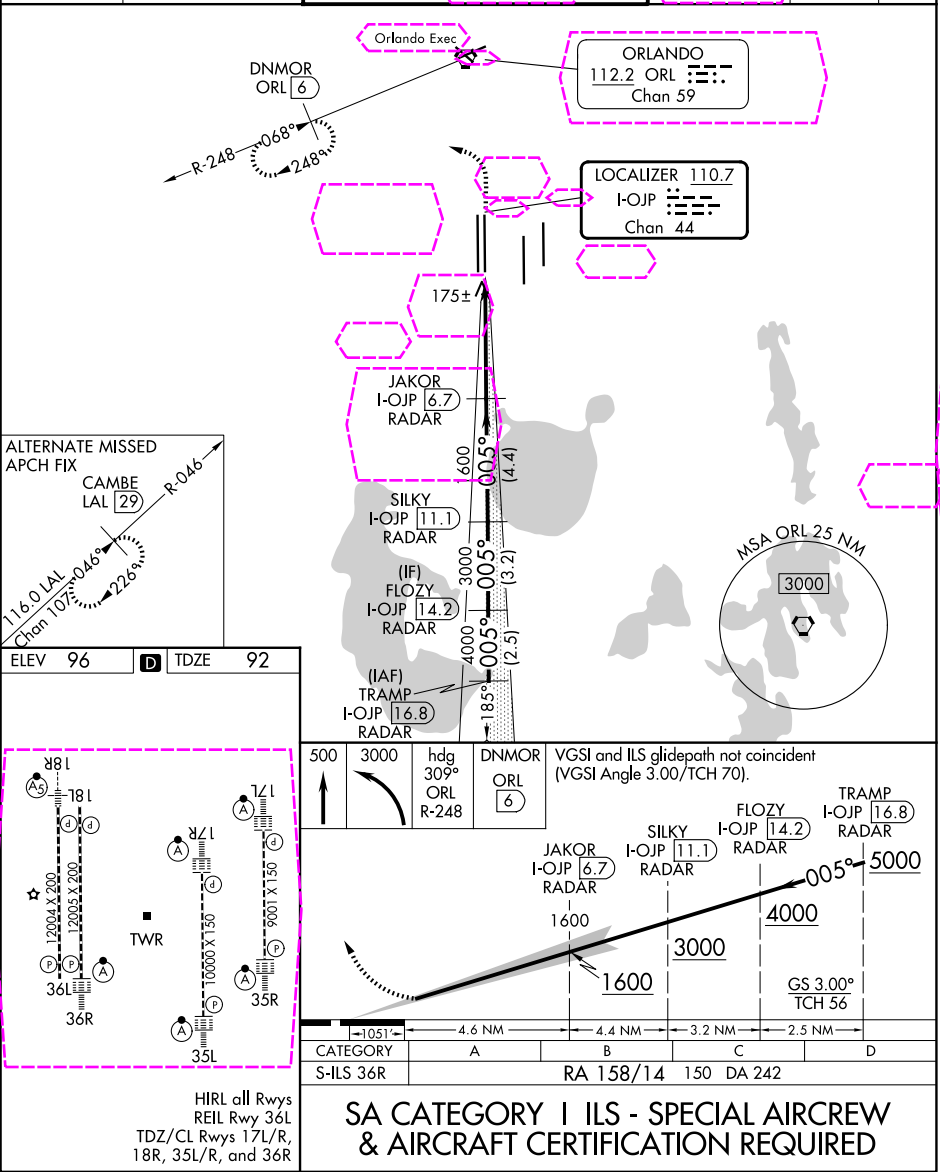
AL-571 (FAA)

25219

LOC/DME I-OJP	APP CRS	Rwy Ldg
110.7	005°	11601
Chan 44		TDZE 92
		Apt Elev 96

ILS RWY 36R (SA CAT I)
ORLANDO INTL (MCO)

RADAR required for procedure entry. DME or RADAR required.		ALSIF-2	MISSED APPROACH: Climb to 500 then climbing left turn to 3000 on heading 309° and ORL R-248 to DNMOR/ORL 6 DME and hold, continue climb-in-hold to 3000.	
Simultaneous approach authorized. Requires specific OPSPEC, MSPEC or LOA approval.				
D-ATIS	ORLANDO APP CON	ORLANDO TOWER	GND CON	CLNC DEL
ARR 121.25	124.8 307.0	118.45 253.5 124.3 253.5	126.4 (E) 121.8 (W)	134.7
DEP 120.525		(17L-35R, 17R-35L) (18L-36R, 18R-36L)		CPDLC



SE-3, 07 AUG 2025 to 04 SEP 2025

SE-3, 07 AUG 2025 to 04 SEP 2025

ORLANDO, FLORIDA
Amdt 11A 29DEC22

28°26'N-81°19'W

ORLANDO INTL (MCO)
ILS RWY 36R (SA CAT I)