

LOC/DME I-OJP 110.7 Chan 44	APP CRS 005°	Rwy Idg 11601 TDZE 92 Apt Elev 96
---	------------------------	--

ILS RWY 36R (CAT II & III)
ORLANDO INTL (MCO)

	RADAR required for procedure entry.	DME or RADAR required.
--	-------------------------------------	------------------------

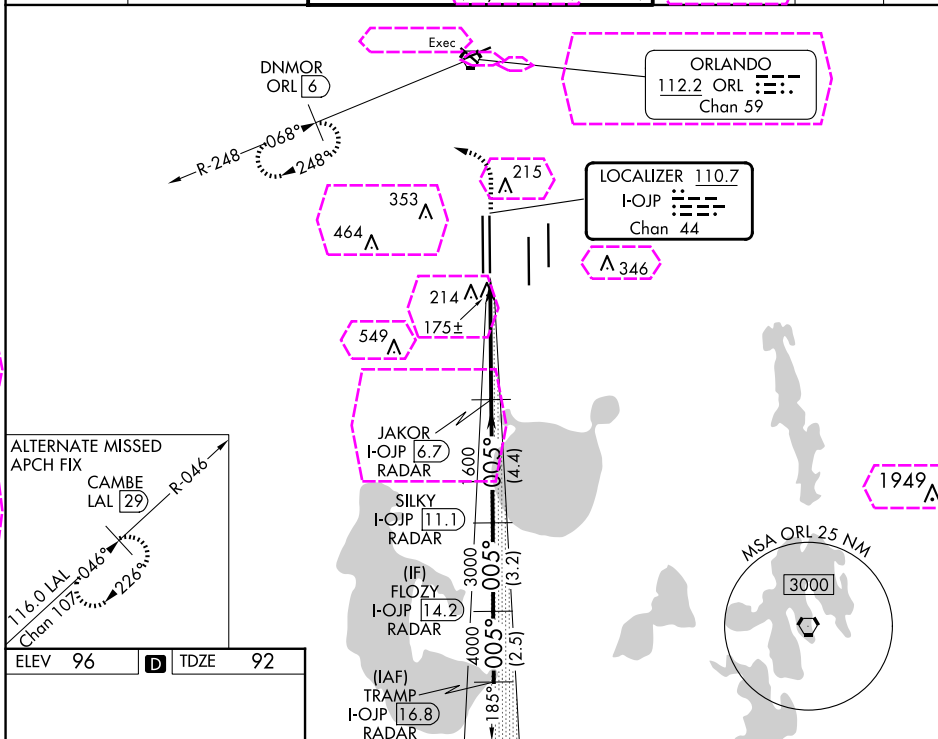
ALSF-2

MISSED APPROACH: Climb to 500 then climbing left turn to 3000 on heading 309° and ORL R-248 to DNMOR/ORL 6 DME and hold, continue climb-in-hold to 3000.

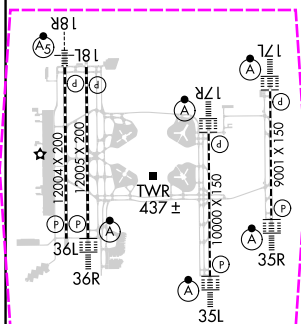


T Simultaneous approach authorized.

D-ATIS	ORLANDO APP CON	ORLANDO TOWER		GND CON	CLNC DEL	CPDLC
ARR	121.25	118.45	253.5 (Rwys 17L-35R, 17R-35L)	126.4 (East)	134.7	
DEP	120.55	124.3	253.5 (Rwys 18L-36R, 18R-36L)	121.8 (West)	341.7	



ELEV	96	D	TDZE	92
------	----	----------	------	----



HIRL all Rwys
REIL Rwy 36L
TDZ/CL Rwys 17L/R, 18R,
35L/R, and 36R

500 ↑	3000 ↘	hdg 309° ORL R-248	DNMOR ORL 6	VGSI and ILS glidepath not coincident (VGSI Angle 3.00/TCH 70).				FLOZY I-OJP 14.2 RADAR	TRAMP I-OJP 16.8 RADAR
				JAKOR I-OJP 6.7 RADAR	SILKY I-OJP 11.1 RADAR	185°		5000	
				1600	3000	4000	GS 3.00° TCH 56		
				1600					
				1051'	4.6 NM	4.4 NM	3.2 NM	2.5 NM	
CATEGORY	A B C D								
S-ILS 36R	CAT II RA 106/12 100 DA 192								
S-ILS 36R	CAT III RVR 06								

CATEGORY II & III ILS - SPECIAL AIRCREW
& AIRCRAFT CERTIFICATION REQUIRED

ORLANDO, FLORIDA

AL-571 (FAA)

25219

LOC/DME I-OJP 110.7 Chan 44	APP CRS 005°	Rwy Ldg 11601 TDZE 92 Apt Elev 96
---	------------------------	--

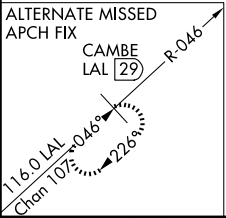
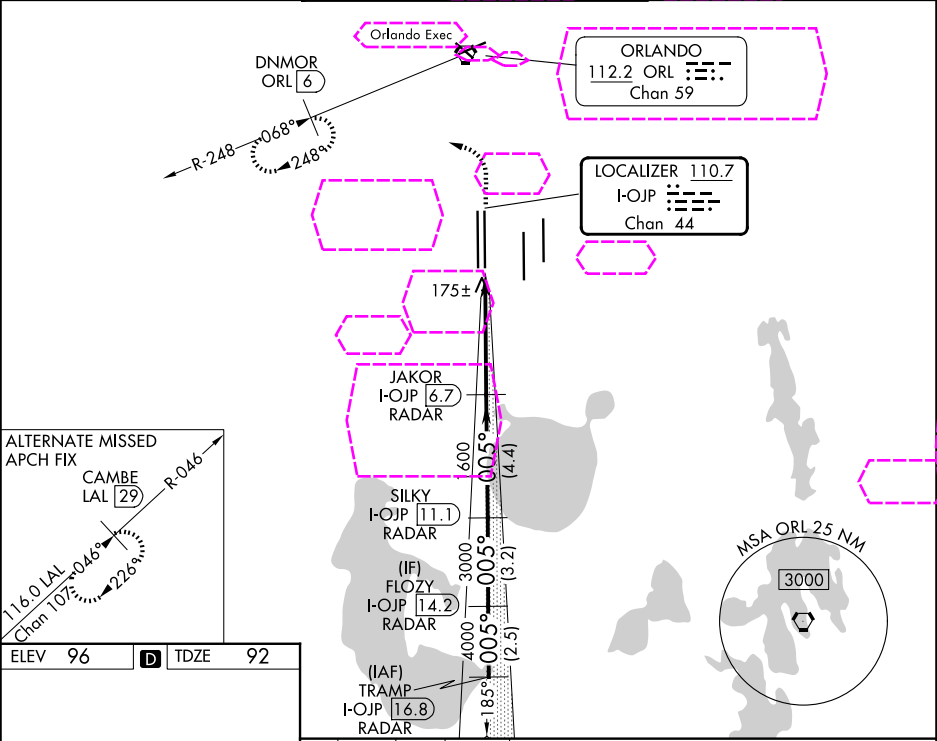
ILS RWY 36R (CAT II & III)
ORLANDO INTL (MCO)

RADAR required for procedure entry. DME or RADAR required.

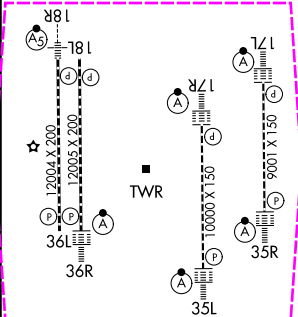
Simultaneous approach authorized.

ALSF-2
MISSED APPROACH: Climb to 500 then climbing left turn to 3000 on heading 309° and ORL R-248 to DNMOR/ORL 6 DME and hold, continue climb-in-hold to 3000.

D-ATIS ARR 121.25 DEP 120.525	ORLANDO APP CON 124.8 307.0	ORLANDO TOWER 118.45 253.5 124.3 253.5 (17L-35R, 17R-35L) (18L-36R, 18R-36L)	GND CON 126.4 (E) 121.8 (W)	CLNC DEL 134.7 341.7	CPDLC
---	---------------------------------------	--	---	--	-------



ELEV 96	D	TDZE 92
---------	---	---------



500	3000	hdg 309° ORL R-248	DNMOR ORL 6	VGSI and ILS glidepath not coincident (VGSI Angle 3.00/TCH 70).	FLOZY I-OJP 14.2 RADAR	TRAMP I-OJP 16.8 RADAR
JAKOR I-OJP 6.7 RADAR	SILKY I-OJP 11.1 RADAR	1600	3000	4000	185°	5000
1051	4.6 NM	4.4 NM	3.2 NM	2.5 NM		
CATEGORY	A	B	C	D		
S-ILS 36R	CAT II RA106/12 100 DA 192					
S-ILS 36R	CAT III RVR 06					

HIRL all Rws
REIL Rwy 36L
TDZ/CL Rws 17L/R, 18R,
35L/R, and 36R

CATEGORY II & III ILS - SPECIAL AIRCREW
& AIRCRAFT CERTIFICATION REQUIRED

ORLANDO, FLORIDA
Amdt 11A 29DEC22

28°26'N-81°19'W

ORLANDO INTL (MCO)
ILS RWY 36R (CAT II & III)

SE-3, 07 AUG 2025 to 04 SEP 2025

SE-3, 07 AUG 2025 to 04 SEP 2025