

ORLANDO, FLORIDA

AL-571 (FAA)

24249

LOC/DME I-CER <b>111.15</b> Chan <b>48</b> (Y)	APP CRS <b>005°</b>	Rwy Idg TDZE <b>90</b> Apt Elev <b>96</b>
--	------------------------	---

# ILS RWY 35R (SA CAT I)

ORLANDO INTL (MCO)

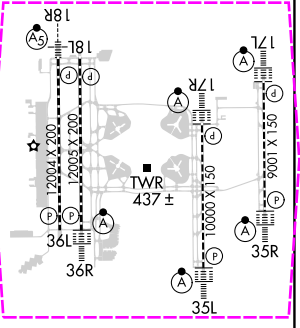
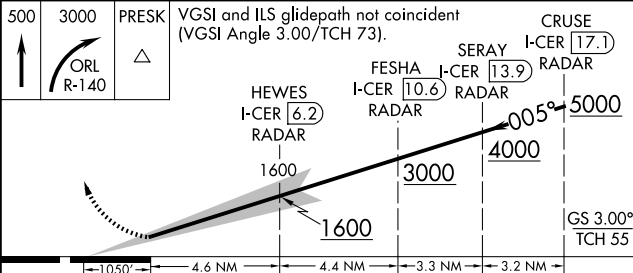
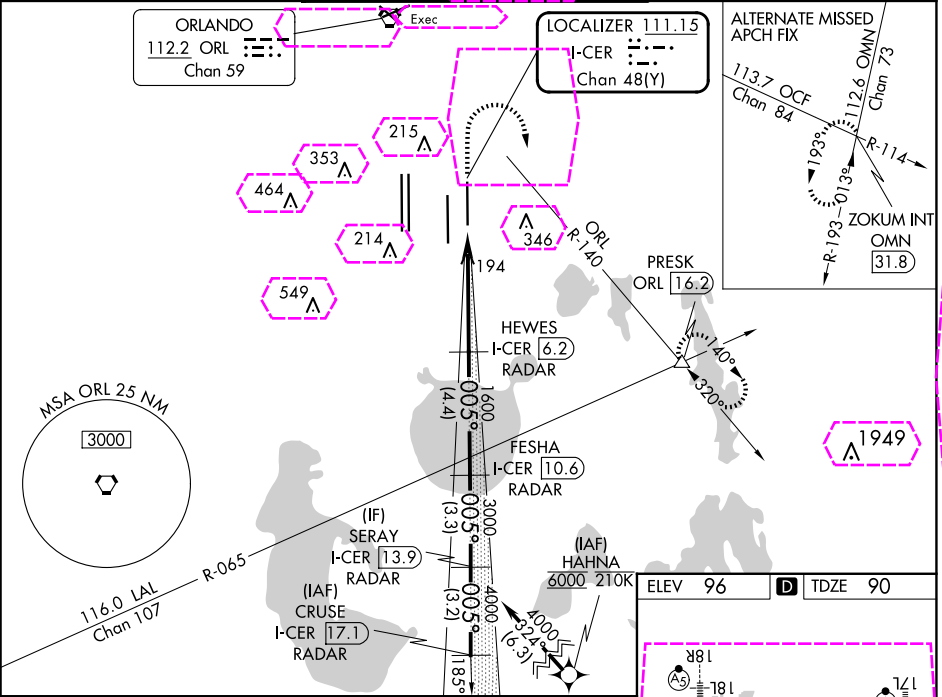
From HAHNA: RNAV1- DME/DME/IRU or GPS required. Aircraft not DME/DME/IRU or GPS equipped-RADAR required for procedure entry.

Simultaneous approach authorized. Requires specific OPSPEC, MSPEC, or LOA approval. Bright lights on highway midway between Rwy 35L and Rwy 35R may be mistaken for runway lights. When using alternate missed approach, simultaneous approach NA.



MISSED APPROACH: Climb to 500 then climbing right turn to 3000 on ORL VORTAC R-140 to PRESK INT/ ORL 16.2 DME and hold, continue climb-in-hold to 3000.

D-ATIS ARR <b>121.25</b> DEP <b>120.525</b>	ORLANDO APP CON <b>124.8 307.0</b>	ORLANDO TOWER <b>118.45 253.5</b> (Rwys 17L-35R, 17R-35L) <b>124.3 253.5</b> (Rwys 18L-36R, 18R-36L)	GND CON <b>126.4</b> (East) <b>121.8</b> (West)	CLNC DEL <b>134.7</b> <b>341.7</b>	CPDLC
---	---------------------------------------	--	---	--	-------



CATEGORY	A	B	C	D
S-ILS 35R	RA 157/14 150 DA 240			

**SA CATEGORY I ILS - SPECIAL AIRCREW & AIRCRAFT CERTIFICATION REQUIRED**

HIRL all Rwys  
REIL Rwy 36L  
TDZ/CL Rwys 17L/R, 18R, 35L/R and 36R

SE-3, 10 JUL 2025 to 07 AUG 2025

SE-3, 10 JUL 2025 to 07 AUG 2025

25219

LOC/DME I-CER <b><u>111.15</u></b> Chan <b>48</b> (Y)	APP CRS <b>005°</b>	Rwy Ldg <b>9000</b> TDZE <b>90</b> Apt Elev <b>96</b>
---	------------------------	---

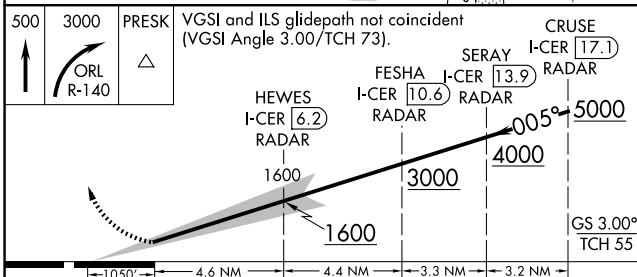
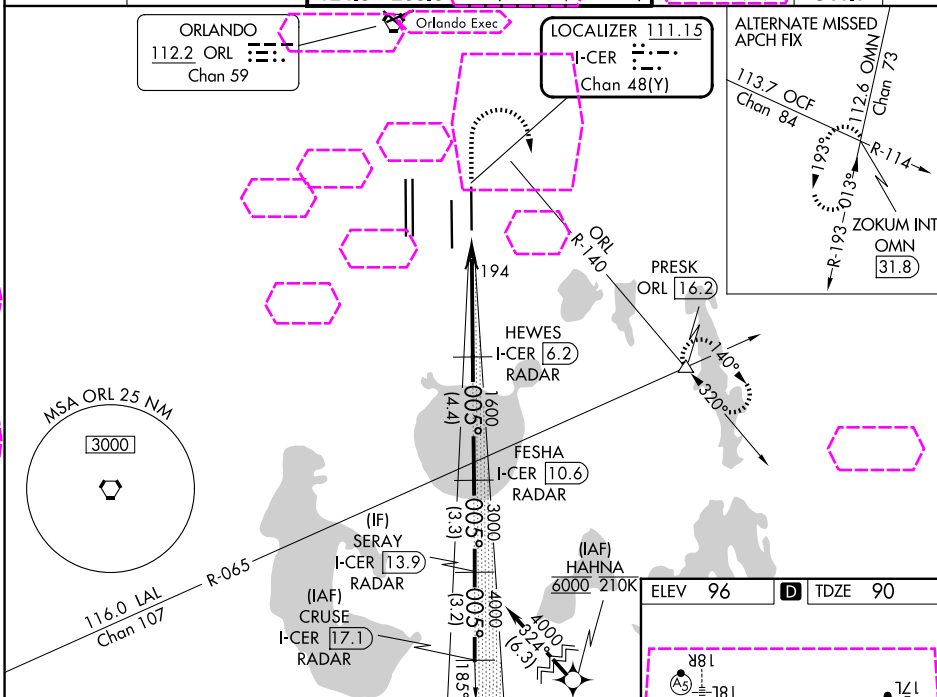
ILS RWY 35R (SA CAT I)  
ORLANDO INTL (MCO)

From HAHNA: RNAV1- DME/DME/IRU or GPS required. Aircraft not DME/DME/IRU or GPS equipped-RADAR required for procedure entry.



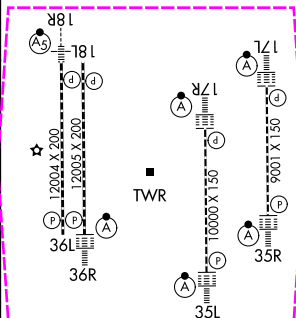
**MISSED APPROACH:** Climb to 500 then climbing right turn to 3000 on ORL VORTAC R-140 to PRESK INT/ ORL 16.2 DME and hold, continue climb-in-hold to 3000.

D-ATIS			ORLANDO TOWER		GND CON	CLNC DEL		
ARR	121.25	ORLANDO APP CON	118.45	253.5	(17L-35R, 17R-35L)	126.4 (E)	134.7	CPDLC
DEP	120.525	124.8 307.0	124.3	253.5	(18L-36R, 18R-36L)	121.8 (W)	341.7	



CATEGORY	A	B	C	D
S-ILS 35R	RA 157/14 150 DA 240			

SA CATEGORY I ILS - SPECIAL AIRCREW  
& AIRCRAFT CERTIFICATION REQUIRED



HIRL all Rwy's  
REIL Rwy 36L  
TDZ/CL Rwy's 17L/R, 18R,  
35L/R and 36R