

LOC/DME I-CER <u>111.15</u> Chan 48 (Y)	APP CRS 005°	Rwy Idg 9001 TDZE 90 Apt Elev 96
---	------------------------	---

ILS RWY 35R (CAT II & III)
ORLANDO INTL (MCO)

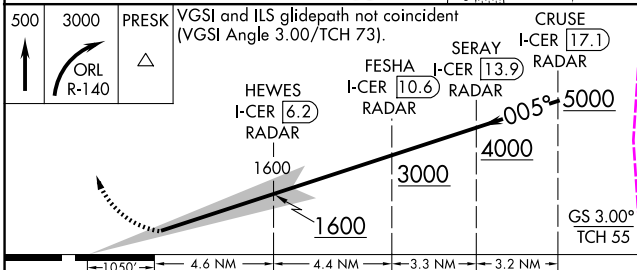
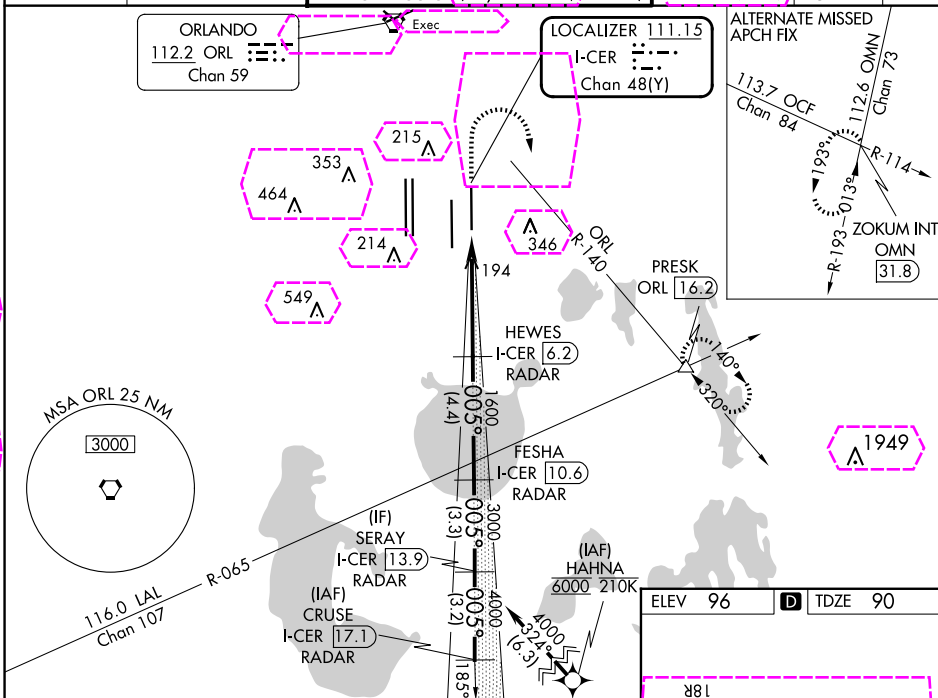
From HAHNA: RNAV 1-DME/DME/IRU or GPS required. Aircraft not DME/DME/IRU or GPS equipped-RADAR required for procedure entry.

ALSF-2

MISSED APPROACH: Climb to 500 then climbing right turn to 3000 on ORL VORTAC R-140 to PRESK INT/ ORL 16.2 DME and hold, continue climb-in-hold to 3000.

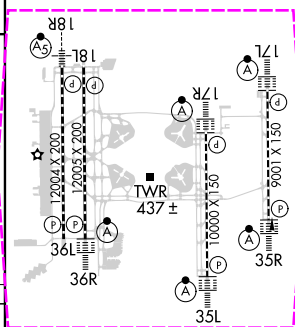
T Simultaneous approach authorized. Bright lights on highway midway between Rwy 35L and Rwy 35R may be mistaken for runway lights. When using alternate missed approach, simultaneous approach NA.

D-ATIS	ORLANDO APP CON	ORLANDO TOWER		GND CON	CLNC DEL	CPDLC
ARR 121.25		118.45	253.5 (Rwys 17L-35R, 17R-35L)	126.4 (East)	134.7	
DEP 120.525	124.8 307.0	124.3	253.5 (Rwys 18L-36R, 18R-36L)	121.8 (West)	341.7	



CATEGORY	A	B	C	D
S-ILS 35R	CAT II RA 101/12 100 DA 190			
S-ILS 35R	CAT III RVR 06			

CATEGORY II & III ILS - SPECIAL AIRCREW
& AIRCRAFT CERTIFICATION REQUIRED



HIRL all Rwy's
REIL Rwy 36L
TDZ/CL Rwy's 17L/R, 18R,
35L/R and 36R

SE-3, 10 JUL 2025 to 07 AUG 2025

SE-3, 10 JUL 2025 to 07 AUG 2025

LOC/DME I-CER <u>111.15</u> Chan 48 (Y)	APP CRS 005°	Rwy Ldg 9001 TDZE 90 Apt Elev 96
---	------------------------	---

ILS RWY 35R (CAT II & III)
ORLANDO INTL (MCO)


From HAHNA: RNAV 1-DME/DME/IRU or GPS required. Aircraft not DME/DME/IRU or GPS equipped-RADAR required for procedure entry.

ALSF-2

MISSED APPROACH: Climb to 500 then climbing right turn to 3000 on ORL VORTAC R-140 to PRESK INT/ ORL 16.2 DME and hold, continue climb-in-hold to 3000.

T Simultaneous approach authorized. Bright lights on highway midway between Rwy 35L and Rwy 35R may be mistaken for runway lights. When using alternate missed approach, simultaneous approach NA.

D-ATIS		ORLANDO APP CON		ORLANDO TOWER		GND CON		CLNC DEL		CPDLC
ARR	121.25			118.45	253.5	(17L-35R, 17R-35L)	126.4	(E)	134.7	
DEP	120.525	124.8	307.0	124.3	253.5	(18L-36R, 18R-36L)	121.8	(W)	341.7	

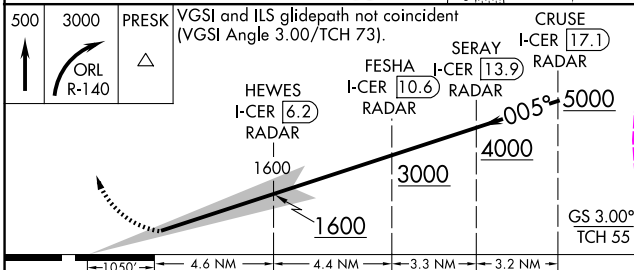
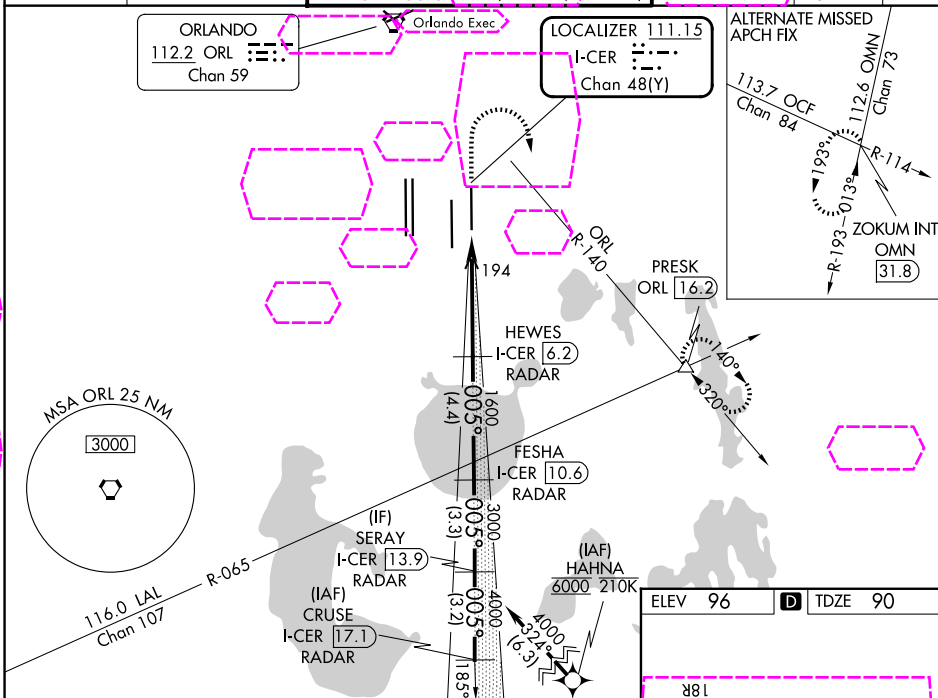
ORLANDO
112.2 ORL 
Chan 59

Orlando Exec

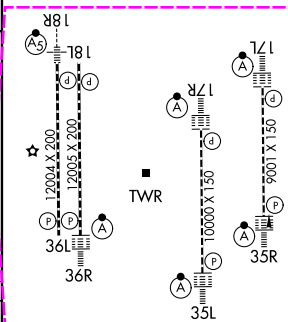
LOCALIZER 111.15
I-CER
Chan 48(Y)

ALTERNATE MISSED APCH FIX	
------------------------------	--

SE-3, 07 AUG 2025 to 04 SEP 2025



ELEV	96	D	TDZE	90
------	----	----------	------	----



CATEGORY	A	B	C	D
S-ILS 35R	CAT II RA 101/12 100 DA 190			
S-ILS 35R	CAT III RVR 06			

HIRL all Rwy's
REIL Rwy 36L
TDZ/CL Rwy's 17L/R, 18R,
35L/R and 36R

CATEGORY II & III ILS - SPECIAL AIRCREW
& AIRCRAFT CERTIFICATION REQUIRED

ORLANDO, FLORIDA
Amdt 5B 29DEC22

28°26'N-81°19'W

ORLANDO INTL (MCO)
ILS RWY 35R (CAT II & III)