

ILS RWY 35L (SA CAT I)

ORLANDO, FLORIDA

AL-571 (FAA)

25219

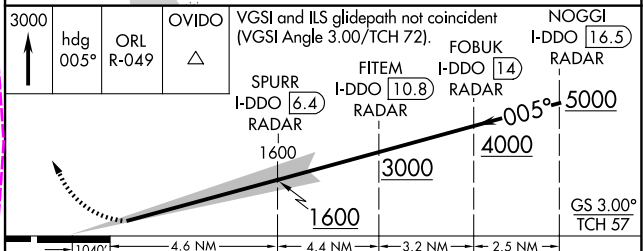
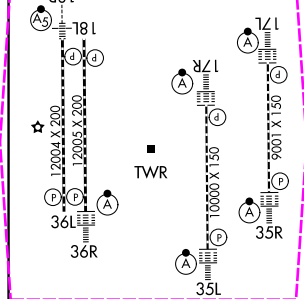
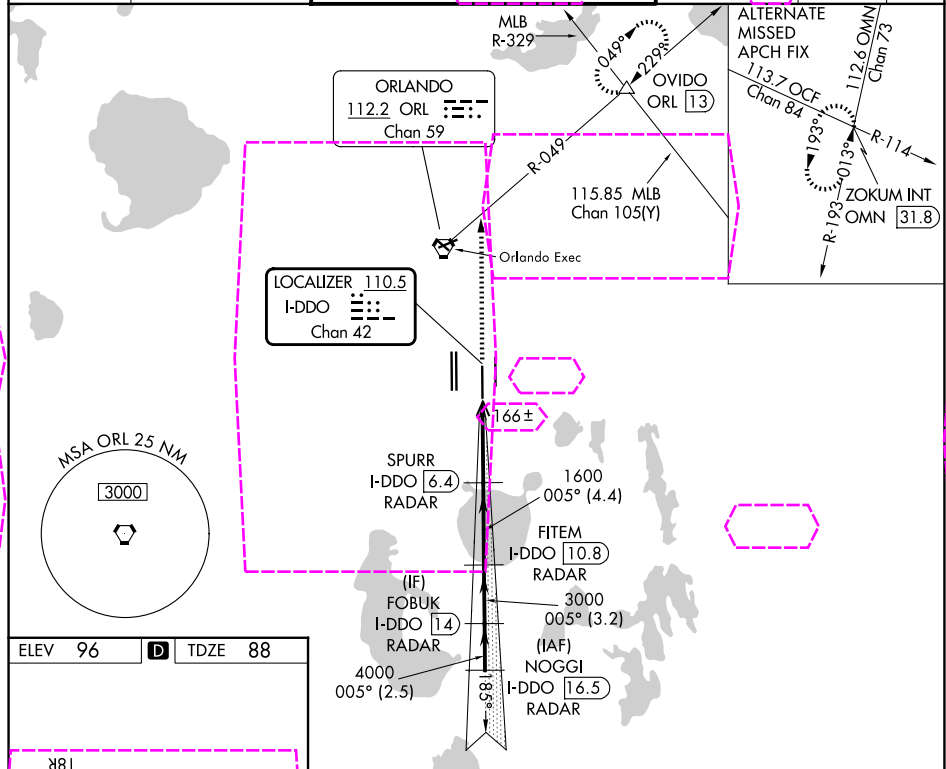
LOC/DME I-DDO <b>110.5</b> Chan <b>42</b>	APP CRS <b>005°</b>	Rwy Ldg TDZE <b>88</b> Apt Elev <b>96</b>
---	------------------------	---

# ILS RWY 35L (SA CAT I)

## ORLANDO INTL (MCO)

RADAR required for procedure entry: DME or RADAR required.		ALSIF-2 	MISSED APPROACH: Climb to 3000 on heading 005° and ORL VORTAC R-049 to OVIDO INT/ORL 13 DME and hold.
Requires specific OPSPEC, MSPEC or LOA approval. Simultaneous approach authorized. Bright lights on highway midway between Rwy 35L and Rwy 35R may be mistaken for runway lights. When using alternate missed approach, simultaneous approach NA.			

D-ATIS ARR <b>121.25</b> DEP <b>120.525</b>	ORLANDO APP CON <b>124.8 307.0</b>	ORLANDO TOWER <b>118.45 253.5</b> <b>124.3 253.5</b> (17L-35R, 17R-35L) (18L-36R, 18R-36L)	GND CON <b>126.4 (E)</b> <b>121.8 (W)</b>	CLNC DEL <b>134.7</b> <b>341.7</b>	CPDLC
---	---------------------------------------	--	---	--	-------



CATEGORY	A	B	C	D
S-ILS 35R	RA 164/14 150 DA 238			
SA CATEGORY I ILS - SPECIAL AIRCREW & AIRCRAFT CERTIFICATION REQUIRED				

ORLANDO, FLORIDA  
Amdt 8A 29DEC22

28°26'N-81°19'W

ORLANDO INTL (MCO)  
ILS RWY 35L (SA CAT I)

SE-3, 07 AUG 2025 to 04 SEP 2025

SE-3, 07 AUG 2025 to 04 SEP 2025