

ORLANDO, FLORIDA

AL-571 (FAA)

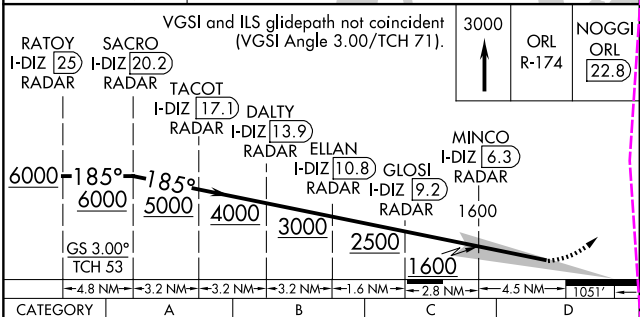
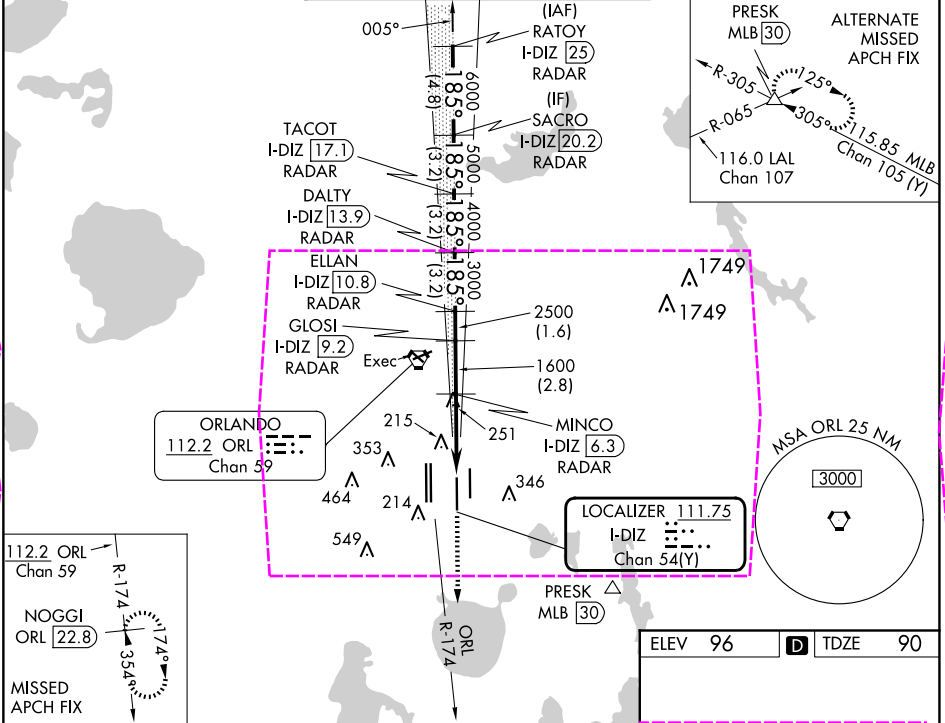
24249

LOC/DME I-DIZ 111.75 Chan 54 (Y)	APP CRS 185°	Rwy Idg 10000 TDZE 90 Apt Elev 96
--	------------------------	--

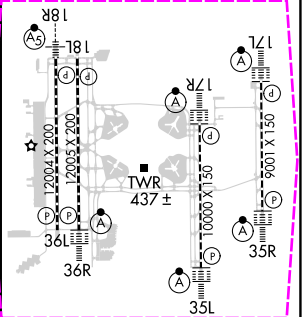
ILS RWY 17R (CAT II)
ORLANDO INTL (MCO)

RADAR required for procedure entry. DME or RADAR required.		ALS F-2 A	MISSED APPROACH: Climb to 3000 on ORL VORTAC R-174 to NOGGI/ ORL 22.8 DME and hold.
Simultaneous approach authorized. When using alternate missed approach, simultaneous approach NA. Bright lights on highway midway between Rwy 17L and Rwy 17R may be mistaken for runway lights.			

D-ATIS ARR 121.25 DEP 120.525	ORLANDO APP CON 124.8 307.0	ORLANDO TOWER 118.45 253.5 (Rwys 17L-35R, 17R-35L) 124.3 253.5 (Rwys 18L-36R, 18R-36L)	GND CON 126.4 (East) 121.8 (West)	CLNC DEL 134.7 341.7	CPDLC
---	---------------------------------------	--	---	--	-------



ELEV 96	D	TDZE 90
---------	---	---------



CATEGORY II ILS - SPECIAL AIRCREW & AIRCRAFT CERTIFICATION REQUIRED

HIRL all Rwys
REIL Rwy 36L
TDZ/CL Rwys 17L/R, 18R, 35L/R and 36R

ORLANDO, FLORIDA
Amdt 5F 29DEC22

28°26'N-81°19'W

ORLANDO INTL (MCO)
ILS RWY 17R (CAT II)

ORLANDO, FLORIDA

AL-571 (FAA)

25219

LOC/DME I-DIZ 111.75 Chan 54 (Y)	APP CRS 185°	Rwy Ldg 10000 TDZE 90 Apt Elev 96
--	------------------------	---

ILS RWY 17R (CAT II)

ORLANDO INTL (MCO)

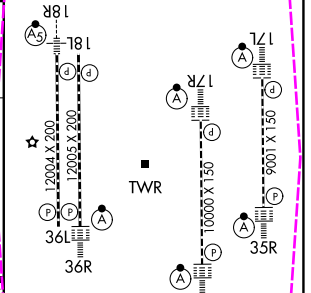
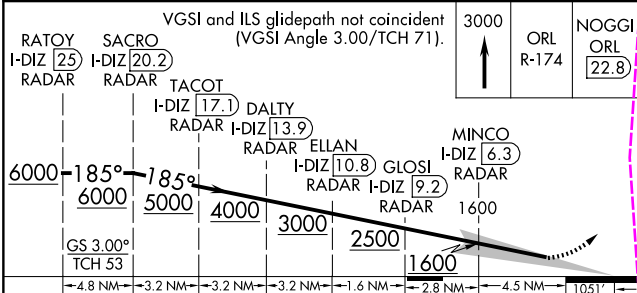
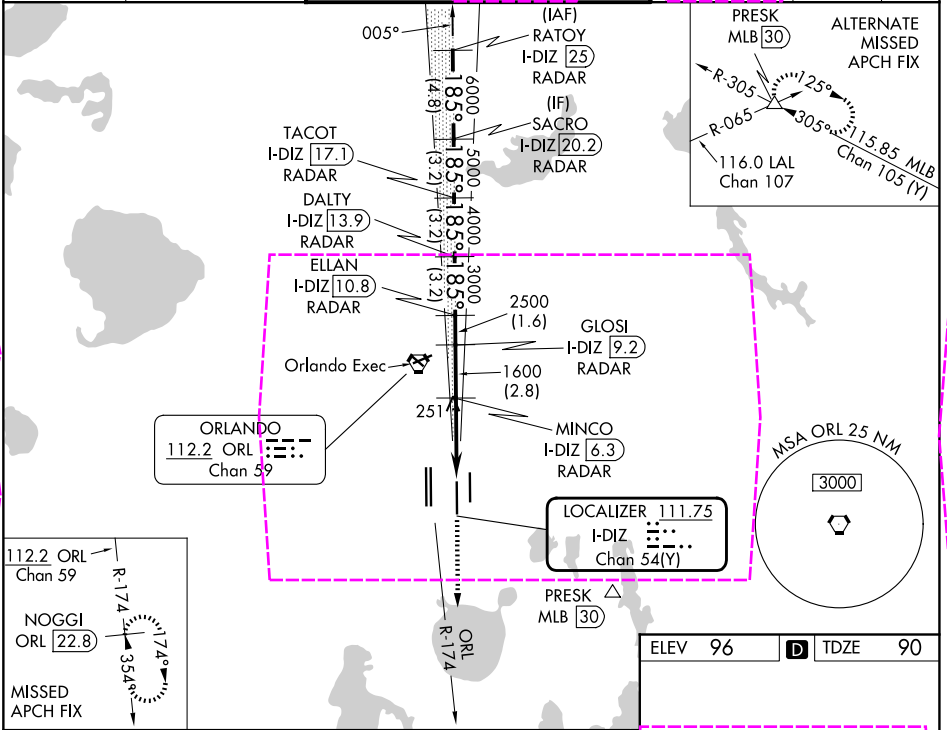
RADAR required for procedure entry. DME or RADAR required.

Simultaneous approach authorized. When using alternate missed approach, simultaneous approach NA. Bright lights on highway midway between Rwy 17L and Rwy 17R may be mistaken for runway lights.

ALSf-2

MISSED APPROACH: Climb to 3000 on ORL VORTAC R-174 to NOGGI/ ORL 22.8 DME and hold.

D-ATIS ARR 121.25 DEP 120.525	ORLANDO APP CON 124.8 307.0	ORLANDO TOWER 118.45 253.5 124.3 253.5 (17L-35R, 17R-35L) (18L-36R, 18R-36L)	GND CON 126.4 (E) 121.8 (W)	CLNC DEL 134.7 341.7	CPDLC
---	---------------------------------------	--	---	--	-------



CATEGORY	A	B	C	D
S-ILS 17R	RA 104/12 100 DA 190			
CATEGORY II ILS - SPECIAL AIRCREW & AIRCRAFT CERTIFICATION REQUIRED				
HIRL all Rwys REIL Rwy 36L TDZ/CL Rwys 17L/R, 18R, 35L/R and 36R				

ORLANDO, FLORIDA
Amdt 5F 29DEC22

28°26'N-81°19'W

ORLANDO INTL (MCO)
ILS RWY 17R (CAT II)

SE-3, 07 AUG 2025 to 04 SEP 2025

SE-3, 07 AUG 2025 to 04 SEP 2025