

ORLANDO, FLORIDA

AL-571 (FAA)

24249

LOC/DME I-ARK 110.95 Chan 46(Y)	APP CRS 185°	Rwy Idg 9001 TDZE 90 Apt Elev 96
---	------------------------	---

ILS RWY 17L (SA CAT I)

ORLANDO INTL (MCO)

RNAV 1-DME/DME/IRU or GPS or RADAR required for procedure entry.
DME or RADAR required.

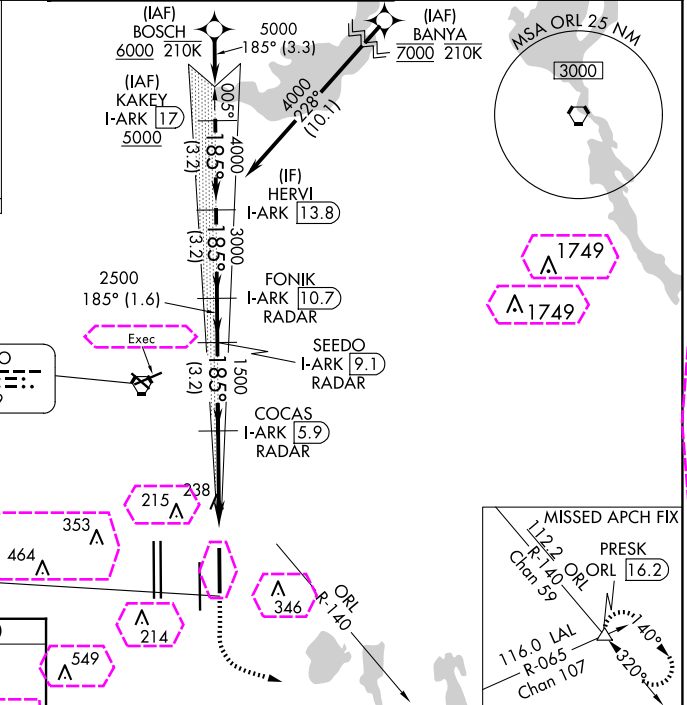
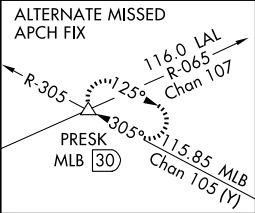
ALSF-2

MISSED APPROACH: Climb to 500 then
climbing left turn to 3000 on heading 100°
and ORL VORTAC R-140 to PRESK INT/ORL
16.2 DME and hold, continue climb-in-
hold to 3000.

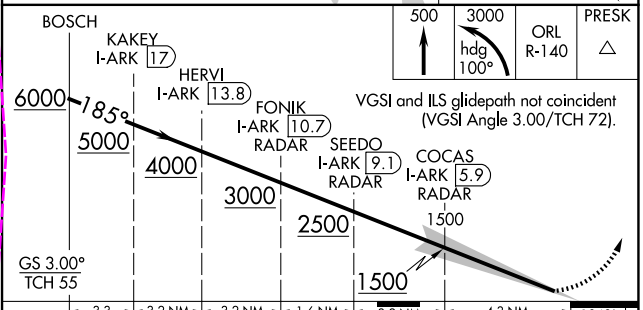
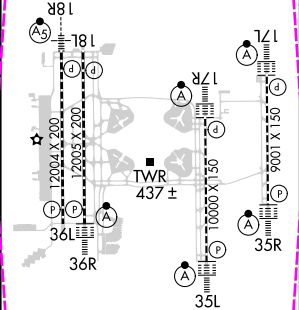
▼ Bright lights on highway midway between Rwy 17L and Rwy 17R may
be mistaken for runway lights. Simultaneous approach authorized.
Requires specific OPSPEC, MSPEC, or LOA approval.



D-ATIS ARR 121.25 DEP 120.525	ORLANDO APP CON 124.8 307.0	ORLANDO TOWER 118.45 253.5 (Rwys 17L-35R, 17R-35L) 124.3 253.5 (Rwys 18L-36R, 18R-36L)	GND CON 126.4 (East) 121.8 (West)	CLNC DEL 134.7 341.7	CPDLC
---	---------------------------------------	--	---	--	-------



ELEV 96	D	TDZE 90
---------	---	---------



HIRL all Rwys
REIL Rwy 36L
TDZ/CL Rwys 17L/18R, 35L/36R
and 36R

CATEGORY	A	B	C	D
S-ILS 17L	RA 145/14 150 DA 240			
SA CATEGORY I ILS - SPECIAL AIRCREW & AIRCRAFT CERTIFICATION REQUIRED				

ORLANDO, FLORIDA
Amdt 4B 29DEC22

28°26'N-81°19'W

ORLANDO INTL (MCO)
ILS RWY 17L (SA CAT I)

SE-3, 10 JUL 2025 to 07 AUG 2025

SE-3, 10 JUL 2025 to 07 AUG 2025

RNAV 1-DME/DME/IRU or GPS or RADAR required for procedure entry.
DME or RADAR required.

ALSF-2

MISSED APPROACH: Climb to 500 then climbing left turn to 3000 on heading 100° and ORL VORTAC R-140 to PRESK INT/ORL 16.2 DME and hold, continue climb-in-hold to 3000.

▲ Bright lights on highway midway between Rwy 17L and Rwy 17R may be mistaken for runway lights. Simultaneous approach authorized.
Requires specific OPSPEC, MSPEC, or LOA approval.

▲

D-ATIS	ORLANDO APP CON	ORLANDO TOWER	GND CON	CLNC DEL	CPDLC
ARR 121.25	124.8 307.0	118.45 253.5 (17L-35R, 17R-35L)	126.4 (E)	134.7	
DEP 120.525		124.3 253.5 (18L-36R, 18R-36L)	121.8 (W)	341.7	

