

(ALYNA.ALYNA4) 24025

AL-571 (FAA)

ALYNA FOUR ARRIVAL (RNAV)

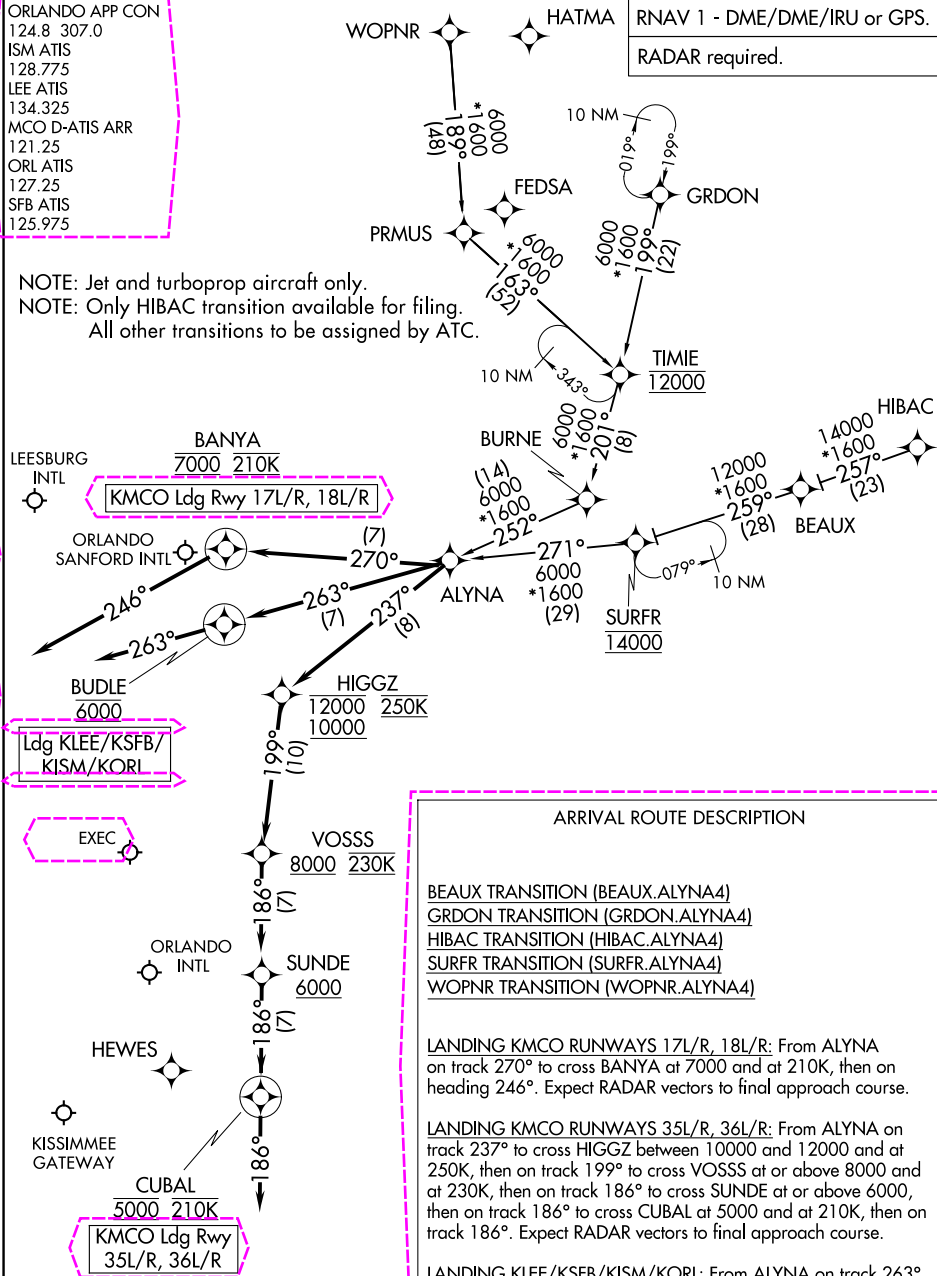
ORLANDO, FLORIDA

ORLANDO APP CON
124.8 307.0
ISM ATIS
128.775
LEE ATIS
134.325
MCO D-ATIS ARR
121.25
ORL ATIS
127.25
SFB ATIS
125.975

RNAV 1 - DME/DME/IRU or GPS.

RADAR required.

NOTE: Jet and turboprop aircraft only.
NOTE: Only HIBAC transition available for filing.
All other transitions to be assigned by ATC.



ARRIVAL ROUTE DESCRIPTION

BEAUX TRANSITION (BEAUX.ALYNA4)
GRDON TRANSITION (GRDON.ALYNA4)
HIBAC TRANSITION (HIBAC.ALYNA4)
SURFR TRANSITION (SURFR.ALYNA4)
WOPNR TRANSITION (WOPNR.ALYNA4)

LANDING KMCO RUNWAYS 17L/R, 18L/R: From ALYNA on track 270° to cross BANYA at 7000 and at 210K, then on heading 246°. Expect RADAR vectors to final approach course.

LANDING KMCO RUNWAYS 35L/R, 36L/R: From ALYNA on track 237° to cross HIGGZ between 10000 and 12000 and at 250K, then on track 199° to cross VOSSS at or above 8000 and at 230K, then on track 186° to cross SUNDE at or above 6000, then on track 186° to cross CUBAL at 5000 and at 210K, then on track 186°. Expect RADAR vectors to final approach course.

LANDING KLEE/KSFB/KISM/KORL: From ALYNA on track 263° to cross BUDLE at 6000, then on heading 263°. Expect RADAR vectors to final approach course.

NOTE: Chart not to scale.

ALYNA FOUR ARRIVAL (RNAV)

(ALYNA.ALYNA4) 25JAN24

ORLANDO, FLORIDA

SE-3. 10 JUL 2025 to 07 AUG 2025

SE-3, 10 JUL 2025 to 07 AUG 2025

(ALYNA.ALYNA4) 25219

AL-571 (FAA)

ALYNA FOUR ARRIVAL (RNAV)

ORLANDO, FLORIDA

ORLANDO APP CON
124.8 307.0
ISM ATIS
128.775
LEE ATIS
134.325
MCO D-ATIS ARR
121.25
ORL ATIS
127.25
SFB ATIS
125.975

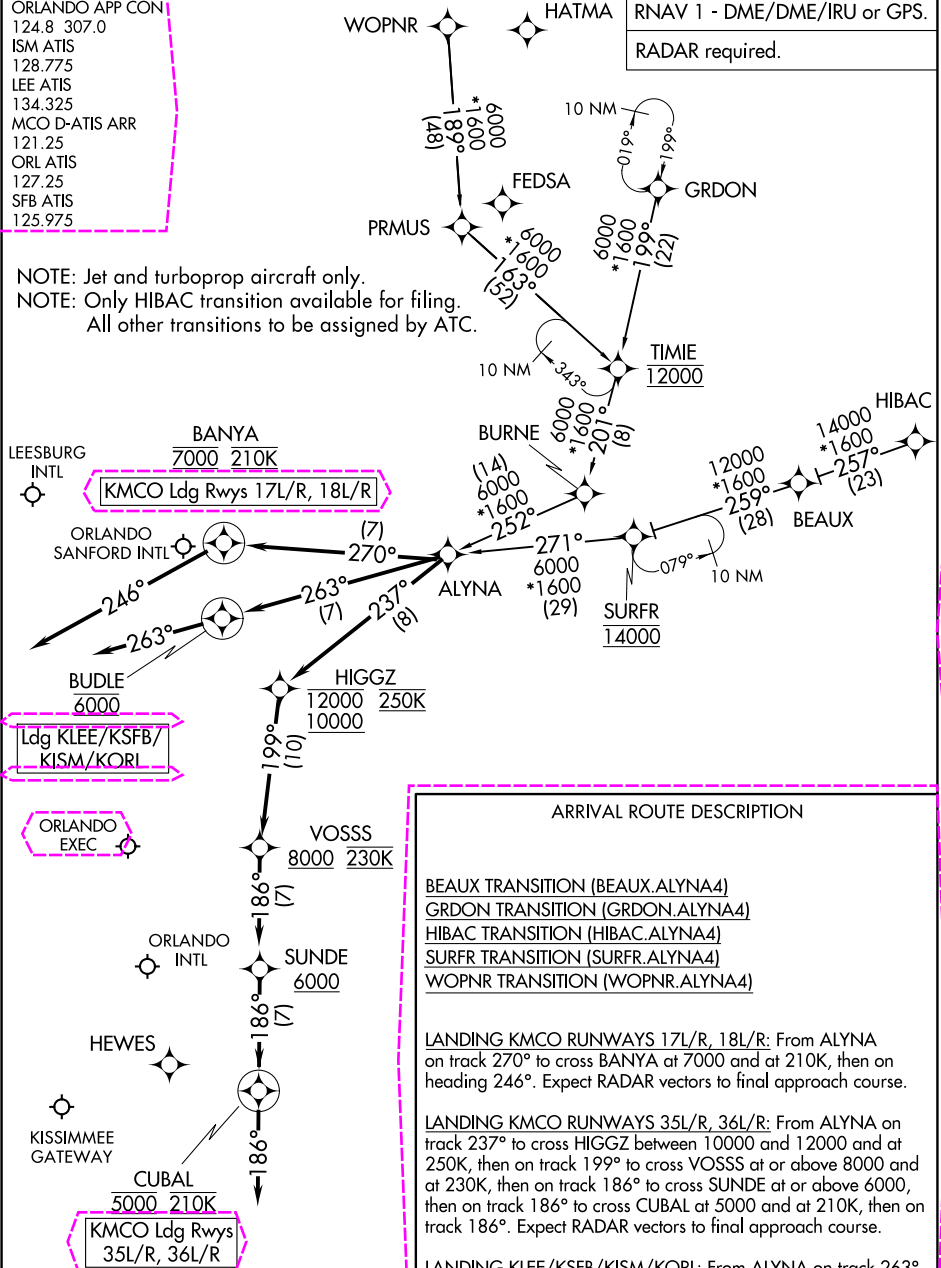
WOPNR

HATMA

RNAV 1 - DME/DME/IRU or GPS.

RADAR required.

NOTE: Jet and turboprop aircraft only.
NOTE: Only HIBAC transition available for filing.
All other transitions to be assigned by ATC.



ARRIVAL ROUTE DESCRIPTION

BEAUX TRANSITION (BEAUX.ALYNA4)
GRDON TRANSITION (GRDON.ALYNA4)
HIBAC TRANSITION (HIBAC.ALYNA4)
SURFR TRANSITION (SURFR.ALYNA4)
WOPNR TRANSITION (WOPNR.ALYNA4)

LANDING KMCO RUNWAYS 17L/R, 18L/R: From ALYNA on track 270° to cross BANYA at 7000 and at 210K, then on heading 246°. Expect RADAR vectors to final approach course.

LANDING KMCO RUNWAYS 35L/R, 36L/R: From ALYNA on track 237° to cross HIGGZ between 10000 and 12000 and at 250K, then on track 199° to cross VOSSS at or above 8000 and at 230K, then on track 186° to cross SUNDE at or above 6000, then on track 186° to cross CUBAL at 5000 and at 210K, then on track 186°. Expect RADAR vectors to final approach course.

LANDING KLEE/KSFB/KISM/KORL: From ALYNA on track 263° to cross BUDLE at 6000, then on heading 263°. Expect RADAR vectors to final approach course.

NOTE: Chart not to scale.

ALYNA FOUR ARRIVAL (RNAV)

(ALYNA.ALYNA4) 25JAN24

ORLANDO, FLORIDA

SE-3, 07 AUG 2025 to 04 SEP 2025

SE-3, 07 AUG 2025 to 04 SEP 2025