

SW-2, 10 JUL 2025 to 07 AUG 2025

LOC I-MER	APP CRS	Rwy Ldg	<b>11802</b>
<b><u>109.5</u></b>	<b>306°</b>	TDZE	<b>181</b>
		Apt Elev	<b>190</b>

ILS or LOC RWY 31  
CASTLE (MER)

DME required for LOC only.

**T** Circling NA southwest of Rwy 13-31. DME from HYP VOR/DME.  
**A** Simultaneous reception of I-MER and HYP DME required.

ALSF-1

**MISSED APPROACH:** Climb to 1000 then climbing right turn to 3000 direct HYP VOR/DME and hold.

ATIS  
124.475

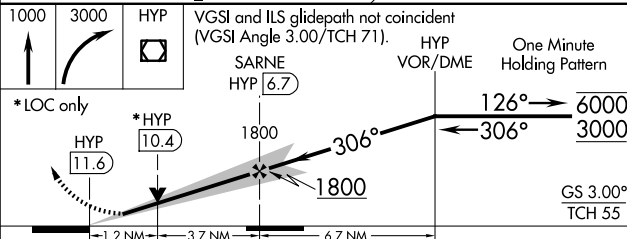
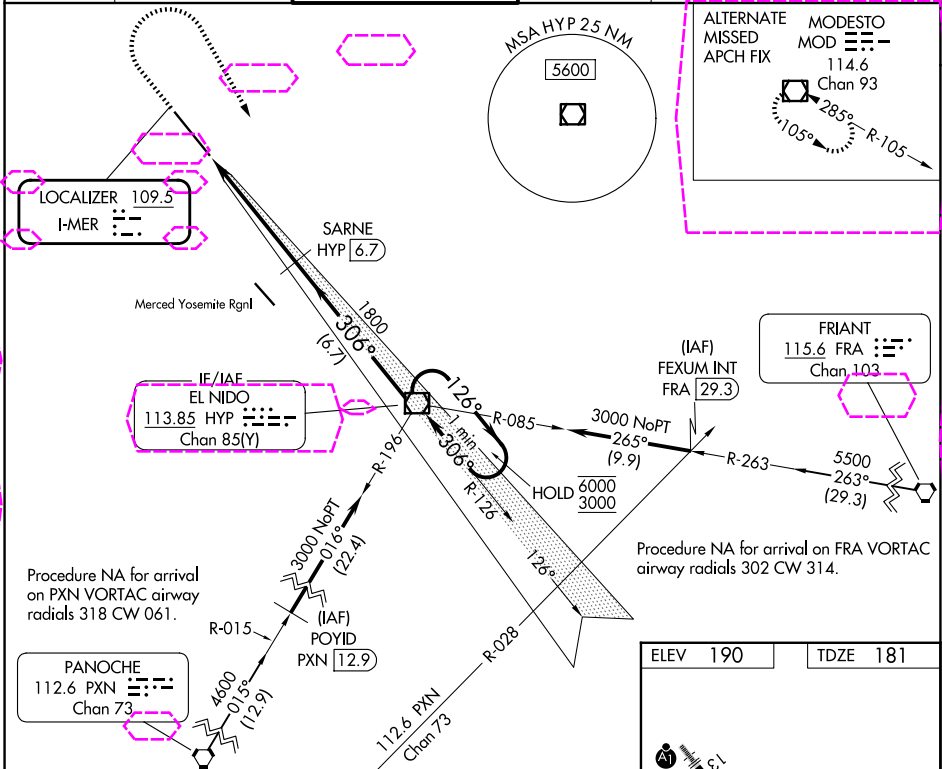
NORCAL APP CON  
**120.95 269.45**

CASTLE TOWER ★  
118.175 (CTAF) 235.775

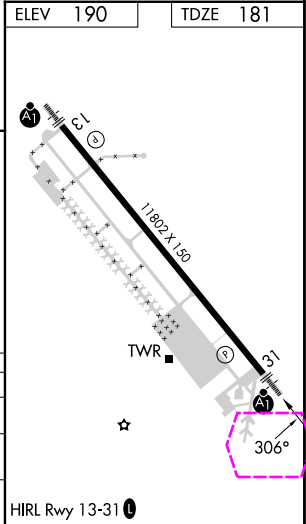
GND CON  
133,575

UNICOM  
122.95

123.0 L



CATEGORY	A	B	C	D
S-ILS 31	381-½ 200 (200-½)			
S-LOC 31	620-½ 439 (500-½)		620-¾ 439 (500-¾)	
CIRCLING	660-1 470 (500-1)		720-1½ 530 (600-1½)	800-2 610 (700-2)



ATWATER, CALIFORNIA  
Amdt 3 05DEC19

37°23'N-120°34'W

CASTLE (MER)  
ILS or LOC RWY 31

SW-2, 07 AUG 2025 to 04 SEP 2025

SW-2, 07 AUG 2025 to 04 SEP 2025