

(VUDOO.VUDOO2) 21168

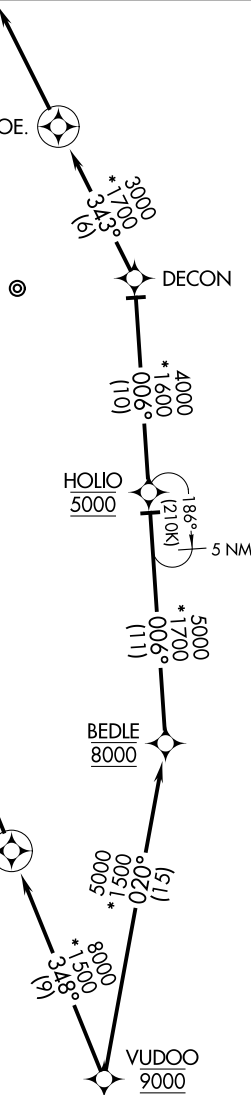
AL-561

JOINT BASE ANDREWS (A.D.W)
CAMP SPRINGS, MARYLAND

VUDOO TWO ARRIVAL (RNAV) Arrival Routes

POTOMAC APP CON
126.4 282.375
D-ATIS
133.675 251.05
TOWER
118.4 349.0

REVOE
Landing south: Rwy 19L/R:
Expect RADAR vectors to
final approach course after REVOE.



ARRIVAL ROUTE DESCRIPTION

LANDING NORTH RWYS 11L/R: From VUDOO on track 348° to cross FUNNY at 8000, then on track 348°. Expect RADAR vectors to final approach course.

LANDING SOUTH RWYS 19L/R: From VUDOO on track 020° to cross BEDLE at 8000, then on track 006° to cross HOLIO at 5000, then on track 006° to DECON, then on track 343° to REVOE, then on track 343°. Expect RADAR vectors to final approach course.

VUDOO TWO ARRIVAL (RNAV) Arrival Routes

(VUDOO.VUDOO2) 15344

CAMP SPRINGS, MARYLAND
JOINT BASE ANDREWS (A.D.W)

NE-3, 10 JUL 2025 to 07 AUG 2025

NE-3, 10 JUL 2025 to 07 AUG 2025

(VUDOO.VUDOO2) 25219

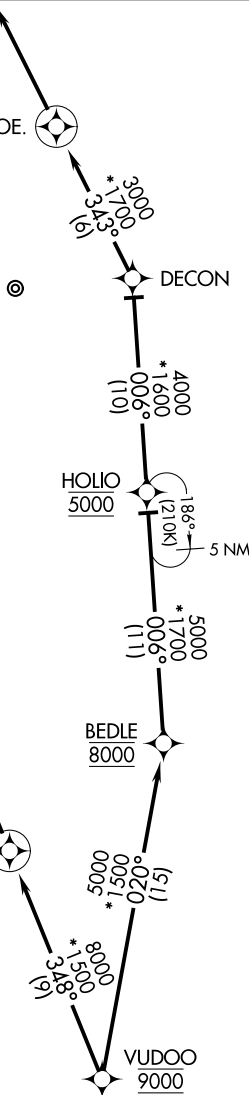
AL-561

JOINT BASE ANDREWS (KADW)
CAMP SPRINGS, MARYLAND

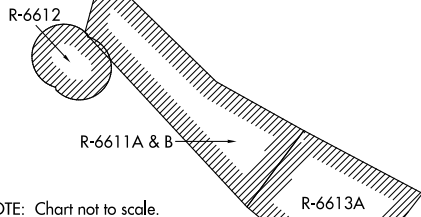
VUDOO TWO ARRIVAL (RNAV) Arrival Routes

POTOMAC APP CON
126.4 282.375
D-ATIS
133.675 251.05
TOWER
118.4 349.0

REVOE
Landing south: Rwy 19L/R:
Expect RADAR vectors to
final approach course after REVOE.



NOTE: RADAR required.
NOTE: RNAV 1.
NOTE: DME/DME/IRU or GPS required.
NOTE: P56 area A/B 1.5 NM north of DCA,
avoid surface to 18000 MSL.



NOTE: Chart not to scale.

ARRIVAL ROUTE DESCRIPTION

LANDING NORTH RWYS 1L/R: From VUDOO on track 348° to cross FUNNY at 8000, then on track 348°. Expect RADAR vectors to final approach course.

LANDING SOUTH RWYS 19L/R: From VUDOO on track 020° to cross BEDLE at 8000, then on track 006° to cross HOLIO at 5000, then on track 006° to DECON, then on track 343° to REVOE, then on track 343°. Expect RADAR vectors to final approach course.

VUDOO TWO ARRIVAL (RNAV) Arrival Routes

(VUDOO.VUDOO2) 10DEC15

CAMP SPRINGS, MARYLAND
JOINT BASE ANDREWS (KADW)

NE-3, 07 AUG 2025 to 04 SEP 2025

NE-3, 07 AUG 2025 to 04 SEP 2025