

KEARNEY, NEBRASKA

AL-541 (FAA)

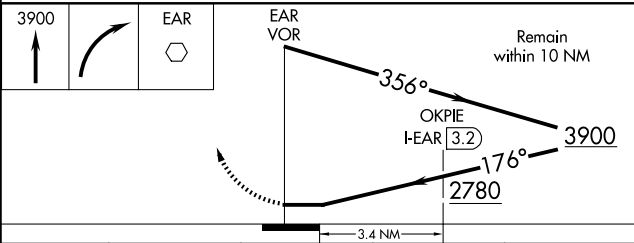
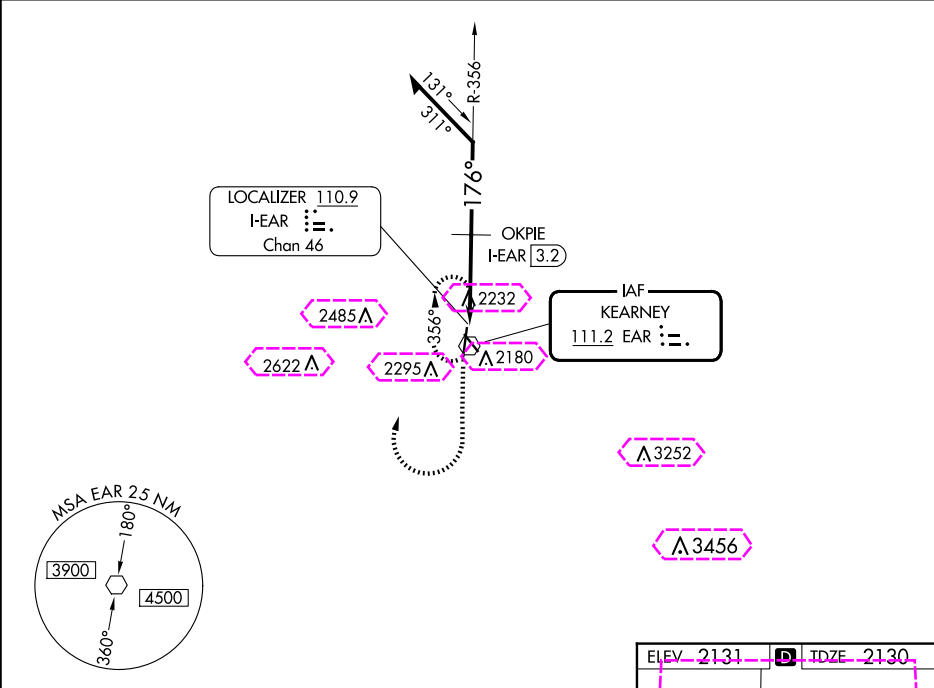
24137

VOR EAR 111.2	APP CRS 176°	Rwy Idg 7094 TDZE 2130 Apt Elev 2131
-------------------------	------------------------	---

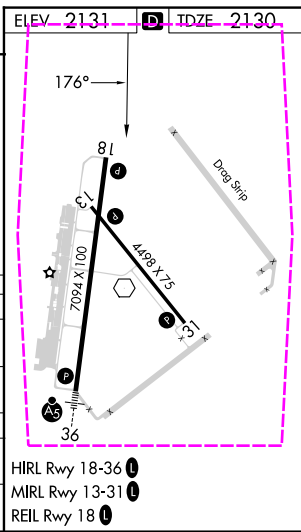
VOR RWY 18
KEARNEY RGNL (E.A.R.)

T A	MISSED APPROACH: Climb to 3900 then right turn direct EAR VOR and hold.
----------------------	---

AWOS-3PT 123.875	MINNEAPOLIS CENTER 119.4 278.8	UNICOM 123.0 (CTAF) 0
----------------------------	--	---------------------------------



CATEGORY	A	B	C	D
S-18	2780-1	650 (700-1)	2780-1 3/4 650 (700-1 3/4)	2780-1 1/2 650 (700-1 1/2)
CIRCLING	2780-1	649 (700-1)	2780-1 3/4 649 (700-1 3/4)	2840-2 1/4 709 (800-2 1/4)
OKPIE FIX MINIMUMS				
S-18	2660-1	530 (600-1)	2660-1 1/2	530 (600-1 1/2)
CIRCLING	2660-1	529 (600-1)	2660-1 1/2 529 (600-1 1/2)	2840-2 1/4 709 (800-2 1/4)



NC-2, 07 AUG 2025 to 04 SEP 2025