

KEARNEY, NEBRASKA

AL-541 (FAA)

24249

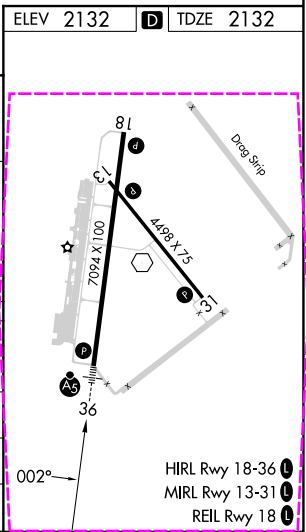
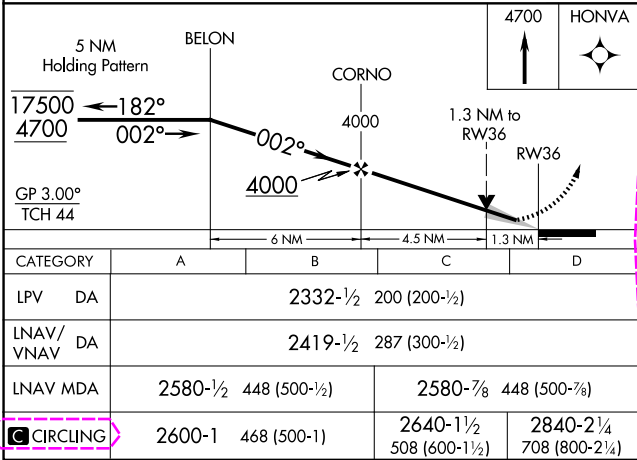
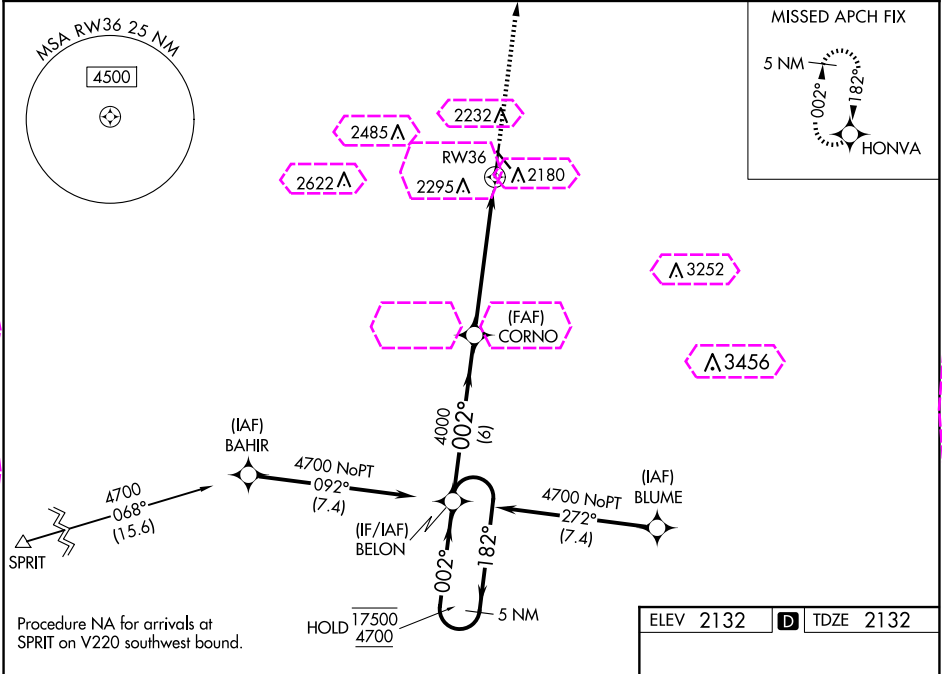
WAAS CH <b>90113</b> <b>W36A</b>	APP CRS <b>002°</b>	Rwy Idg <b>7094</b> TDZE <b>2132</b> Apt Elev <b>2132</b>
--	------------------------	---

# RNAV (GPS) RWY 36

KEARNEY RGNL (E.A.R.)

RNP APCH - GPS.	MALSR	MISSED APPROACH: Climb to 4700 direct HONVA and hold.
<p>▼ For uncompensated Baro-VNAV systems, LNAV/VNAV NA below -22°C or above 54°C. For inop ALS, increase LNAV/VNAV all Cats visibility to ½ SM.</p>		

AWOS-3PT <b>123.875</b>	MINNEAPOLIS CENTER <b>119.4 278.8</b>	UNICOM <b>123.0 (CTAF) 0</b>
----------------------------	--	---------------------------------



KEARNEY, NEBRASKA  
Amdt 3 05SEP24

40°44'N-99°00'W

KEARNEY RGNL (E.A.R.)  
RNAV (GPS) RWY 36

NC-2, 10 JUL 2025 to 07 AUG 2025

NC-2, 10 JUL 2025 to 07 AUG 2025

KEARNEY, NEBRASKA

AL-541 (FAA)

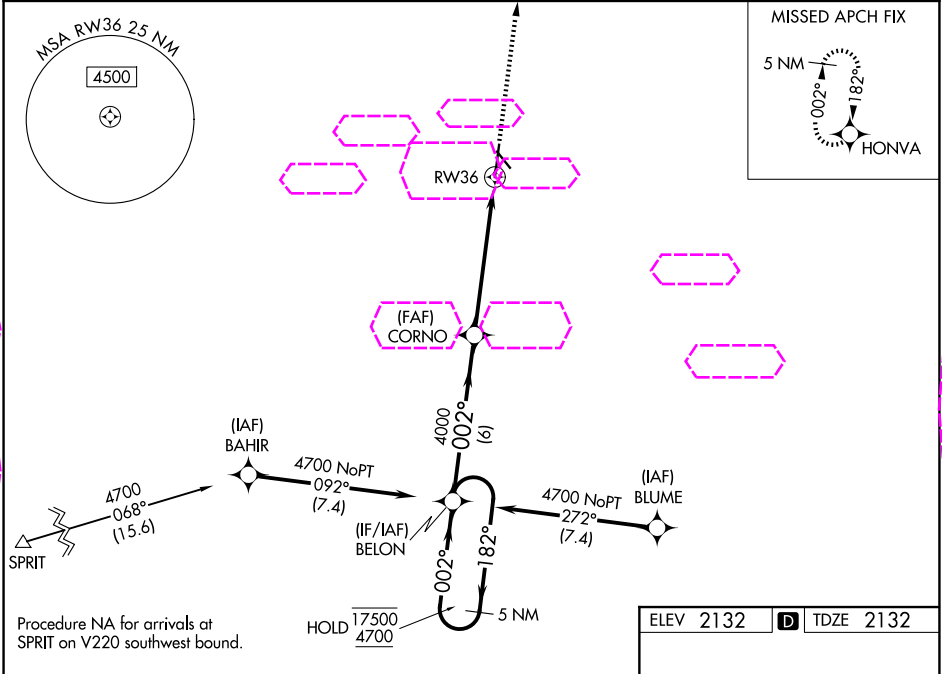
25219

WAAS CH <b>90113</b> <b>W36A</b>	APP CRS <b>002°</b>	Rwy Ldg TDZE <b>2132</b> Apt Elev <b>2132</b>
--	------------------------	---

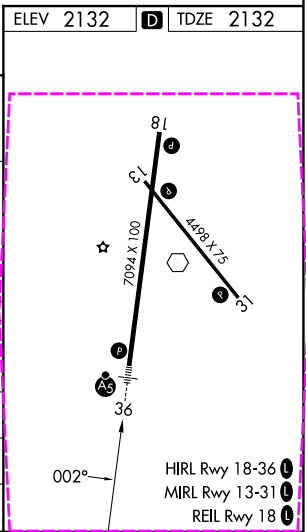
**RNAV (GPS) RWY 36**  
KEARNEY RGNL (E.A.R.)

RNP APCH - GPS. ▼ For uncompensated Baro-VNAV systems, LNAV/VNAV NA below -22°C or above 54°C. For inop ALS, increase LNAV/VNAV all Cats visibility to ½ SM. ▲	MALSR AS	MISSED APPROACH: Climb to 4700 direct HONVA and hold.
--	-------------	---

AWOS-3PT <b>123.875</b>	MINNEAPOLIS CENTER <b>119.4 278.8</b>	UNICOM <b>123.0 (CTAF) 0</b>
----------------------------	--	---------------------------------



5 NM Holding Pattern		BELON	CORNO	4700	HONVA
17500 4700		←182°	002°	4000	1.3 NM to RWY 36
GP 3.00° TCH 44		002°	4000		
		6 NM	4.5 NM	1.3 NM	
CATEGORY	A	B	C	D	
LPV DA	2332-½		200 (200-½)		
LNAV/VNAV DA	2419-½		287 (300-½)		
LNAV MDA	2580-½	448 (500-½)	2580-7/8	448 (500-7/8)	
CIRCLING	2600-1	468 (500-1)	2640-1½ 508 (600-1½)	2840-2¼ 708 (800-2¼)	



KEARNEY, NEBRASKA  
Amdt 3 05SEP24

40°44'N-99°00'W

KEARNEY RGNL (E.A.R.)  
**RNAV (GPS) RWY 36**

NC-2, 07 AUG 2025 to 04 SEP 2025

NC-2, 07 AUG 2025 to 04 SEP 2025