

KEARNEY, NEBRASKA


AL-541 (FAA)

24249

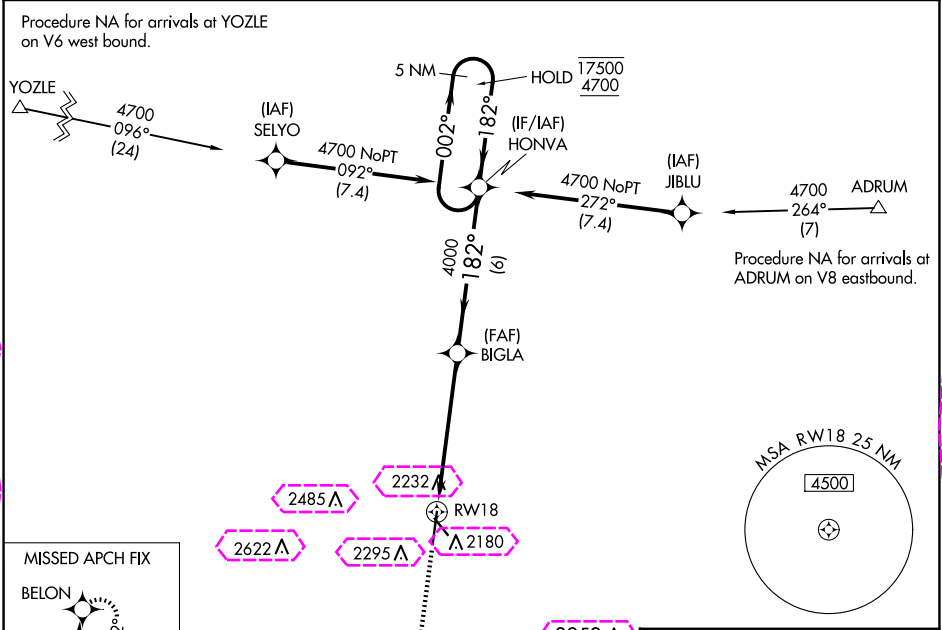
WAAS CH <b>86213</b> <b>W18A</b>	APP CRS <b>182°</b>	Rwy Idg <b>7094</b> TDZE <b>2130</b> Apt Elev <b>2132</b>
----------------------------------------	------------------------	-----------------------------------------------------------------

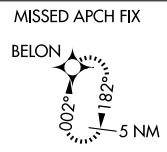
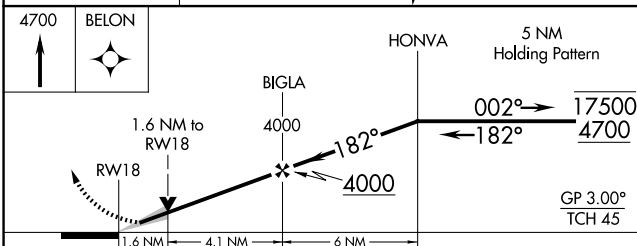

# RNAV (GPS) RWY 18

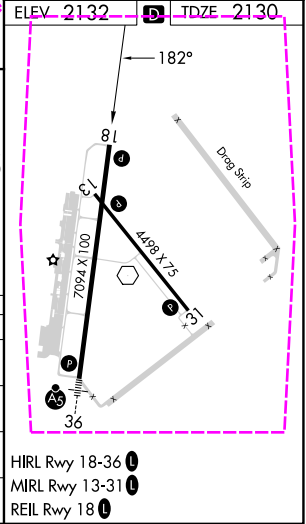
KEARNEY RGNL (E.A.R.)

RNP APCH - GPS.	MISSED APPROACH: Climb to 4700 direct BELON and hold.
 For uncompensated Baro-VNAV systems, LNAV/VNAV NA below -23°C or above 54°C.	

AWOS-3PT <b>123.875</b>	MINNEAPOLIS CENTER <b>119.4 278.8</b>	UNICOM <b>123.0 (CTAF) 0</b>
----------------------------	------------------------------------------	---------------------------------



				
				
CATEGORY	A	B	C	D
LPV DA	2330-3/4		200 (200-3/4)	
LNAV/VNAV DA	2393-7/8		263 (300-7/8)	
LNAV MDA	2680-1 550 (600-1)		2680-1 5/8 550 (600-1%)	
 CIRCLING	2680-1 548 (600-1)		2680-1 5/8 548 (600-1%) 2840-2 1/4 708 (800-2 1/4)	



KEARNEY, NEBRASKA  
Amdt 1A 05SEP24

40°44'N-99°00'W

KEARNEY RGNL (E.A.R.)  
**RNAV (GPS) RWY 18**

NC-2, 10 JUL 2025 to 07 AUG 2025

NC-2, 10 JUL 2025 to 07 AUG 2025

KEARNEY, NEBRASKA

AL-541 (FAA)


25219

WAAS CH <b>86213</b> <b>W18A</b>	APP CRS <b>182°</b>	Rwy Ldg <b>7094</b> TDZE <b>2130</b> Apt Elev <b>2132</b>
----------------------------------------	------------------------	-----------------------------------------------------------------

# RNAV (GPS) RWY 18

KEARNEY RGNL (E.A.R.)

RNP APCH - GPS.

 For uncompensated Baro-VNAV systems, LNAV/VNAV NA below -23°C or above 54°C.

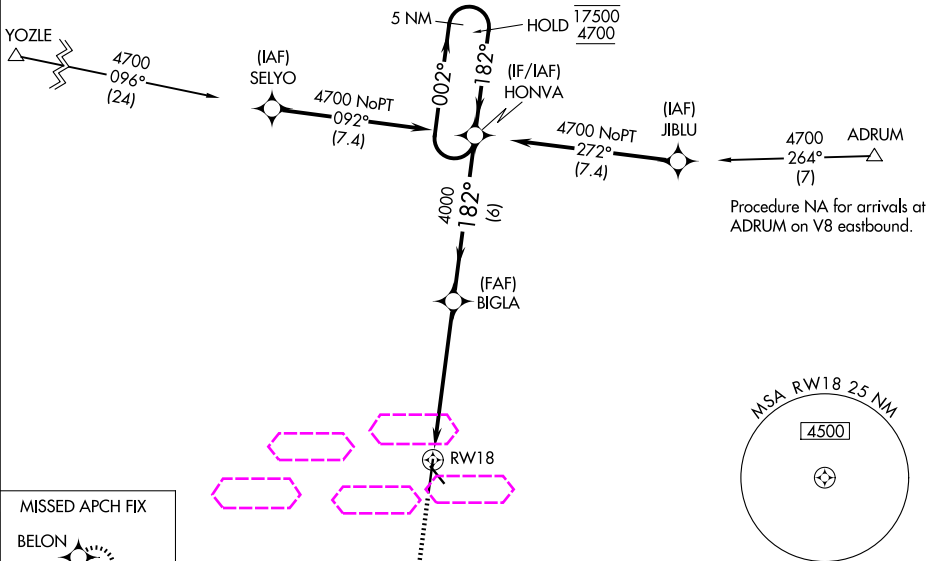
MISSED APPROACH: Climb to 4700 direct BELON and hold.

AWOS-3PT  
**123.875**

MINNEAPOLIS CENTER  
**119.4 278.8**

UNICOM  
**123.0 (CTAF) 0**

Procedure NA for arrivals at YOZLE on V6 west bound.

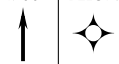


MISSED APCH FIX

BELON

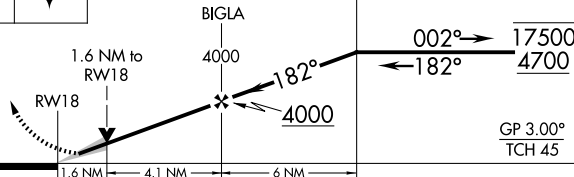


4700 BELON

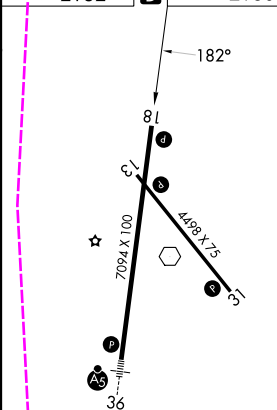


HONVA

5 NM Holding Pattern



ELEV. 2132 TDZE 2130



CATEGORY	A	B	C	D
LPV DA		2330-3/4	200 (200-3/4)	
LNAV/VNAV DA		2393-7/8	263 (300-7/8)	
LNAV MDA	2680-1 550 (600-1)		2680-1 5/8 550 (600-1%)	
CIRCLING	2680-1 548 (600-1)		2680-1 5/8 548 (600-1%)	2840-2 1/4 708 (800-2 1/4)

HIRL Rwy 18-36 0  
MIRL Rwy 13-31 0  
REIL Rwy 18 0

KEARNEY, NEBRASKA  
Amdt 1A 05SEP24

40°44'N-99°00'W

KEARNEY RGNL (E.A.R.)  
**RNAV (GPS) RWY 18**

NC-2, 07 AUG 2025 to 04 SEP 2025

NC-2, 07 AUG 2025 to 04 SEP 2025