

KEARNEY, NEBRASKA

AL-541 (FAA)

24137

WAAS CH 65631 W13A	APP CRS 136°	Rwy Idg 4498 TDZE 2130 Apt Elev 2131
--	------------------------	---

RNAV (GPS) RWY 13

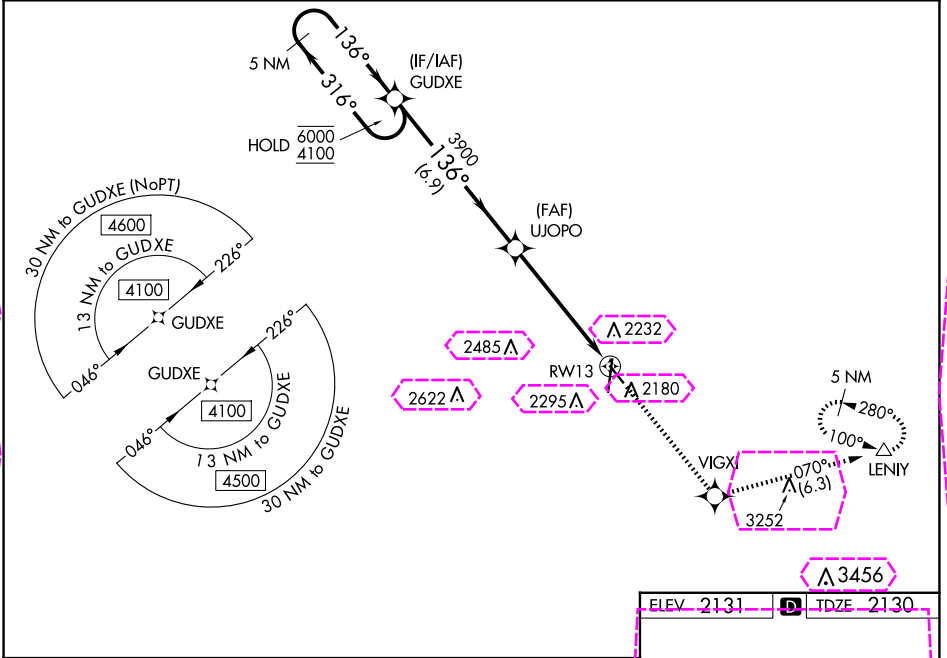
KEARNEY RGNL (E.A.R.)

RNP APCH.

⚠ Baro-VNAV and VDP NA when using Holdrege altimeter setting. For uncompensated Baro-VNAV systems, LNAV/VNAV NA below -23°C or above 54°C. When local altimeter setting not received, use Holdrege altimeter setting: increase LPV DA to 2407 feet and all Cats visibility $\frac{3}{8}$ SM; increase LNAV/VNAV DA to 2457 feet and all Cats visibility $\frac{3}{8}$ SM and all MDAs 80 feet; increase visibility LNAV and Circling Cat C $\frac{1}{8}$ SM.

MISSED APPROACH: Climb to 4300 direct VIGXI and on track 070° to LENIY and hold.

AWOS-3PT 123.875	MINNEAPOLIS CENTER 119.4 278.8	UNICOM 123.0 (CTAF) 0
----------------------------	--	---------------------------------



VGSI and RNAV glidepath not coincident (VGSI Angle 3.00/TCH 43).		4300	VIGXI	tr 070°	LENIY
5 NM Holding Pattern		GUDXE	UJOPO		
6000 ← 316° → 4100		136°	3900	*1.5 NM to RW13	*LNAV only
GP 3.00° TCH 43					
		6.9 NM	3.9 NM	1.5 NM	
CATEGORY	A	B	C	D	
LPV DA	2330- $\frac{3}{4}$		200 (200- $\frac{3}{4}$)	NA	
LNAV/VNAV DA	2380- $\frac{3}{4}$		250 (300- $\frac{3}{4}$)	NA	
LNAV MDA	2720-1	590 (600-1)	2720-1 $\frac{3}{4}$ 590 (600-1 $\frac{3}{4}$)	NA	
CIRCLING	2720-1	589 (600-1)	2720-1 $\frac{3}{4}$ 589 (600-1 $\frac{3}{4}$)	NA	

ELEV 2131 TDZE 2130

HIRL Rwy 18-36 0

MIRL Rwy 13-31 0

REIL Rwy 18 0

KEARNEY, NEBRASKA
Orig-C 15AUG19

40°44'N-99°00'W

KEARNEY RGNL (E.A.R.)
RNAV (GPS) RWY 13

NC-2, 10 JUL 2025 to 07 AUG 2025

NC-2, 10 JUL 2025 to 07 AUG 2025

KEARNEY, NEBRASKA

AL-541 (FAA)

25219

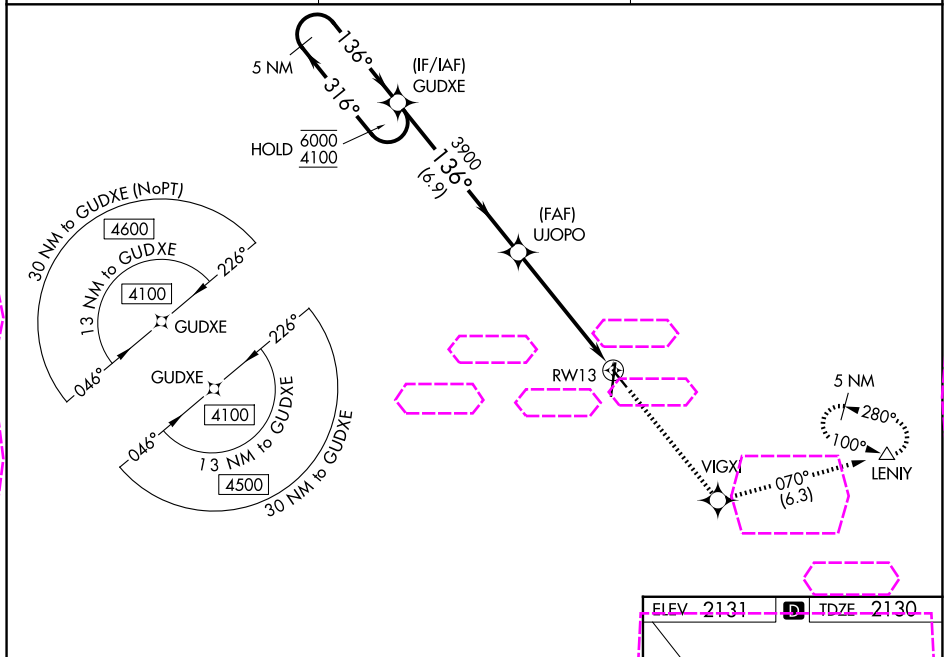
WAAS CH 65631 W13A	APP CRS 136°	Rwy Ldg 4498 TDZE 2130 Apt Elev 2131
--	------------------------	---

RNAV (GPS) RWY 13

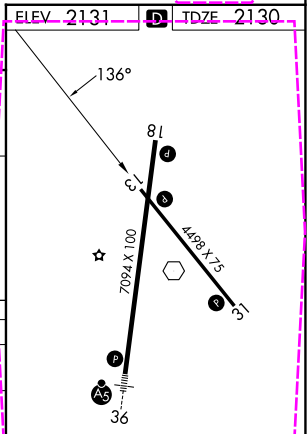
KEARNEY RGNL (E.A.R.)

RNP APCH.	<p>Baro-VNAV and VDP NA when using Holdrege altimeter setting. For uncompensated Baro-VNAV systems, LNAV/VNAV NA below -23°C or above 54°C. When local altimeter setting not received, use Holdrege altimeter setting: increase LPV DA to 2407 feet and all Cats visibility $\frac{3}{8}$ SM; increase LNAV/VNAV DA to 2457 feet and all Cats visibility $\frac{3}{8}$ SM and all MDAs 80 feet; increase visibility LNAV and Circling Cat C $\frac{1}{8}$ SM.</p>	MISSED APPROACH: Climb to 4300 direct VIGXI and on track 070° to LENIY and hold.
-----------	--	--

AWOS-3PT 123.875	MINNEAPOLIS CENTER 119.4 278.8	UNICOM 123.0 (CTAF) 0
----------------------------	--	---------------------------------



VGSI and RNAV glidepath not coincident (VGSI Angle 3.00/TCH 43).		4300	VIGXI	tr 070°	LENIY
5 NM Holding Pattern		GUDXE	UJOPO		
6000 ← 316° → 4100		136°	3900	*1.5 NM to RWY 13	*LNAV only
GP 3.00° TCH 43					
		6.9 NM	3.9 NM	1.5 NM	
CATEGORY	A	B	C	D	
LPV DA	2330- $\frac{3}{4}$	200 (200- $\frac{3}{4}$)		NA	
LNAV/VNAV DA	2380- $\frac{3}{4}$	250 (300- $\frac{3}{4}$)		NA	
LNAV MDA	2720-1	590 (600-1)	2720-1 $\frac{3}{4}$ 590 (600-1 $\frac{3}{4}$)	NA	
CIRCLING	2720-1	589 (600-1)	2720-1 $\frac{3}{4}$ 589 (600-1 $\frac{3}{4}$)	NA	



KEARNEY, NEBRASKA
Orig-C 15AUG19

40°44'N-99°00'W

KEARNEY RGNL (E.A.R.)
RNAV (GPS) RWY 13

NC-2, 07 AUG 2025 to 04 SEP 2025

NC-2, 07 AUG 2025 to 04 SEP 2025