

KEARNEY, NEBRASKA

AL-541 (FAA)

24249

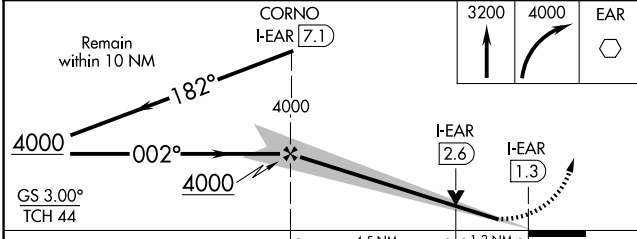
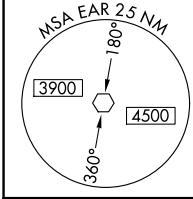
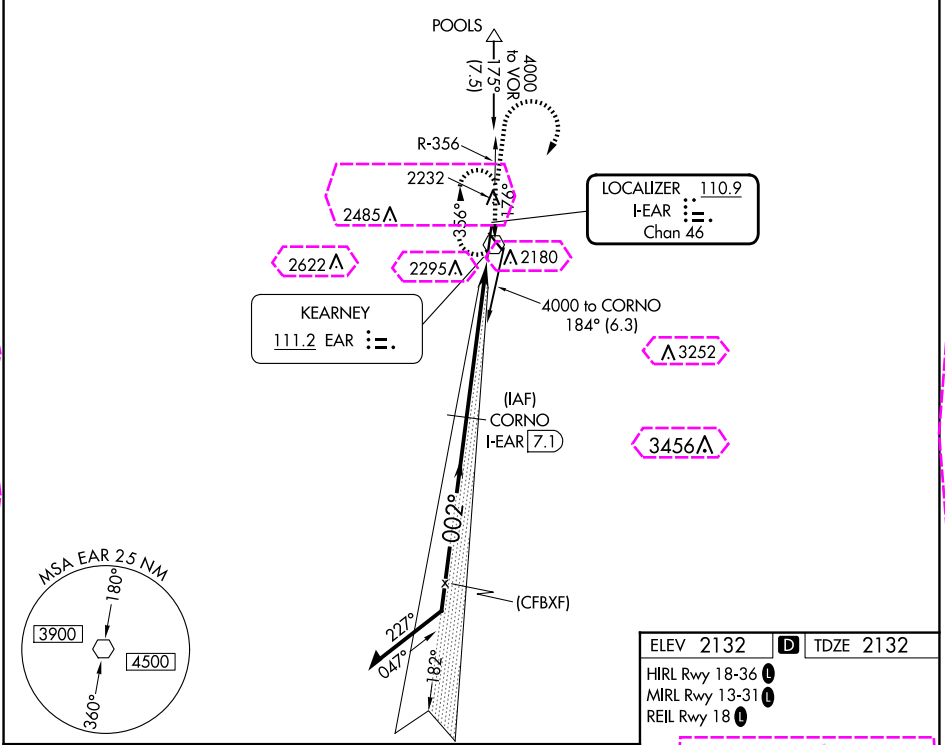
LOC/DME I- EAR 110.9 Chan 46	APP CRS 002°	Rwy Idg 7094 TDZE 2132 Apt Elev 2132
---	------------------------	---

ILS or LOC RWY 36

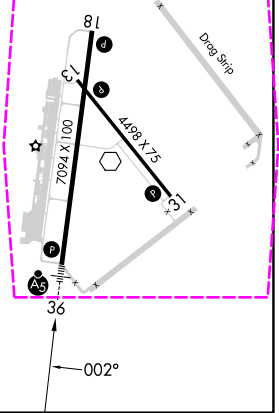
KEARNEY RGNL (EAR)

DME required. NA	MALSR AS	MISSED APPROACH: Climb to 3200 then climbing right turn to 4000 direct EAR VOR and hold, continue climb-in-hold to 4000.
---------------------	-------------	--

AWOS-3PT 123.875	MINNEAPOLIS CENTER 119.4 278.8	UNICOM 123.0 (CTAF) 1
----------------------------	--	---------------------------------



ELEV 2132	D	TDZE 2132
HIRL Rwy 18-36	1	
MIRL Rwy 13-31	1	
REIL Rwy 18	1	



CATEGORY	A	B	C	D
S-ILS 36		2332-1/2	200 (200-1/2)	
S-LOC 36	2580-1/2	448 (500-1/2)	2580-7/8	448 (500-7/8)
CIRCLING	2600-1	468 (500-1)	2640-1 1/2 508 (600-1 1/2)	2840-2 1/4 708 (800-2 1/4)

KEARNEY, NEBRASKA
Amdt 4 05SEP24

40°44'N-99°00'W

ILS or LOC RWY 36

KEARNEY RGNL (EAR)

NC-2, 10 JUL 2025 to 07 AUG 2025

NC-2, 10 JUL 2025 to 07 AUG 2025

LOC/DME FEAR 110.9 Chan 46	APP CRS 002°	Rwy Ldg 7094 TDZE 2132 Apt Elev 2132
--	------------------------	---

ILS or LOC RWY 36
KEARNEY RGNL (EAR)

DME required.



MALSRS



MISSED APPROACH: Climb to 3200 then climbing right turn to 4000 direct EAR VOR and hold, continue climb-in-hold to 4000.

AWOS-3PT 123.875	MINNEAPOLIS CENTER 119.4 278.8	UNICOM 123.0 (CTAF) ①
----------------------------	--	---------------------------------

