

(PIKES3.DEN) 25163

## PIKES THREE DEPARTURE

AL-538 (FAA)

BUCKLEY SPACE FORCE BASE (BKF)

AURORA, COLORADO

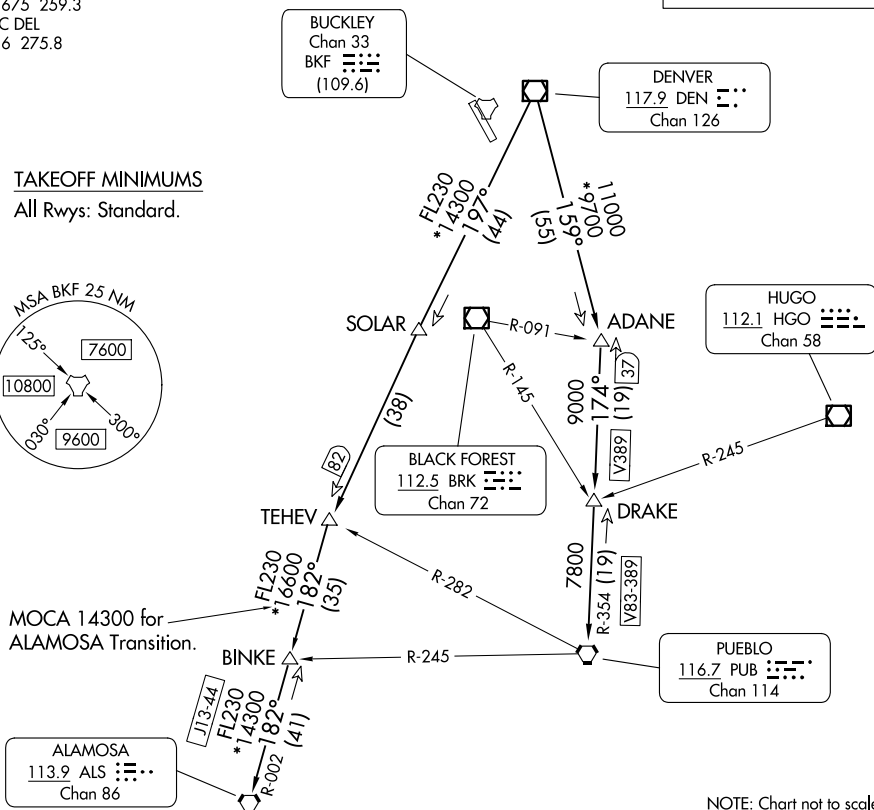
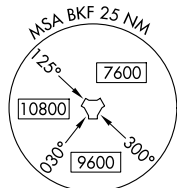
DENVER DEP CON  
128.45 251.075  
ATIS  
119.675 259.3  
CLNC DEL  
121.6 275.8

RADAR required.

**TOP ALTITUDE:  
ASSIGNED BY ATC**

## TAKEOFF MINIMUMS

All Rwyys: Standard.



NOTE: Chart not to scale.

## DEPARTURE ROUTE DESCRIPTION

**TAKEOFF ALL RUNWAYS:** Fly assigned heading and altitude for RADAR vectors to assigned route. Expect filed altitude 10 minutes after departure.

**LOST COMMUNICATIONS:** If no transmissions are received within one minute after departure, maintain assigned heading until 7000, then climb to filed altitude direct to DEN VOR/DME, then on assigned route. If filed altitude is above 10000, cross DEN VOR/DME at or above 11000.

ALAMOSA TRANSITION (PIKES3.ALS): From over DEN VOR/DME on DEN R-197 to TEHEV, then on ALS R-002 to ALS VORTAC.

BINKE TRANSITION (PIKES3.BINKE): From over DEN VOR/DME on DEN R-197 to TEHEV, then on ALS R-002 to BINKE.

PUEBLO TRANSITION (PIKES3.PUB): From over DEN VOR/DME on DEN R-159 to ADANE, then on PUB R-354 to PUB VORTAC.

## PIKES THREE DEPARTURE

(PIKES3.DEN) 12JUN25

AURORA, COLORADO

BUCKLEY SPACE FORCE BASE (BKF)

SW-1, 10 JUL 2025 to 07 AUG 2025

SW-1, 10 JUL 2025 to 07 AUG 2025

(PIKES3.DEN) 25219

PIKES THREE DEPARTURE

AL-538 (FAA)

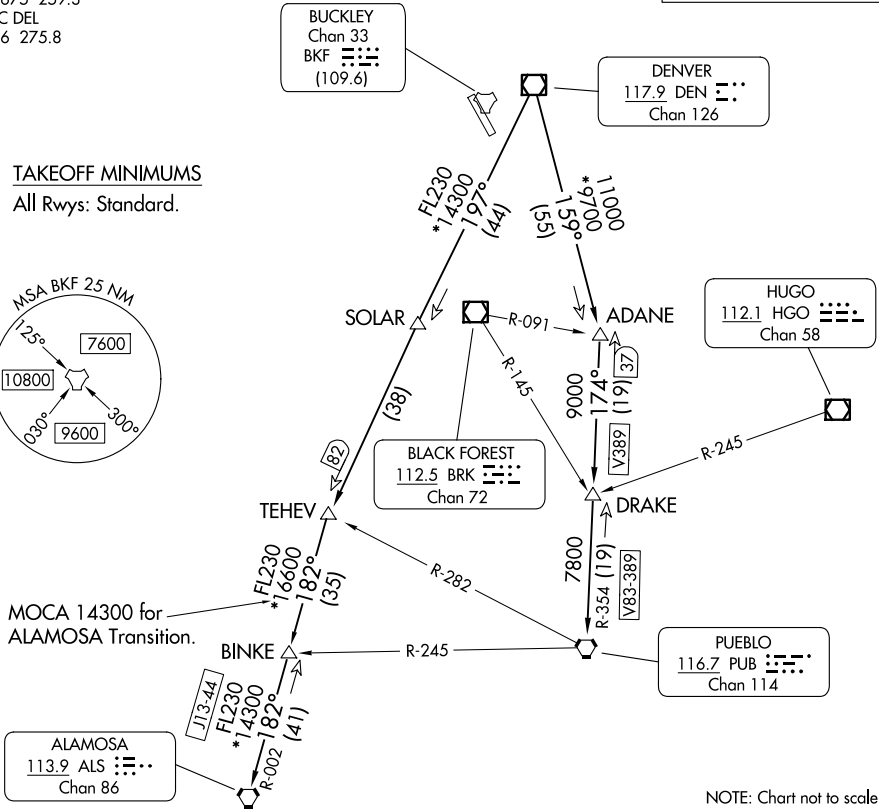
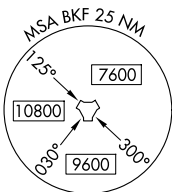
BUCKLEY SPACE FORCE BASE (KBKF)  
AURORA, COLORADO

DENVER DEP CON  
128.45 251.075  
ATIS  
119.675 259.3  
CLNC DEL  
121.6 275.8

RADAR required.

TOP ALTITUDE:  
ASSIGNED BY ATC

TAKEOFF MINIMUMS  
All Rwys: Standard.



SW-1, 07 AUG 2025 to 04 SEP 2025

SW-1, 07 AUG 2025 to 04 SEP 2025



DEPARTURE ROUTE DESCRIPTION

TAKEOFF ALL RUNWAYS: Fly assigned heading and altitude for RADAR vectors to assigned route. Expect filed altitude 10 minutes after departure.

LOST COMMUNICATIONS: If no transmissions are received within one minute after departure, maintain assigned heading until 7000, then climb to filed altitude direct to DEN VOR/DME, then on assigned route. If filed altitude is above 10000, cross DEN VOR/DME at or above 11000.

ALAMOSA TRANSITION (PIKES3.ALS): From over DEN VOR/DME on DEN R-197 to TEHEV, then on ALS R-002 to ALS VORTAC.

BINKE TRANSITION (PIKES3.BINKE): From over DEN VOR/DME on DEN R-197 to TEHEV, then on ALS R-002 to BINKE.

PUEBLO TRANSITION (PIKES3.PUB): From over DEN VOR/DME on DEN R-159 to ADANE, then on PUB R-354 to PUB VORTAC.

PIKES THREE DEPARTURE

(PIKES3.DEN) 12JUN25

AURORA, COLORADO  
BUCKLEY SPACE FORCE BASE (KBKF)