

BARRE/MONTPELIER, VERMONT

AL-522 (FAA)

24361

APP CRS	Rwy Idg	4498
348°	TDZE	1158
	Apt Elev	1166

RNAV (GPS) RWY 35

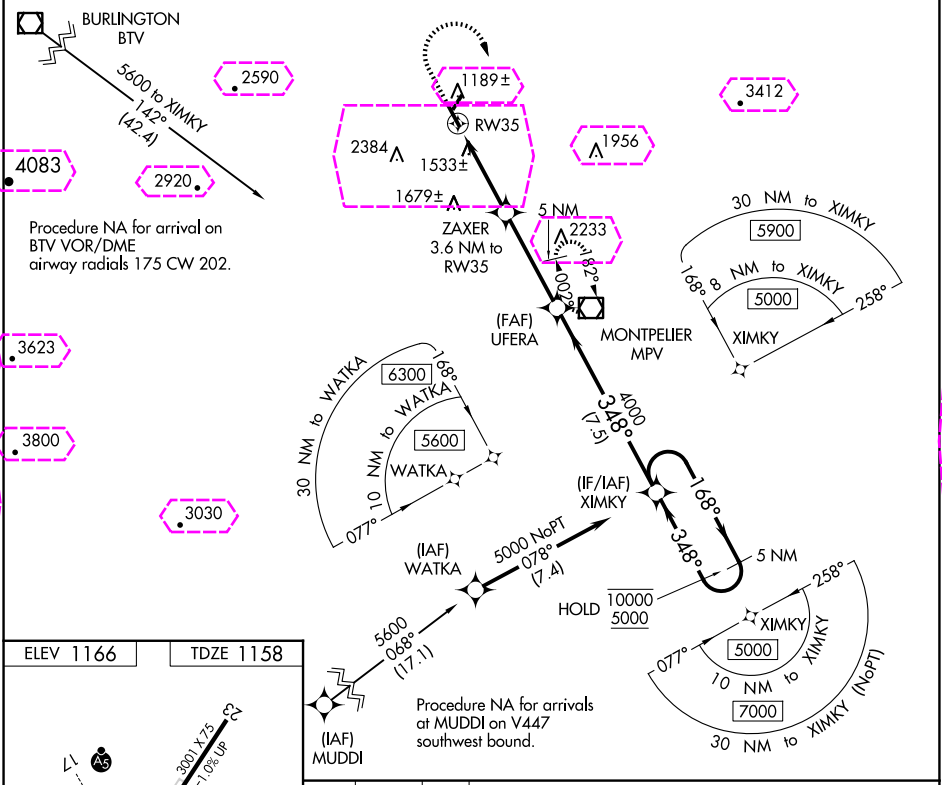
EDWARD F KNAPP STATE (MPV)

RNP APCH:

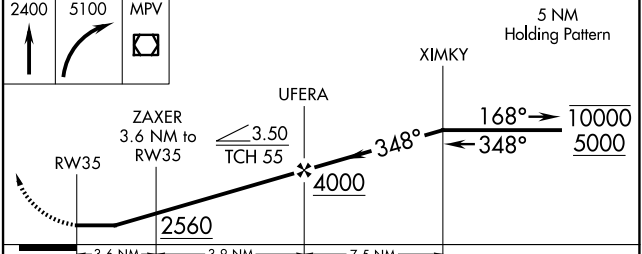
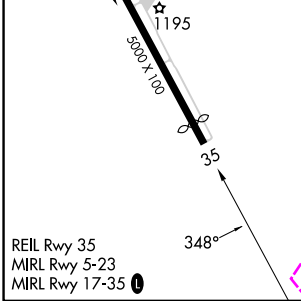
Rwy 35 helicopter visibility reduction below 1 SM NA.
 NA When local altimeter setting not received, procedure NA.
 -20°C Straight-in Rwy 35 NA at night, Circling Rwy 5, 35 NA at night.

MISSED APPROACH: (Do not exceed 225K)
Climb to 2400 then climbing right turn to 5100 direct MPV VOR/DME and hold, continue climb-in-hold to 5100.

ASOS 132.675	BOSTON CENTER 135.7 282.2	UNICOM 122.8 (CTAF)
-----------------	------------------------------	------------------------



ELEV 1166	TDZE 1158
-----------	-----------



CATEGORY	A	B	C	D
LNAV MDA	1940-1 782 (800-1)	1940-1¼ 782 (800-1¼)	1940-2½ 782 (800-2½)	2900-3 1734 (1800-3)
CIRCLING	1980-1¼	814 (900-1¼)	2700-3 1534 (1600-3)	2900-3 1734 (1800-3)

BARRE/MONTPELIER, VERMONT
Amdt 2 17JUN21

44°12'N-72°34'W

EDWARD F KNAPP STATE (MPV)

RNAV (GPS) RWY 35

NE-1, 10 JUL 2025 to 07 AUG 2025

NE-1, 10 JUL 2025 to 07 AUG 2025

BARRE/MONTPELIER, VERMONT

AL-522 (FAA)

25219

APP CRS	Rwy Ldg	4498
348°	TDZE	1158
	Apt Elev	1166

RNAV (GPS) RWY 35

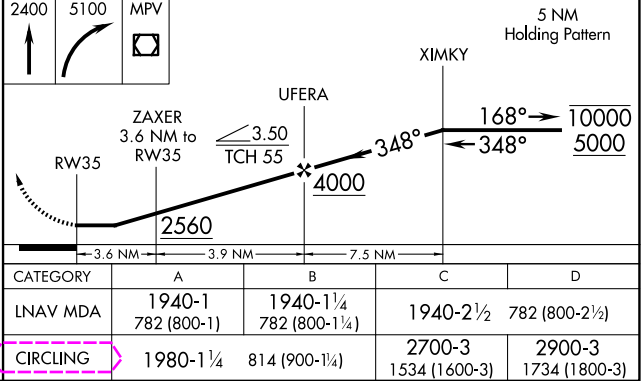
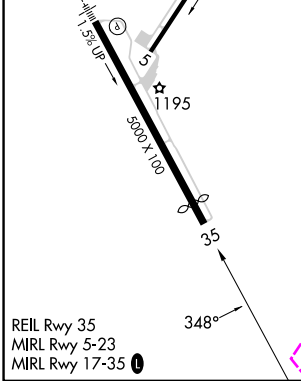
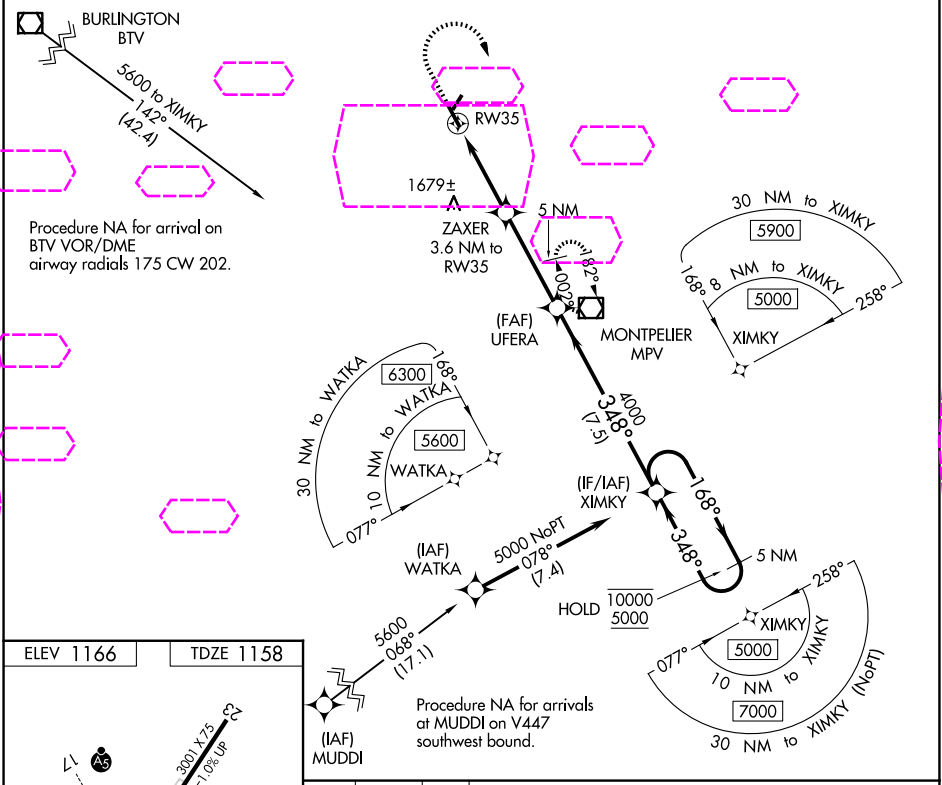
EDWARD F KNAPP STATE (MPV)

RNP APCH:

Rwy 35 helicopter visibility reduction below 1 SM NA.
 When local altimeter setting not received, procedure NA.
 Straight-in Rwy 35 NA at night, Circling Rwy 5, 35 NA at night.

MISSED APPROACH: (Do not exceed 225K)
Climb to 2400 then climbing right turn to 5100 direct MPV VOR/DME and hold, continue climb-in-hold to 5100.

ASOS 132.675	BOSTON CENTER 135.7 282.2	UNICOM 122.8 (CTAF)
-----------------	------------------------------	------------------------



BARRE/MONTPELIER, VERMONT
Amdt 2 17JUN21

44°12'N-72°34'W

EDWARD F KNAPP STATE (MPV)

RNAV (GPS) RWY 35

NE-1, 07 AUG 2025 to 04 SEP 2025

NE-1, 07 AUG 2025 to 04 SEP 2025