

WAAS CH 69611 W17A	APP CRS 168°	Rwy Idg TDZE Apt Elev	5000 1135 1166
--	------------------------	-----------------------------	---

RNAV (GPS) RWY 17

EDWARD F KNAPP STATE (MPV)

RNP APCH - GPS.

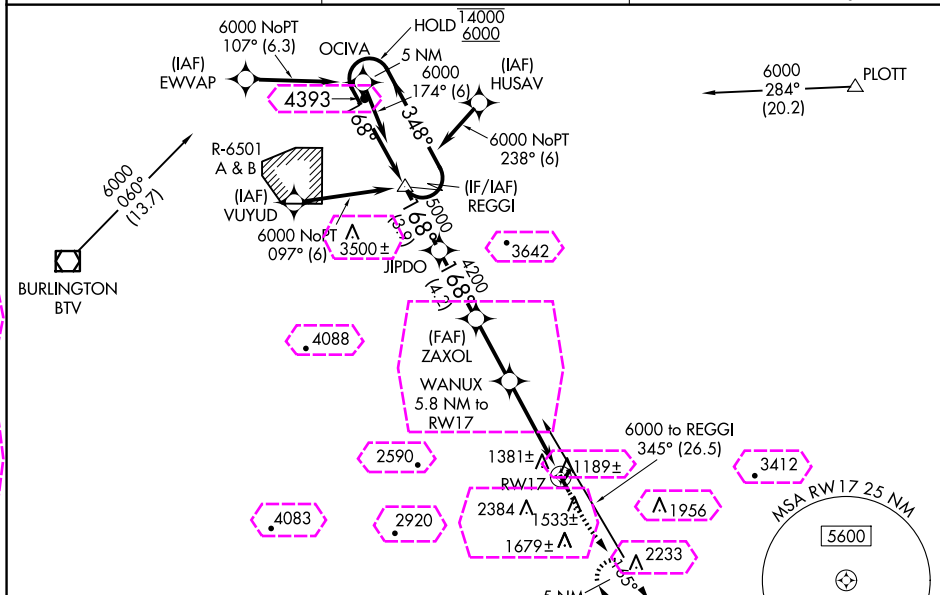
RADAR required for procedure entry at VUYUD.

V Rwy 17 helicopter visibility reduction below 1 SM NA. Inop table does not apply to
A LPV all Cats and LNAV Cats A and B. Baro-VNAV NA. When local altimeter setting
 not received, procedure NA. Straight-in Rwy 17 NA at night. Circling Rwy 5, 17,
 35 NA at night. For inop ALS, increase LNAV/VNAV all Cats visibility to 1 1/2 SM.

MALSR

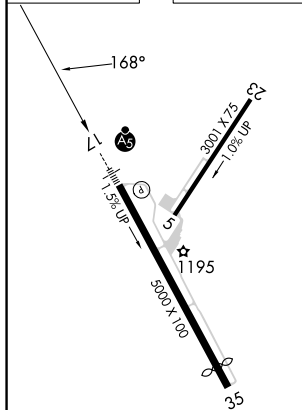
MISSED APPROACH:
Climb to 1720 then
climb to 5200 direct
MPV VOR/DME
and hold, continue
climb-in-hold to 5200.

ASOS 132.675	BOSTON CENTER 135.7 282.2	UNICOM 122.8 (CTAF) L
------------------------	-------------------------------------	---------------------------------



ELEV	1166		TDZE	1135
------	------	--	------	------

Procedure NA for arrival on MPV
VOR/DME airway radials 315 CW 037.






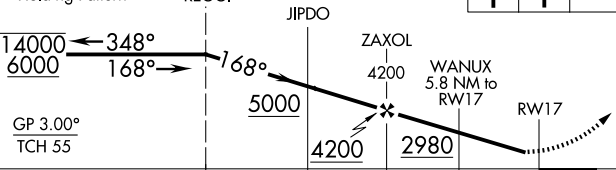
REIL Rwy 35
MIRL Rwy 5-23
MIRL Rwy 17-35 **L**

5 NM VGSI and RNAV glidepath not coincident (VGSI Angle 3.00/TCH 46).

Holding Pattern

VGSI and RNAV glidepath not coincident
(VGSI Angle 3.00/TCH 46).

1720	5200	MPV
		



CATEGORY		A		B		C		D	
LPV	DA	1509-1				374 (400-1)			
RNAV/ VNAV	DA	1624-1				489 (500-1)			
RNAV MDA		1680-1	545 (600-1)			1680-1½	545 (600-1½)		
C CIRCLING		1980-1¼	814 (900-1¼)			2700-3 1534 (1600-3)	2920-3 1754 (1800-3)		

BARRE/MONTPELIER, VERMONT

Amdt 1C 11AUG22

EDWARD F KNAPP STATE (MPV)

RNAV (GPS) RWY 17

44°12'N-72°34'W

WAAS CH 69611 W17A	APP CRS 168°	Rwy Ldg TDZE Apt Elev	5000 1135 1166
--	------------------------	-----------------------------	---

RNAV (GPS) RWY 17

EDWARD F KNAPP STATE (MPV)

RNP APCH - GPS.

RADAR required for procedure entry at VUYUD.

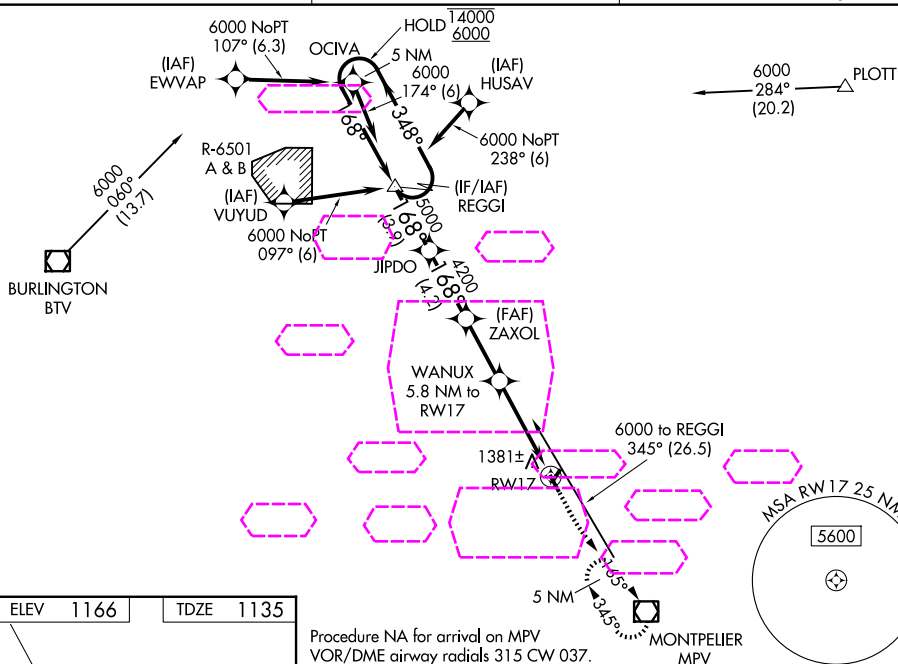
V Rwy 17 helicopter visibility reduction below 1 SM NA. Inop table does not apply to
A LPV all Cots and LNAV Cots A and B, Baro-VNAV NA. When local altimeter setting
190°C not received, procedure NA. Straight-in Rwy 17 NA at night, Circling Rwy 5, 17,
 35 NA at night. For inop ALS, increase LNAV/VNAV all Cots visibility to 1 3/8 SM.

MALSR

MISSED APPROACH:
Climb to 1720 then
climb to 5200 direct
MPV VOR/DME
and hold, continue
climb-in-hold to 5200.

ASOS
132.675




BOSTON CENTER
135.7 282.2

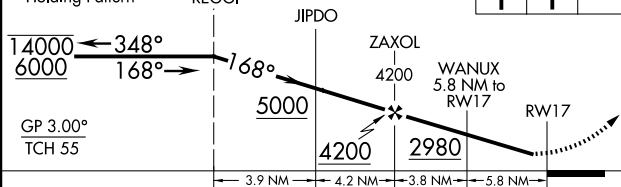
UNICOM
122.8 (CTAF) **L**

ELEV	1166		TDZE	1135
------	------	--	------	------

Procedure NA for arrival on MPV
VOR/DME airway radials 315 CW 037.

5 NM VGSI and RNAV glidepath not coincident (VGSI Angle 3.00/TCH 46).

1720	5200	MPV
		



CATEGORY	A	B	C	D
LPV DA	1509-1		374 (400-1)	
LNAP/ VNAV DA	1624-1		489 (500-1)	
LNAP MDA	1680-1	545 (600-1)	1680-1½	545 (600-1½)
CIRCLING	1980-1¼	814 (900-1¼)	2700-3 1534 (1600-3)	2920-3 1754 (1800-3)

REIL Rwy 35
MIRL Rwy 5-23
MIRL Rwy 17-35 **L**

BARRE/MONTPELIER, VERMONT
Amdt 1C 11AUG22

44°12'N-72°34'W

EDWARD F KNAPP STATE (MPV)
RNAV (GPS) RWY 17

NE-1, 07 AUG 2025 to 04 SEP 2025

NE-1, 07 AUG 2025 to 04 SEP 2025