

BARRE/MONTPELIER, VERMONT

AL-522 (FAA)

24081

LOC/DME I-MPV	APP CRS	Rwy Idg	5000
108.7	168°	TDZE	1135
Chan 24		Apt Elev	1166

ILS or LOC RWY 17

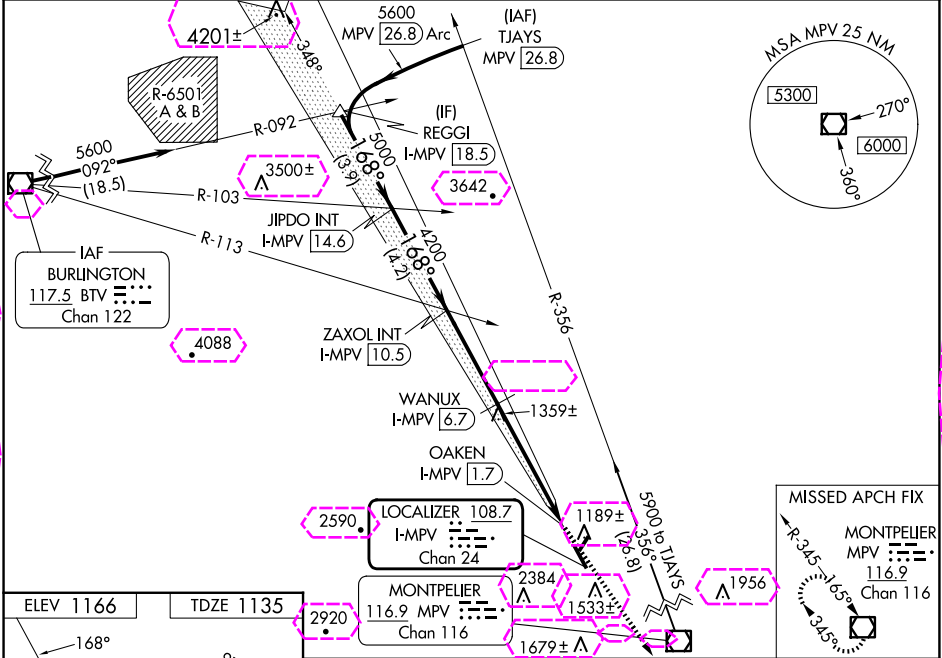
EDWARD F KNAPP STATE (MPV)

NA Inoperative table does not apply to S-LOC 17 Cats A and B. When local altimeter setting not received, procedure NA. Rwy 17 helicopter visibility reduction below ¼ SM NA. Circling Rwy 5, 35 NA at night. For inoperative MALSR, increase S-ILS 17 all Cats visibility to 1½ mile and WANUX fix minimums S-LOC 17 Cats A/B visibility to 1 mile and Cats C/D visibility to 1½ mile.

MALSR

MISSED APPROACH: Climb to 5200 direct MPV VOR/DME and hold, continue climb-hold to 5200.

ASOS	BOSTON CENTER	UNICOM
132.675	135.7 282.2	122.8 (CTAF) 0



ELEV 1166 TDZE 1135

REIL Rwy 35
MIRL Rwy 5-23
MIRL Rwy 17-35 0

FAF to MAP 8.8 NM

Knots	60	90	120	150	180
Min:Sec	8:48	5:52	4:24	3:31	2:56

REGGI I-MPV 18.5 JIPDO INT I-MPV 14.6 ZAXOL INT I-MPV 10.5 WANUX I-MPV 6.7 OAKEN I-MPV 1.7				
GS 3.00° TCH 50				
Use I-MPV DME when on the Localizer course.				
VGSi and ILS glidepath not coincident (VGSi Angle 3.00/TCH 46).				
5200 MPV				
*LOC only				
CATEGORY	A	B	C	D
S-ILS 17	1486-¾ 351 (400-¾)			
S-LOC 17	2980-1¼ 1845 (1900-1¼)	2980-1½ 1845 (1900-1½)	2980-3	1845 (1900-3)
CIRCLING	2980-1¼ 1814 (1900-1¼)	2980-1½ 1814 (1900-1½)	2980-3	1814 (1900-3)
WANUX FIX MINIMUMS				
S-LOC 17	1660-¾	525 (500-¾)	1660-1¼	525 (500-1¼)
CIRCLING	1980-1¼	814 (900-1¼)	2700-3 1534 (1600-3)	2920-3 1754 (1800-3)

BARRE/MONTPELIER, VERMONT
Amdt 7C 14JUL22

44°12'N-72°34'W

EDWARD F KNAPP STATE (MPV)

ILS or LOC RWY 17

NE-1, 10 JUL 2025 to 07 AUG 2025

NE-1, 10 JUL 2025 to 07 AUG 2025

BARRE/MONTPELIER, VERMONT

AL-522 (FAA)


25219

LOC/DME I-MPV 108.7 Chan 24	APP CRS 168°	Rwy Ldg TDZE Apt Elev	5000 1135 1166
--	------------------------	-----------------------------	---

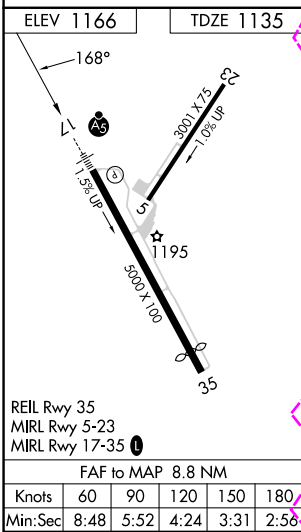
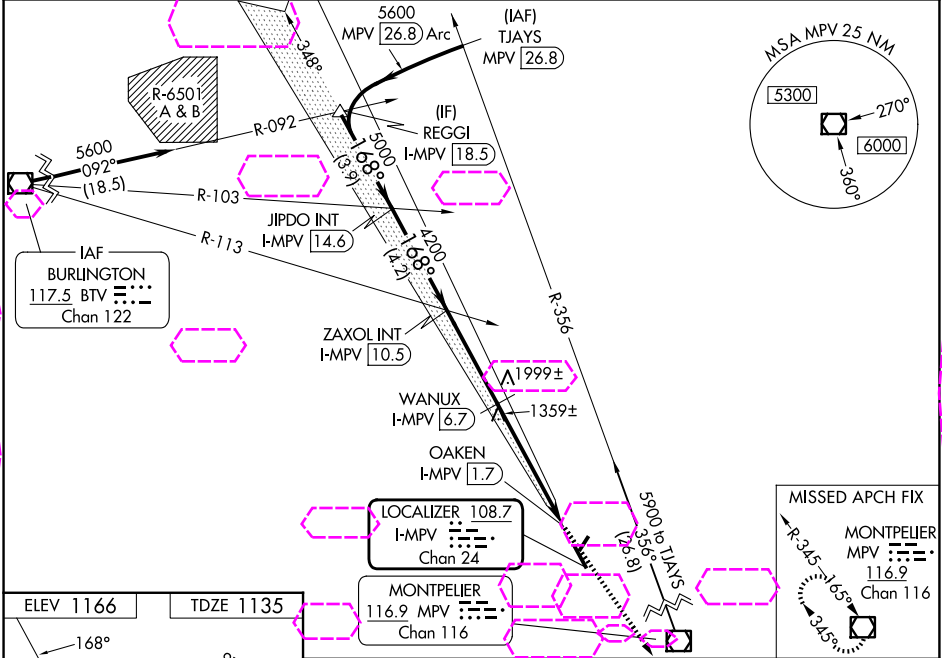
ILS or LOC RWY 17

EDWARD F KNAPP STATE (MPV)

NA Inoperative table does not apply to S-LOC 17 Cats A and B. When local altimeter setting not received, procedure NA. Rwy 17 helicopter visibility reduction below ¼ SM NA. Circling Rwy 5, 35 NA at night. For inoperative MALSR, increase S-ILS 17 all Cats visibility to 1½ mile and WANUX fix minimums S-LOC 17 Cats A/B visibility to 1 mile and Cats C/D visibility to 1½ mile.

MALSR 
MISSED APPROACH: Climb to 5200 direct MPV VOR/DME and hold, continue climb-in-hold to 5200.

ASOS 132.675	BOSTON CENTER 135.7 282.2	UNICOM 122.8 (CTAF)
------------------------	-------------------------------------	-------------------------------



REGGI VGSi and ILS glidepath not coincident (VGSi Angle 3.00/TCH 46). I-MPV [18.5] JIPDO INT I-MPV [14.6] ZAXOL INT I-MPV [10.5] WANUX I-MPV [6.7] OAKEN I-MPV [2.5] *LOC only				
Use I-MPV DME when on the Localizer course.				
3.9 NM 4.2 NM 3.8 NM 4.2 NM 0.8 0.8				
CATEGORY	A	B	C	D
S-ILS 17	1486-¾ 351 (400-¾)			
S-LOC 17	2980-1¼ 1845 (1900-1¼)	2980-1½ 1845 (1900-1½)	2980-3	1845 (1900-3)
CIRCLING	2980-1¼ 1814 (1900-1¼)	2980-1½ 1814 (1900-1½)	2980-3	1814 (1900-3)
WANUX FIX MINIMUMS				
S-LOC 17	1660-¾ 525 (500-¾)	1660-1¼	525 (500-1¼)	
CIRCLING	1980-1¼ 814 (900-1¼)	2700-3 1534 (1600-3)	2920-3 1754 (1800-3)	

BARRE/MONTPELIER, VERMONT
Amdt 7C 14JUL22

44°12'N-72°34'W

EDWARD F KNAPP STATE (MPV)
ILS or LOC RWY 17

NE-1, 07 AUG 2025 to 04 SEP 2025

NE-1, 07 AUG 2025 to 04 SEP 2025