

(TAQLE.TAQLE2) 23278

AL-516 (FAA)

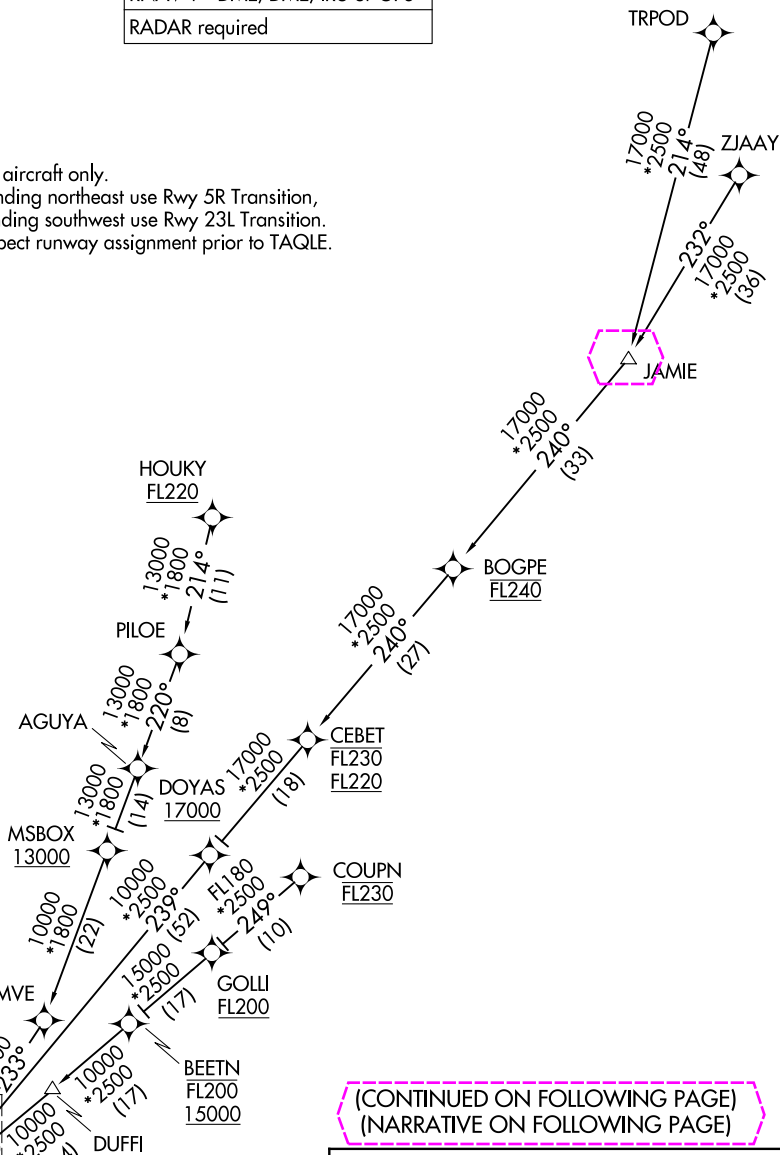
## TAQLE TWO ARRIVAL (RNAV) Transition Routes

RALEIGH-DURHAM INTL (RDU)  
RALEIGH/DURHAM, NORTH CAROLINARALEIGH APP CON  
124.95 318.2  
D-ATIS  
123.8

RNAV 1 - DME/DME/IRU or GPS

RADAR required

NOTE: Jet aircraft only.

NOTE: Landing northeast use Rwy 5R Transition,  
landing southwest use Rwy 23L Transition.  
Expect runway assignment prior to TAQLE.(CONTINUED ON FOLLOWING PAGE)  
(NARRATIVE ON FOLLOWING PAGE)BOGPE TRANSITION (BOGPE.TAQLE2)  
COUPN TRANSITION (COUPN.TAQLE2)  
HOUKY TRANSITION (HOUKY.TAQLE2)  
TRPOD TRANSITION (TRPOD.TAQLE2)  
ZJAAY TRANSITION (ZJAAY.TAQLE2)

NOTE: Chart not to scale.

TAQLE TWO ARRIVAL (RNAV) Transition Routes  
(TAQLE.TAQLE2) 05OCT23RALEIGH/DURHAM, NORTH CAROLINA  
RALEIGH-DURHAM INTL (RDU)

SE-2, 10 JUL 2025 to 07 AUG 2025

SE-2, 10 JUL 2025 to 07 AUG 2025

(TAQLE.TAQLE2) 25219

AL-516 (FAA)

RALEIGH-DURHAM INTL (RDU)  
RALEIGH/DURHAM, NORTH CAROLINA

# TAQLE TWO ARRIVAL (RNAV) Transition Routes

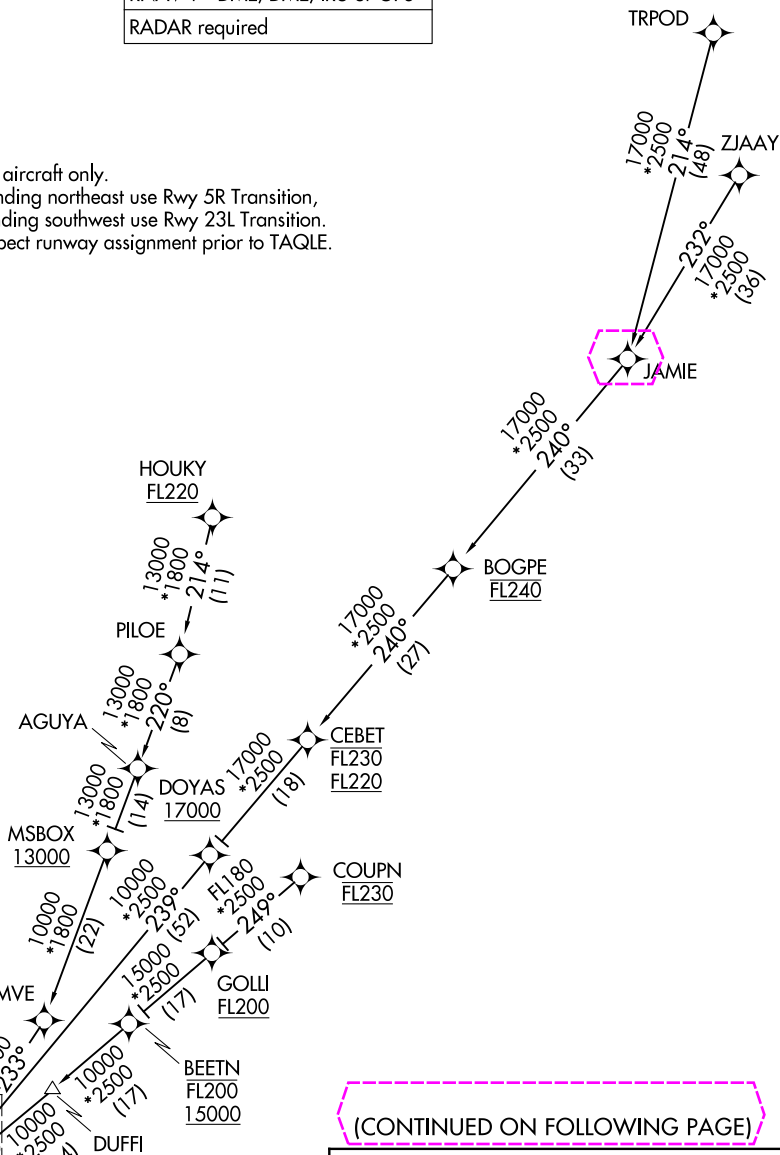
RALEIGH APP CON  
124.95 318.2  
D-ATIS  
123.8

RNAV 1 - DME/DME/IRU or GPS

RADAR required

NOTE: Jet aircraft only.

NOTE: Landing northeast use Rwy 5R Transition,  
landing southwest use Rwy 23L Transition.  
Expect runway assignment prior to TAQLE.



(CONTINUED ON FOLLOWING PAGE)

BOGPE TRANSITION (BOGPE.TAQLE2)  
COUPN TRANSITION (COUPN.TAQLE2)  
HOUKY TRANSITION (HOUKY.TAQLE2)  
TRPOD TRANSITION (TRPOD.TAQLE2)  
ZJAAY TRANSITION (ZJAAY.TAQLE2)

See following page  
for Arrival Routes

NOTE: Chart not to scale.

# TAQLE TWO ARRIVAL (RNAV) Transition Routes

(TAQLE.TAQLE2) 05OCT23

RALEIGH/DURHAM, NORTH CAROLINA  
RALEIGH-DURHAM INTL (RDU)

SE-2, 07 AUG 2025 to 04 SEP 2025

SE-2, 07 AUG 2025 to 04 SEP 2025