

RALEIGH/DURHAM, NORTH CAROLINA

AL-516 (FAA)

24361

| | | |
|--|------------------------|---|
| WAAS CH 90213 W05B | APP CRS 054° | Rwy Idg 7500 TDZE 420 Apt Elev 435 |
|--|------------------------|---|

RNAV (GPS) Y RWY 5R

RALEIGH-DURHAM INTL (RDU)

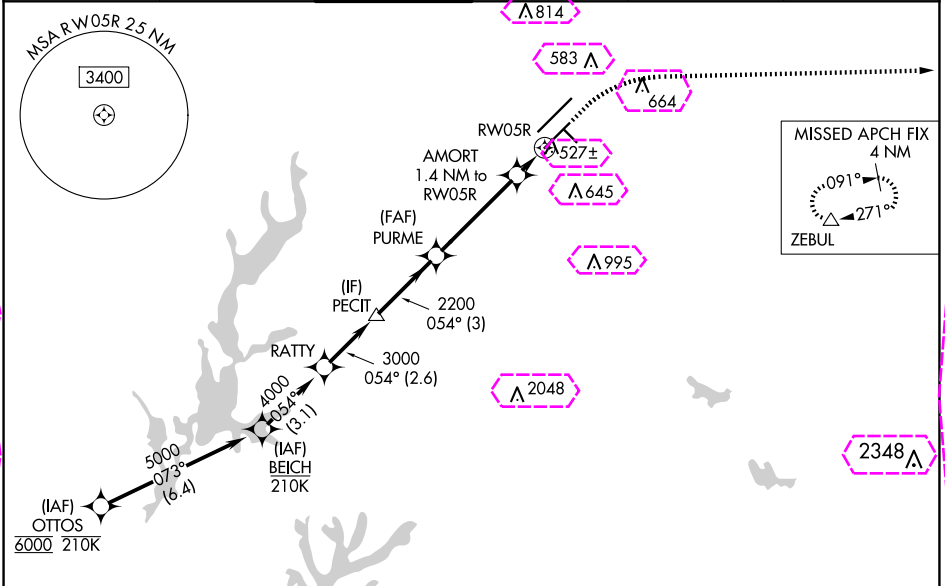
RNP APCH-GPS.

Simultaneous approach authorized. LNAV procedure NA during simultaneous operations.
For uncompensated Baro-VNAV systems, LNAV/VNAV NA below -12°C or above 54°C.
Use of FD or AP required during simultaneous operations. For inop ALS, increase LNAV/VNAV all Cats visibility to RVR 4500 and LNAV Cats C/D visibility to RVR 5500.
RVR 1800 authorized with use of FD or AP or HUD to DA.

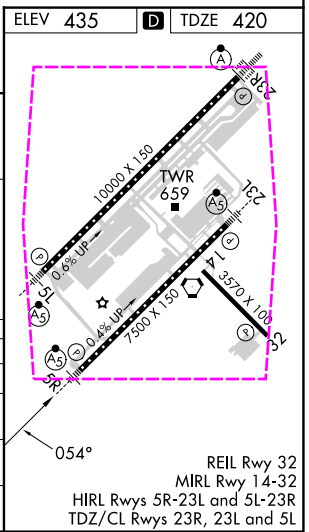
MALSRL

MISSED APPROACH:
Climb to 1000 then
climbing right turn to
2600 direct ZEBUL
and hold.

| | | | | | |
|------------------------|---|--------------------------------------|-------------------------------|--------------------------|-------|
| D-ATIS 123.8 | RALEIGH APP CON 127.675 307.9 | RALEIGH TOWER 127.45 257.8 | GND CON 121.9 348.6 | CLNC DEL 120.1 | CPDLC |
|------------------------|---|--------------------------------------|-------------------------------|--------------------------|-------|



| | | | | | | | | | | | |
|--------------|--|---------|--|-------------|--|---------|--|--------------|--|--------------|--|
| BEICH | | RATTY | | PECIT | | PURME | | AMORT | | RWY05R | |
| 5000 | | 4000 | | 3000 | | 2200 | | 2200 | | *900 | |
| GP 3.00° | | TCH 56 | | | | | | | | | |
| 3.1 NM | | 2.6 NM | | 3 NM | | 4.1 NM | | 1.4 NM | | | |
| CATEGORY | | A | | B | | C | | D | | | |
| LPV DA | | #620/24 | | 200 (200-½) | | | | | | | |
| LNAV/VNAV DA | | 688/24 | | 268 (300-½) | | | | | | | |
| LNAV MDA | | 780/24 | | 360 (400-½) | | 780/40 | | 360 (400-¾) | | | |
| CIRCLING | | 960-1 | | 525 (600-1) | | 1020-1½ | | 585 (600-1½) | | 1180-2½ | |
| | | | | | | | | | | 745 (800-2½) | |



RALEIGH/DURHAM, NORTH CAROLINA

AL-516 (FAA)

25219

| | | |
|--|------------------------|---|
| WAAS CH 90213 W05B | APP CRS 054° | Rwy Ldg 7500 TDZE 420 Apt Elev 435 |
|--|------------------------|---|

RNAV (GPS) Y RWY 5R

RALEIGH-DURHAM INTL (RDU)

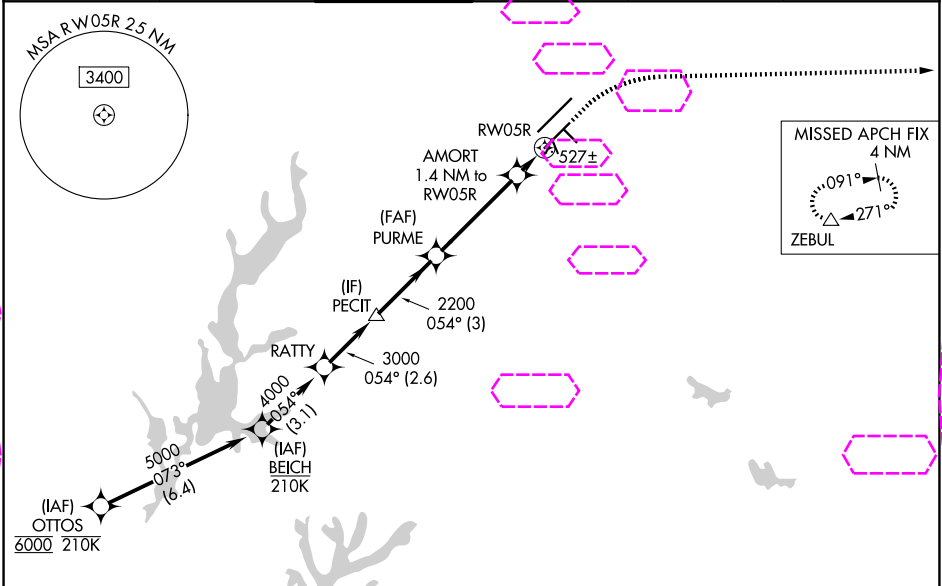
RNP APCH-GPS.


Simultaneous approach authorized. LNAV procedure NA during simultaneous operations. For uncompensated Baro-VNAV systems, LNAV/VNAV NA below -12°C or above 54°C. Use of FD or AP required during simultaneous operations. For inop ALS, increase LNAV/VNAV all Cats visibility to RVR 4500 and LNAV Cats C/D visibility to RVR 5500. # RVR 1800 authorized with use of FD or AP or HUD to DA.

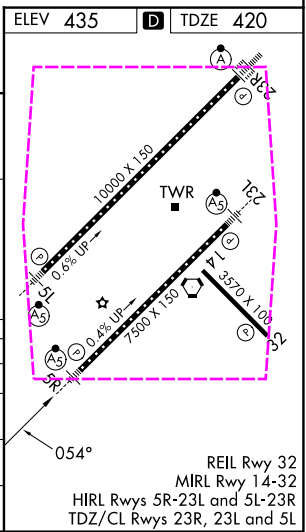
MALSR

MISSED APPROACH: Climb to 1000 then climbing right turn to 2600 direct ZEBUL and hold.

| | | | | | |
|------------------------|---|--------------------------------------|-------------------------------|--------------------------|-------|
| D-ATIS 123.8 | RALEIGH APP CON 127.675 307.9 | RALEIGH TOWER 127.45 257.8 | GND CON 121.9 348.6 | CLNC DEL 120.1 | CPDLC |
|------------------------|---|--------------------------------------|-------------------------------|--------------------------|-------|



| | | | | | | | | | | | |
|--------------------|--|---|--|-------------|--|---|--|------------------------------|--|-------------|--|
| | | VGSI and RNAV glidepath not coincident (VGSI Angle 3.00/TCH 62). | | 1000 ↑ | | 2600  | | ZEBUL △ | | | |
| BEICH | | RATTY | | PECIT | | PURME | | AMORT 1.4 NM to RWY05R | | *LNAV only. | |
| 5000 | | 054° | | 4000 | | 3000 | | 2200 | | *900 | |
| GP 3.00° TCH 56 | | | | | | | | | | | |
| | | 3.1 NM | | 2.6 NM | | 3 NM | | 4.1 NM | | 1.4 NM | |
| CATEGORY | | A | | B | | C | | D | | | |
| LPV DA | | #620/24 | | 200 (200-½) | | | | | | | |
| LNAV/ VNAV DA | | 688/24 | | 268 (300-½) | | | | | | | |
| LNAV MDA | | 780/24 | | 360 (400-½) | | 780/40 | | 360 (400-¾) | | | |
| CIRCLING | | 960-1 | | 525 (600-1) | | 1020-1½ 585 (600-1½) | | 1180-2½ 745 (800-2½) | | | |



SE-2, 07 AUG 2025 to 04 SEP 2025

SE-2, 07 AUG 2025 to 04 SEP 2025