

RALEIGH/DURHAM, NORTH CAROLINA

AL-516 (FAA)

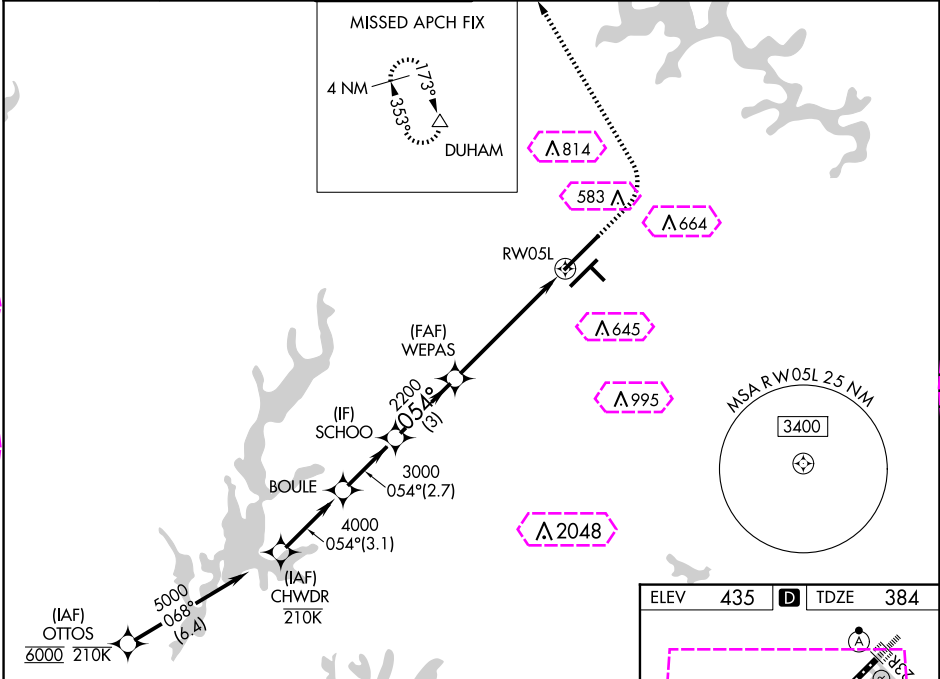
24361

WAAS CH <b>48813</b> <b>W05A</b>	APP CRS <b>054°</b>	Rwy Idg <b>10000</b> TDZE <b>384</b> Apt Elev <b>435</b>
--	------------------------	--

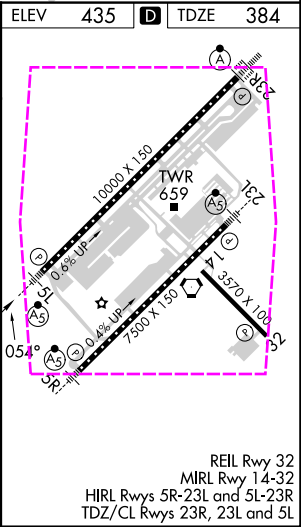
**RNAV (GPS) Y RWY 5L**  
RALEIGH-DURHAM INTL (RDU)

RNP APCH-GPS. <div><div>Simultaneous approach authorized. LNAV procedure NA during simultaneous operations. For uncompensated Baro-VNAV systems, LNAV/VNAV NA below -12°C or above 54°C. For inop ALS, increase LNAV/VNAV all Cats visibility to RVR 5500. Use of FD or AP required during simultaneous operations.</div><div>MALSR<div></div>MISSED APPROACH: Climb to 1000 then climbing left turn to 2200 direct DUHAM and hold.</div></div>		
--	--	--

D-ATIS <b>123.8</b>	RALEIGH APP CON <b>127.675 307.9</b>	RALEIGH TOWER <b>127.45 257.8</b>	GND CON <b>121.9 348.6</b>	CLNC DEL <b>120.1</b>	CPDLC
------------------------	---	--------------------------------------	-------------------------------	--------------------------	-------



VGSI and RNAV glidepath not coincident (VGSI Angle 3.00/TCH 72).				
CHWDR				
BOULE				
SCHOO				
WEPAS				
RW05L				
GP 3.00° TCH 57				
5000				
4000				
3000				
2200				
1.3 NM to RW05L				
*LNAV only.				
3.1 NM				
2.7 NM				
3 NM				
4.3 NM				
1.3 NM				
CATEGORY	A	B	C	D
LPV DA	598/18		214 (200-½)	
LNAV/VNAV DA	748/35		364 (400-¾)	
LNAV MDA	840/24	456 (500-½)	840/45	456 (500-¾)
CIRCLING	960-1	525 (600-1)	1020-1½ 585 (600-1½)	1180-2½ 745 (800-2½)



RALEIGH/DURHAM, NORTH CAROLINA

AL-516 (FAA)

25219


WAAS CH <b>48813</b> <b>W05A</b>	APP CRS <b>054°</b>	Rwy Ldg TDZE <b>384</b> Apt Elev <b>435</b>
--	------------------------	---

**RNAV (GPS) Y RWY 5L**  
RALEIGH-DURHAM INTL (RDU)

RNP APCH-GPS.

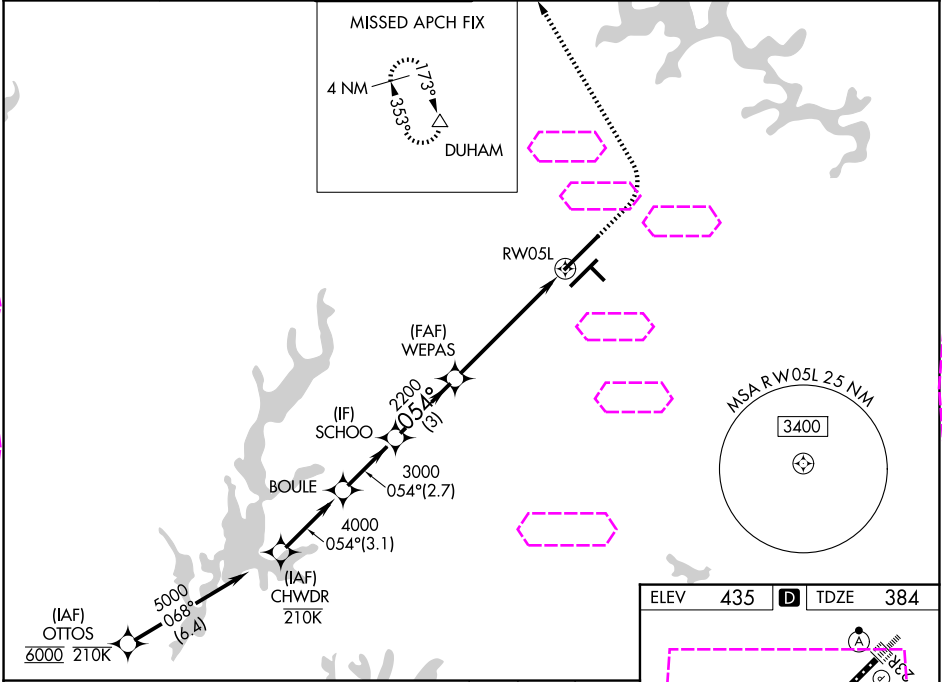
Simultaneous approach authorized. LNAV procedure NA during simultaneous operations. For uncompensated Baro-VNAV systems, LNAV/VNAV NA below -12°C or above 54°C. For inop ALS, increase LNAV/VNAV all Cats visibility to RVR 5500. Use of FD or AP required during simultaneous operations.


MALSR



MISSED APPROACH: Climb to 1000 then climbing left turn to 2200 direct DUHAM and hold.

D-ATIS <b>123.8</b>	RALEIGH APP CON <b>127.675 307.9</b>	RALEIGH TOWER <b>127.45 257.8</b>	GND CON <b>121.9 348.6</b>	CLNC DEL <b>120.1</b>	CPDLC
------------------------	---	--------------------------------------	-------------------------------	--------------------------	-------



VGSI and RNAV glidepath not coincident (VGSI Angle 3.00/TCH 72).																													
																													
*LNAV only.																													
<table><tr><td>CHWDR</td><td>BOULE</td><td>SCHOO</td><td>WEPAS</td><td>RW05L</td></tr><tr><td>5000</td><td>4000</td><td>3000</td><td>2200</td><td>2200</td></tr><tr><td>GP 3.00°</td><td>054°</td><td></td><td></td><td></td></tr><tr><td>TCH 57</td><td></td><td></td><td></td><td></td></tr><tr><td>3.1 NM</td><td>2.7 NM</td><td>3 NM</td><td>4.3 NM</td><td>1.3 NM</td></tr></table>					CHWDR	BOULE	SCHOO	WEPAS	RW05L	5000	4000	3000	2200	2200	GP 3.00°	054°				TCH 57					3.1 NM	2.7 NM	3 NM	4.3 NM	1.3 NM
CHWDR	BOULE	SCHOO	WEPAS	RW05L																									
5000	4000	3000	2200	2200																									
GP 3.00°	054°																												
TCH 57																													
3.1 NM	2.7 NM	3 NM	4.3 NM	1.3 NM																									
CATEGORY	A	B	C	D																									
LPV DA		598/18	214 (200-½)																										
LNAV/VNAV DA		748/35	364 (400-¾)																										
LNAV MDA	840/24	456 (500-½)	840/45	456 (500-¾)																									
CIRCLING	960-1	525 (600-1)	1020-1½ 585 (600-½)	1180-2½ 745 (800-2½)																									

