

RALEIGH/DURHAM, NORTH CAROLINA

AL-516 (FAA)

24361

WAAS CH 45613 W23A	APP CRS 234°	Rwy Idg 10000 TDZE 409 Apt Elev 435
--	------------------------	--

RNAV (GPS) Y RWY 23R

RALEIGH-DURHAM INTL (RDU)

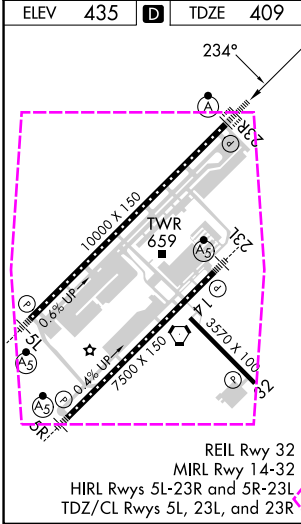
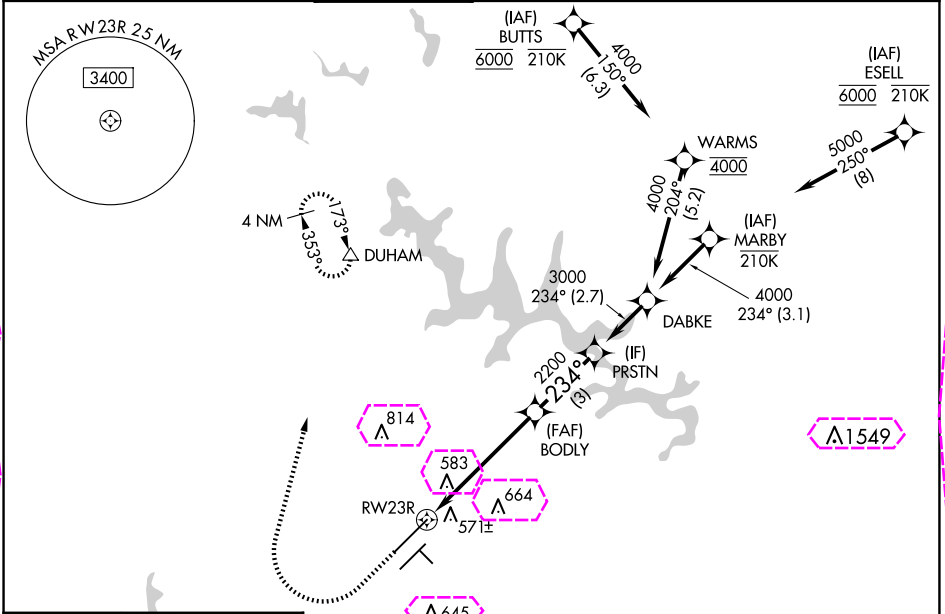
RNP APCH - GPS

Simultaneous approach authorized. LNAV procedure NA during simultaneous operations.
Use of FD or AP providing RNAV track guidance required during simultaneous operations.
For uncompensated Baro-VNAV systems, LNAV/VNAV NA below -12°C or above 54°C.
For inop ALS, increase LNAV/VNAV all Cats visibility to RVR 6000 and LNAV Cat C/D visibility to 1½ NM.

ALSF-2

MISSED APPROACH: Climb to 1000 then climbing right turn to 2200 direct DUHAM and hold.

D-ATIS 123.8	RALEIGH APP CON 127.675 307.9	RALEIGH TOWER 127.45 257.8	GND CON 121.9 348.6	CINC DEL 120.1	CPDLC
------------------------	---	--------------------------------------	-------------------------------	--------------------------	-------



1000	2200	DUHAM	VGSI and RNAV glidepath not coincident (VGSI Angle 3.00/TCH 69).			
			BODY	PRSTN	DABKE	MARBY
			1.6 NM to RW23R	2200	3000	5000
			1.6 NM	3.9 NM	3 NM	2.7 NM
			3.1 NM			
CATEGORY	A	B	C	D		
LPV DA	609/18		200 (200-½)			
LNAV/VNAV DA	826/40		417 (400-¾)			
LNAV MDA	980/24	571 (600-½)	980-1¼	571 (600-1¼)		
CIRCLING	980-1	545 (600-1)	1020-1½ 585 (600-1½)	1180-2½ 745 (800-2½)		

SE-2, 10 JUL 2025 to 07 AUG 2025

SE-2, 10 JUL 2025 to 07 AUG 2025

WAAS CH 45613 W23A	APP CRS 234°	Rwy Ldg 10000 TDZE 409 Apt Elev 435
--	------------------------	--

RNAV (GPS) Y RWY 23R

RALEIGH-DURHAM INTL (RDU)

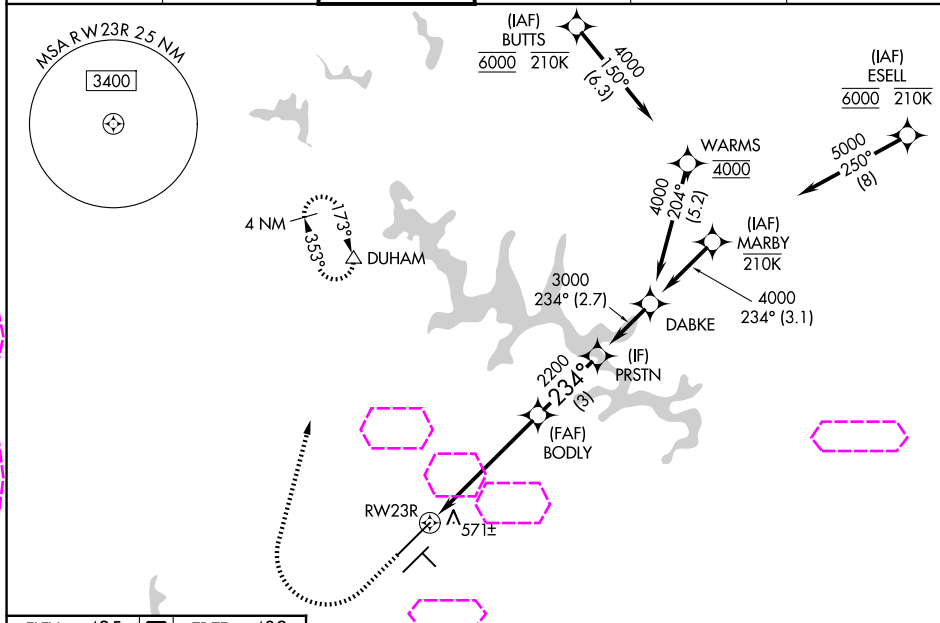
RNP APCH - GPS.

A For uncompensated Baro-VNAV systems, LNAV/VNAV NA below -12°C or above 54°C. For inop ALS, increase LNAV/VNAV all Cats visibility to RVR 6000 and LNAV Cat C/D visibility to 1½ NM.

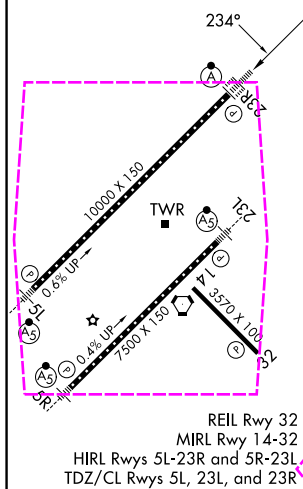
ALSF-2

MISSED APPROACH: Climb to 1000 then climbing right turn to 2200 direct DUHAM and hold.

D-ATIS 123.8	RALEIGH APP CON 127.675 307.9	RALEIGH TOWER 127.45 257.8	GND CON 121.9 348.6	CLNC DEL 120.1	CPDLC
-----------------	----------------------------------	-------------------------------	------------------------	-------------------	-------



ELEV	435	D	TDZE	409
------	-----	----------	------	-----



CATEGORY	A	B	C	D
LPV DA	609/18	200 (200-½)		
LNAV/VNAV DA	826/40	417 (400-¾)		
LNAV MDA	980/24	571 (600-½)	980-1¼	571 (600-1¼)
CIRCLING	980-1	545 (600-1)	1020-1½ 585 (600-1½)	1180-2½ 745 (800-2½)

RALEIGH/DURHAM, NORTH CAROLINA

Amdt 2A 26DEC24

35°53'N-78°47'W

RALEIGH-DURHAM INTL (RDU)

RNAV (GPS) Y RWY 23R

SE-2, 07 AUG 2025 to 04 SEP 2025