

RNAV (GPS) Y RWY 23L  
RALEIGH-DURHAM INTL (RDU)

**MISSED APPROACH:**  
Climb to 1100 then  
climbing left turn to  
2600 direct ZEBUL  
and hold.



RALEIGH-DURHAM INTL (RDU)  
RNAV (GPS) Y RWY 23L

RALEIGH/DURHAM, NORTH CAROLINA

AL-516 (FAA)

25219

WAAS CH <b>65713</b> <b>W23B</b>	APP CRS <b>234°</b>	Rwy Ldg TDZE <b>435</b> Apt Elev <b>435</b>
--	------------------------	---

RNAV (GPS) Y RWY 23L

RALEIGH-DURHAM INTL (RDU)

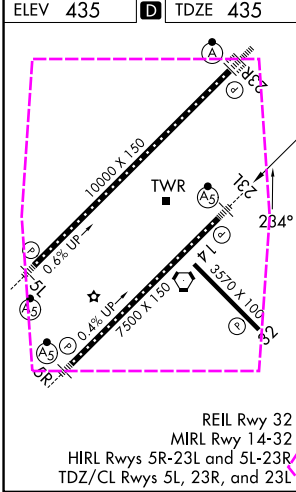
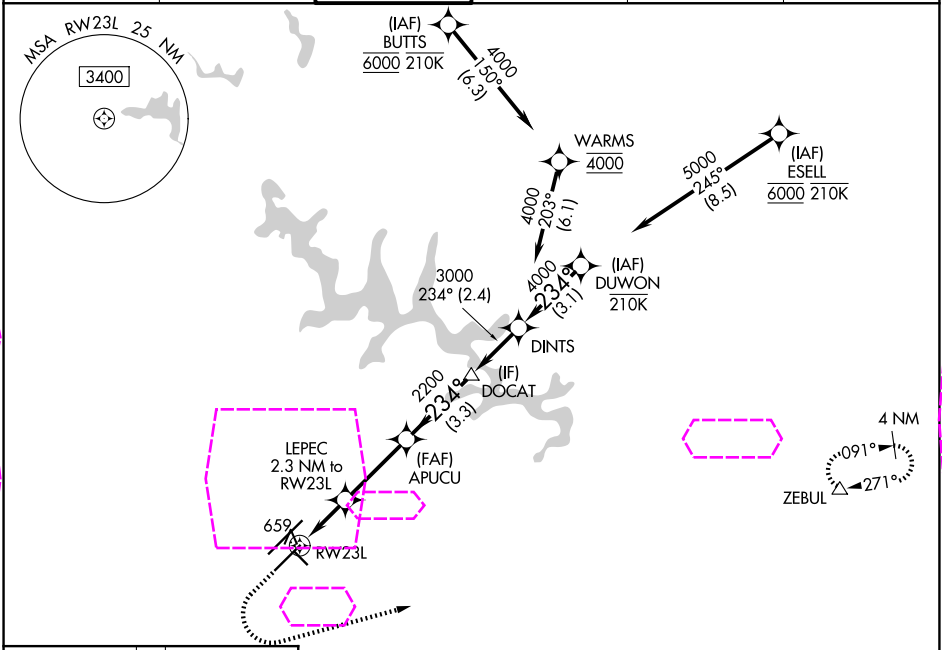
RNP APCH-GPS.

Simultaneous approach authorized. LNAV procedure NA during simultaneous operations. For uncompensated Baro-VNAV systems, LNAV/VNAV NA below -1.2°C or above 54°C. Use of FD or AP required during simultaneous operations. For inop ALS, increase LNAV Cat C/D visibility to 1 3/8 SM.

MALSR

MISSED APPROACH: Climb to 1100 then climbing left turn to 2600 direct ZEBUL and hold.

D-ATIS <b>123.8</b>	RALEIGH APP CON <b>127.675 307.9</b>	RALEIGH TOWER <b>127.45 257.8</b>	GND CON <b>121.9 348.6</b>	CINC DEL <b>120.1</b>	CPDLC
------------------------	---	--------------------------------------	-------------------------------	--------------------------	-------



ELEV 435	TDZE 435	1100	2600	ZEBUL
* LNAV only.				
CATEGORY	A	B	C	D
LPV DA	635/18		200 (200-1/2)	
LNAV/VNAV DA	820/35		385 (400-5/8)	
LNAV MDA	920/24		485 (500-1/2)	920/50 485 (500-1)
CIRCLING	960-1		525 (600-1)	1020-1 1/2 585 (600-1 1/2) 1180-2 1/2 745 (800-2 1/2)