

RALEIGH/DURHAM, NORTH CAROLINA

AL-516 (FAA)

24361

APP CRS	Rwy Idg	7500
054°	TDZE	420
	Apt Elev	435

RNAV (RNP) Z RWY 5R

RALEIGH-DURHAM INTL (RDU)

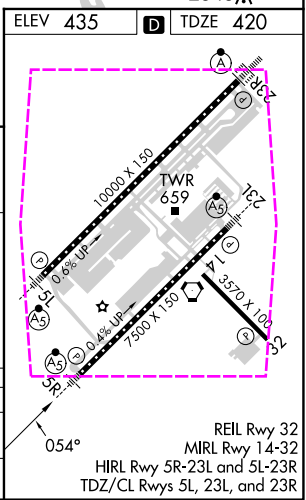
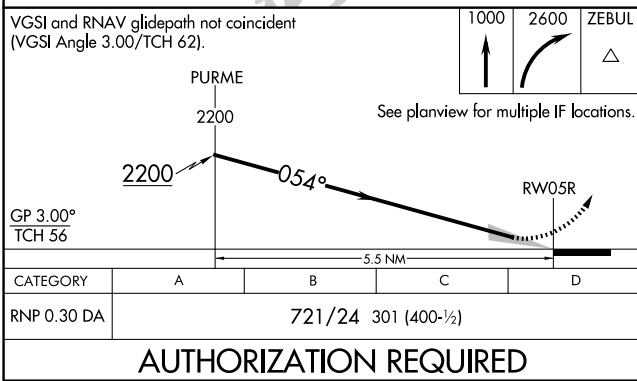
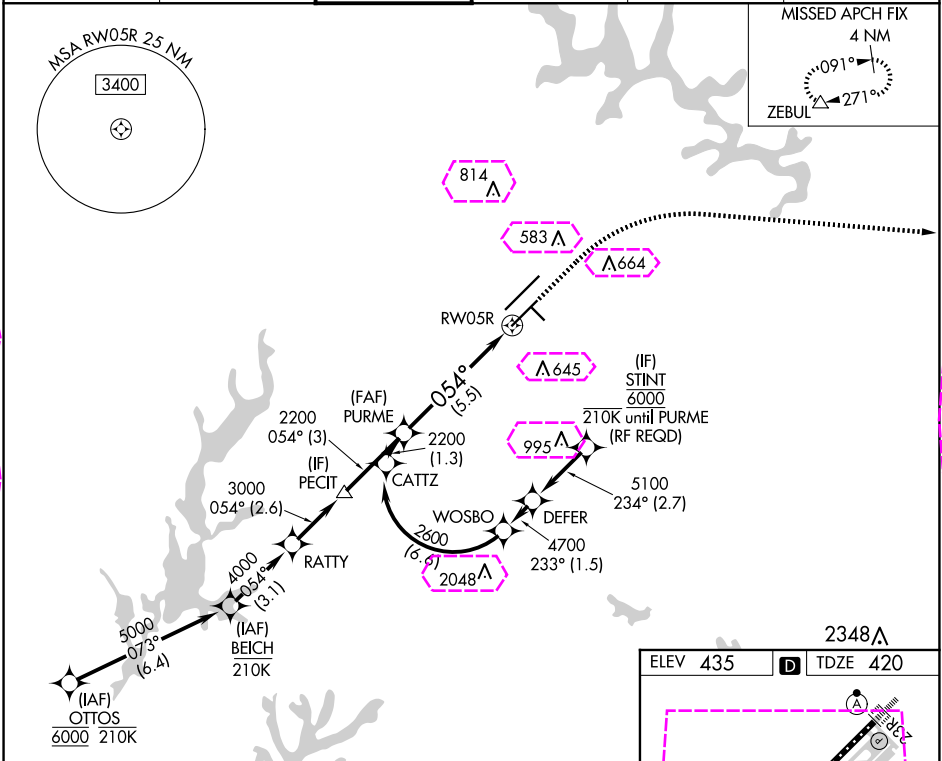
RNP AR APCH-GPS.

For uncompensated Baro-VNAV systems, procedure NA below -12°C or above 54°C.
For inop ALS, increase RNP 0.30 all Cats visibility to RVR 4500. Simultaneous approach authorized, except for arrivals at STINT.



MISSED APPROACH: Climb to 1000 then climbing right turn to 2600 direct ZEBUL and hold.

D-ATIS	RALEIGH APP CON	RALEIGH TOWER	GND CON	CLNC DEL	CPDLC
123.8	127.675 307.9	127.45 257.8	121.9 348.6	120.1	



SE-2, 10 JUL 2025 to 07 AUG 2025

SE-2, 10 JUL 2025 to 07 AUG 2025

RALEIGH/DURHAM, NORTH CAROLINA

AL-516 (FAA)

25219

APP CRS	Rwy Ldg	7500
054°	TDZE	420
	Apt Elev	435

RNAV (RNP) Z RWY 5R

RALEIGH-DURHAM INTL (RDU)

RNP AR APCH-GPS.

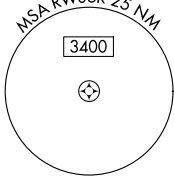
For uncompensated Baro-VNAV systems, procedure NA below -12°C or above 54°C.
For inop ALS, increase RNP 0.30 all Cats visibility to RVR 4500. Simultaneous approach authorized, except for arrivals at STINT.

MALSR

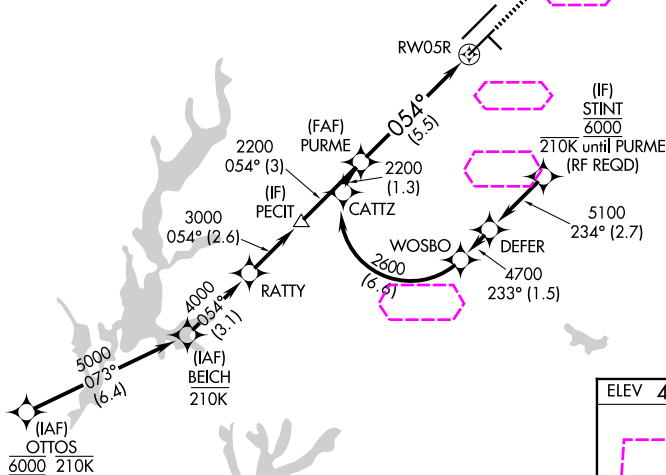
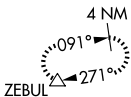


MISSED APPROACH: Climb to 1000 then climbing right turn to 2600 direct ZEBUL and hold.

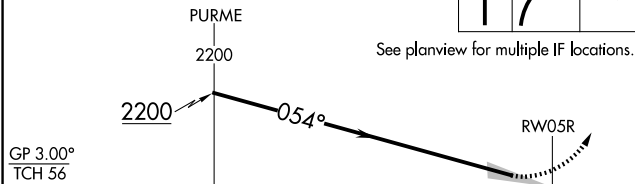
D-ATIS	RALEIGH APP CON	RALEIGH TOWER	GND CON	CLNC DEL	CPDLC
123.8	127.675 307.9	127.45 257.8	121.9 348.6	120.1	



MISSED APCH FIX

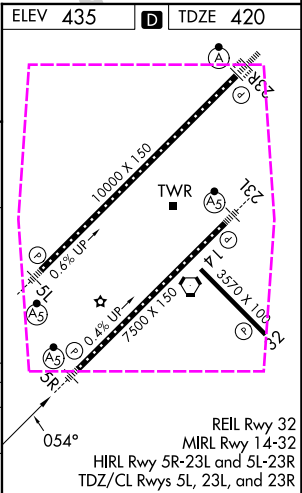


VGSI and RNAV glidepath not coincident
(VGSI Angle 3.00/TCH 62).



CATEGORY	A	B	C	D
RNP 0.30 DA	721/24 301 (400-½)			

AUTHORIZATION REQUIRED



RALEIGH/DURHAM, NORTH CAROLINA
Amdt 3A 26DEC24

35°53'N-78°47'W

RALEIGH-DURHAM INTL (RDU)

RNAV (RNP) Z RWY 5R

SE-2, 07 AUG 2025 to 04 SEP 2025

SE-2, 07 AUG 2025 to 04 SEP 2025