

RALEIGH/DURHAM, NORTH CAROLINA

AL-516 (FAA)

24361

APP CRS	Rwy Idg	10000
054°	TDZE	384
	Apt Elev	435

# RNAV (RNP) Z RWY 5L

RALEIGH-DURHAM INTL (RDU)

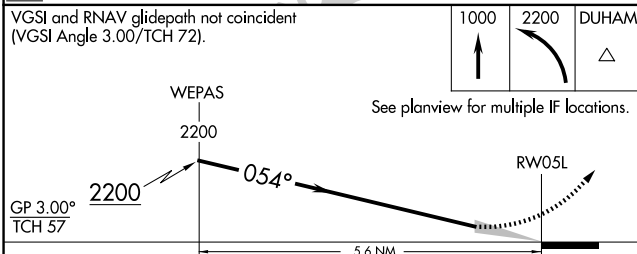
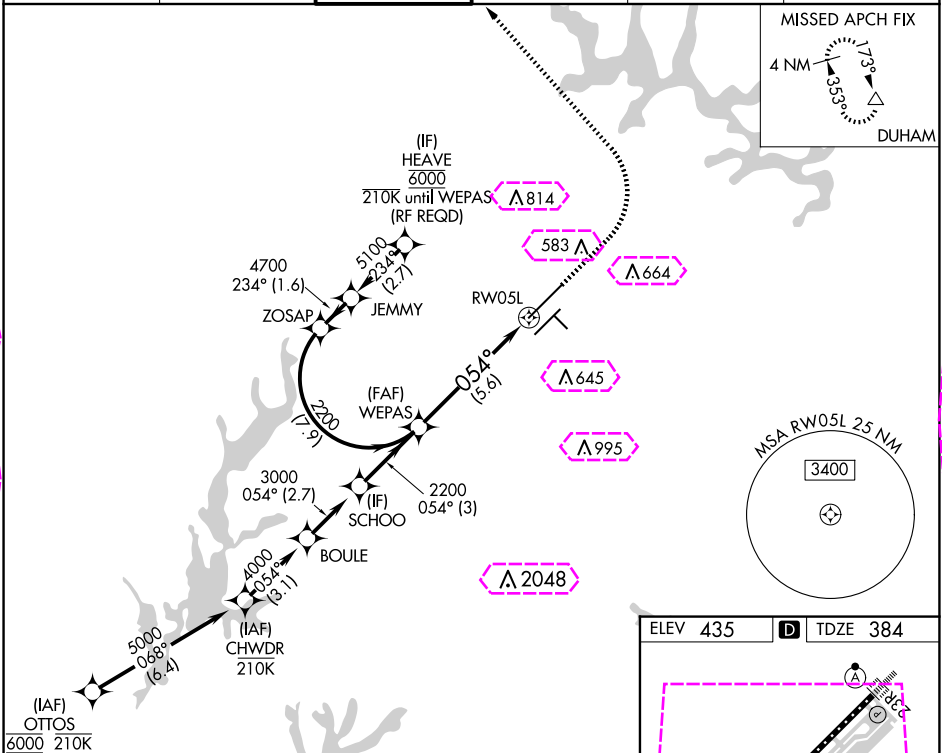
RNP AR APCH-GPS.

▼ For uncompensated Baro-VNAV systems, procedure NA below -12°C or above 54°C. Simultaneous approach authorized, except for arrivals at HEAVE. For inop ALS, increase RNP 0.10 all Cats visibility to RVR 4500.

MALSR  
AS

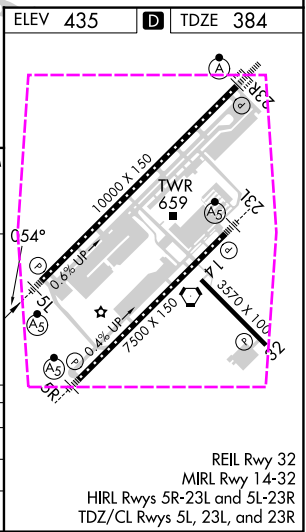
MISSED APPROACH:  
Climb to 1000 then  
climbing left turn to 2200  
direct DUHAM and hold.

D-ATIS 123.8	RALEIGH APP CON 127.675 307.9	RALEIGH TOWER 127.45 257.8	GND CON 121.9 348.6	CLNC DEL 120.1	CPDLC
-----------------	----------------------------------	-------------------------------	------------------------	-------------------	-------



CATEGORY	A	B	C	D
RNP 0.10 DA		684/24	300 (300-½)	
RNP 0.30 DA		780/35	396 (400-⅝)	

**AUTHORIZATION REQUIRED**



SE-2, 10 JUL 2025 to 07 AUG 2025

SE-2, 10 JUL 2025 to 07 AUG 2025

RALEIGH/DURHAM, NORTH CAROLINA

AL-516 (FAA)

25219

APP CRS	Rwy Ldg	10000
054°	TDZE	384
	Apt Elev	435

# RNAV (RNP) Z RWY 5L

RALEIGH-DURHAM INTL (RDU)

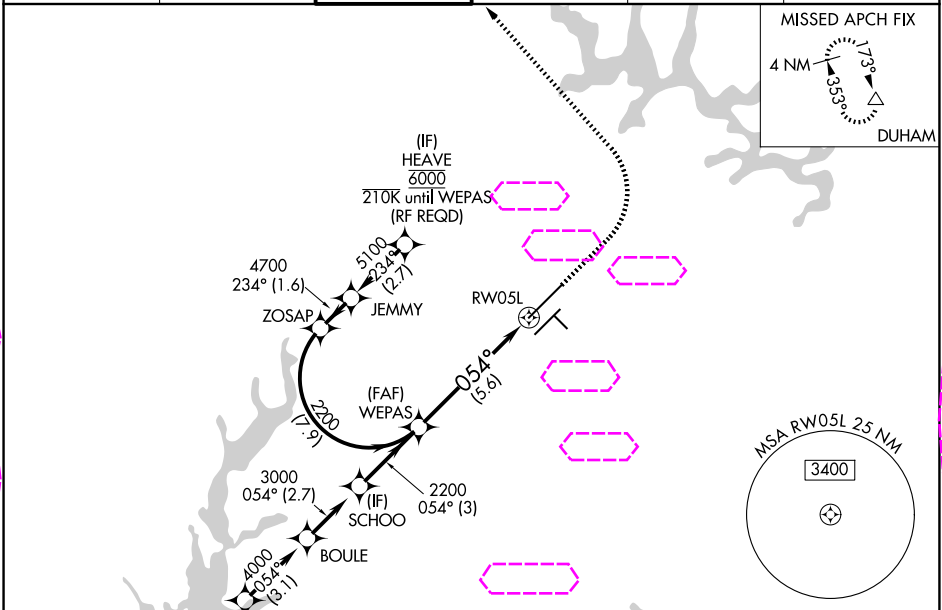
RNP AR APCH-GPS.

▼ For uncompensated Baro-VNAV systems, procedure NA below -12°C or above 54°C. Simultaneous approach authorized, except for arrivals at HEAVE. For inop ALS, increase RNP 0.10 all Cats visibility to RVR 4500.

MALSR  
AS

MISSED APPROACH:  
Climb to 1000 then  
climbing left turn to 2200  
direct DUHAM and hold.

D-ATIS 123.8	RALEIGH APP CON 127.675 307.9	RALEIGH TOWER 127.45 257.8	GND CON 121.9 348.6	CLNC DEL 120.1	CPDLC
-----------------	----------------------------------	-------------------------------	------------------------	-------------------	-------



VGSI and RNAV glidepath not coincident (VGSI Angle 3.00/TCH 72).

1000 2200 DUHAM

See planview for multiple IF locations.

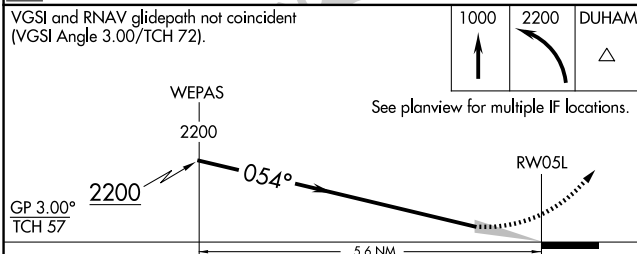
WEPAS 2200

GP 3.00° TCH 57

2200 054°

RW05L

5.6 NM



CATEGORY	A	B	C	D
RNP 0.10 DA		684/24	300 (300-½)	
RNP 0.30 DA		780/35	396 (400-⅝)	

**AUTHORIZATION REQUIRED**

ELEV 435 D TDZE 384

REIL Rwy 32  
MIRL Rwy 14-32  
HIRL Rws 5R-23L and 5L-23R  
TDZ/CL Rws 5L, 23L, and 23R

SE-2, 07 AUG 2025 to 04 SEP 2025

SE-2, 07 AUG 2025 to 04 SEP 2025