

RALEIGH/DURHAM, NORTH CAROLINA

AL-516 (FAA)

24361

APP CRS	Rwy Idg	10000
234°	TDZE	409
	Apt Elev	435

# RNAV (RNP) Z RWY 23R

RALEIGH-DURHAM INTL (RDU)

RNP AR APCH-GPS.

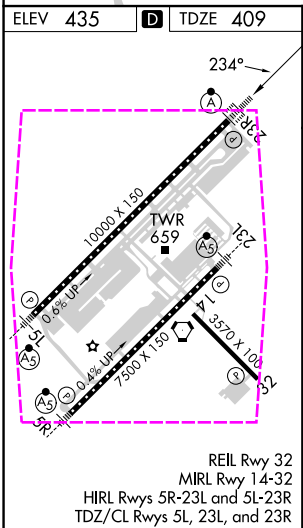
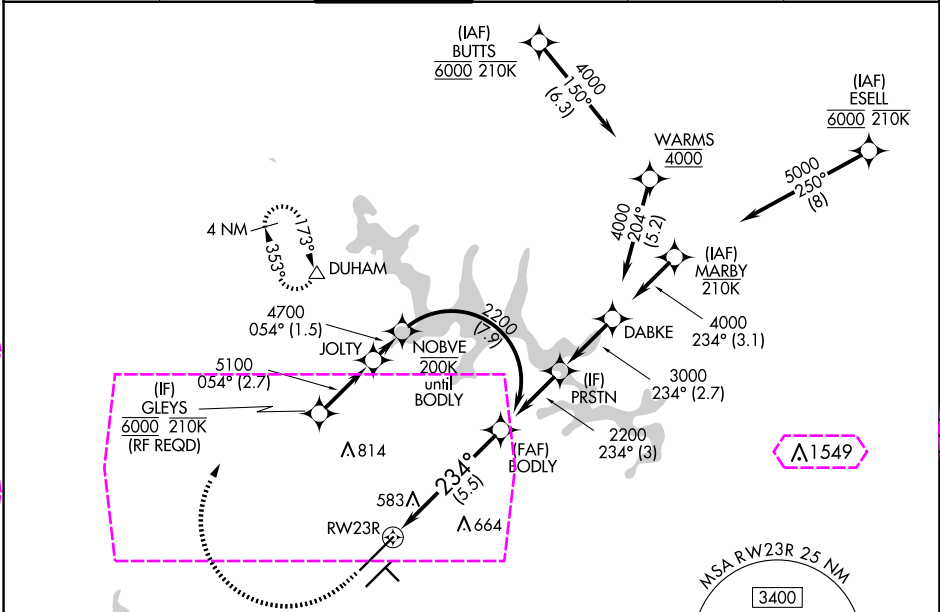
For uncompensated Baro-VNAV systems, procedure NA below -12°C or above 54°C.  
For inop ALS, increase RNP 0.15 all Cats visibility to RVR 5500, increase RNP 0.30 all  
Cats visibility to 1% SM. Simultaneous approach authorized except for arrivals at GLEYS.


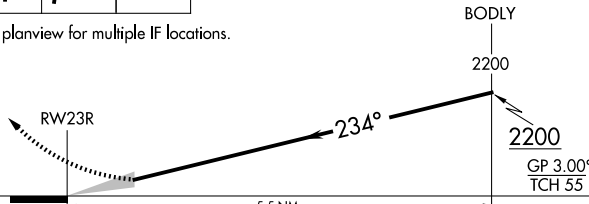
ALSF-2



MISSED APPROACH: Climb to 1000 then climbing right turn to 2200 direct DUHAM and hold.

D-ATIS 123.8	RALEIGH APP CON 127.675 307.9	RALEIGH TOWER 127.45 257.8	GND CON 121.9 348.6	CLNC DEL 120.1	CPDLC
-----------------	----------------------------------	-------------------------------	------------------------	-------------------	-------



1000	2200	DUHAM	VGSI and RNAV glidepath not coincident (VGSI Angle 3.00/TCH 69).	
↑		△		
See planview for multiple IF locations.				
				
CATEGORY	A	B	C	D
RNP 0.15 DA	760/30 351 (400-5%)			
RNP 0.30 DA	910/55 501 (500-1)			
AUTHORIZATION REQUIRED				

AUTHORIZATION REQUIRED

RALEIGH/DURHAM, NORTH CAROLINA

AL-516 (FAA)

25219

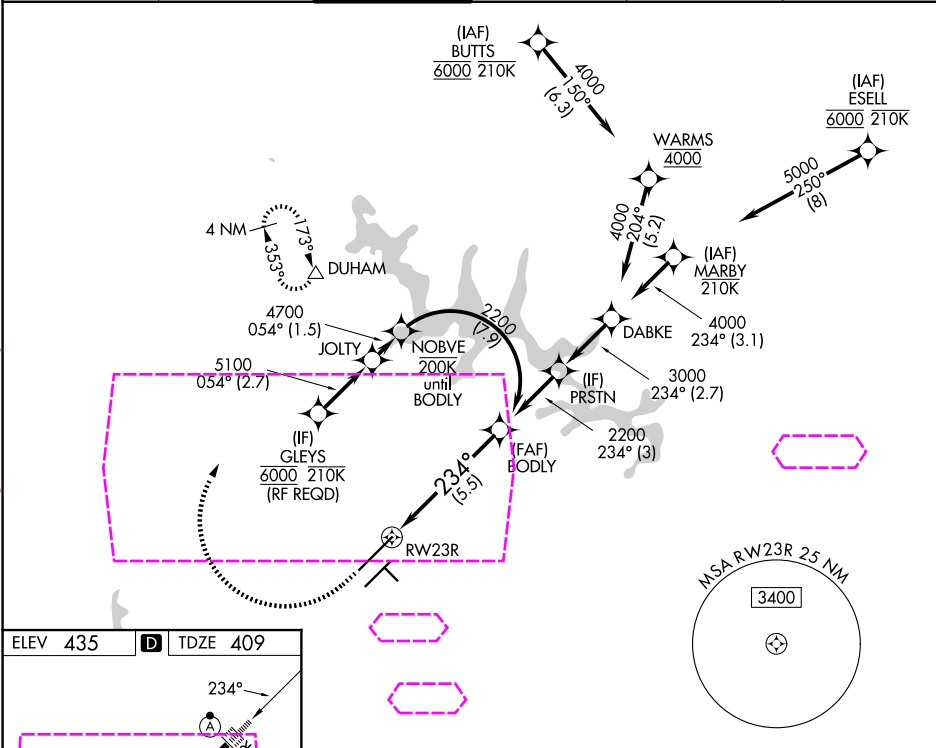
APP CRS <b>234°</b>	Rwy Ldg <b>10000</b> TDZE <b>409</b> Apt Elev <b>435</b>
------------------------	--

# RNAV (RNP) Z RWY 23R

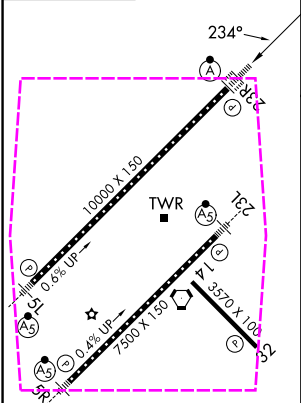
RALEIGH-DURHAM INTL (RDU)

RNP AR APCH-GPS.	ALSF-2 	MISSED APPROACH: Climb to 1000 then climbing right turn to 2200 direct DUHAM and hold.
------------------	------------	--

D-ATIS <b>123.8</b>	RALEIGH APP CON <b>127.675 307.9</b>	RALEIGH TOWER <b>127.45 257.8</b>	GND CON <b>121.9 348.6</b>	CLNC DEL <b>120.1</b>	CPDLC
------------------------	---	--------------------------------------	-------------------------------	--------------------------	-------

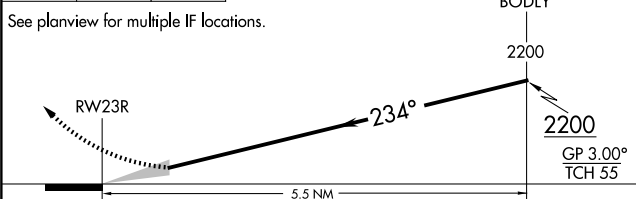


ELEV 435	<b>D</b>	TDZE 409
----------	----------	----------



REIL Rwy 32  
MIRL Rwy 14-32  
HIRL Rwys 5R-23L and 5L-23R  
TDZ/CL Rwys 5L, 23L, and 23R

1000	2200	DUHAM	VGSI and RNAV glidepath not coincident (VGSI Angle 3.00°/TCH 69°).
------	------	-------	--



CATEGORY	A	B	C	D
RNP 0.15 DA		760/30	351 (400-5%)	
RNP 0.30 DA		910/55	501 (500-1)	

**AUTHORIZATION REQUIRED**

SE-2, 07 AUG 2025 to 04 SEP 2025

SE-2, 07 AUG 2025 to 04 SEP 2025