

RALEIGH/DURHAM, NORTH CAROLINA

AL-516 (FAA)

24361

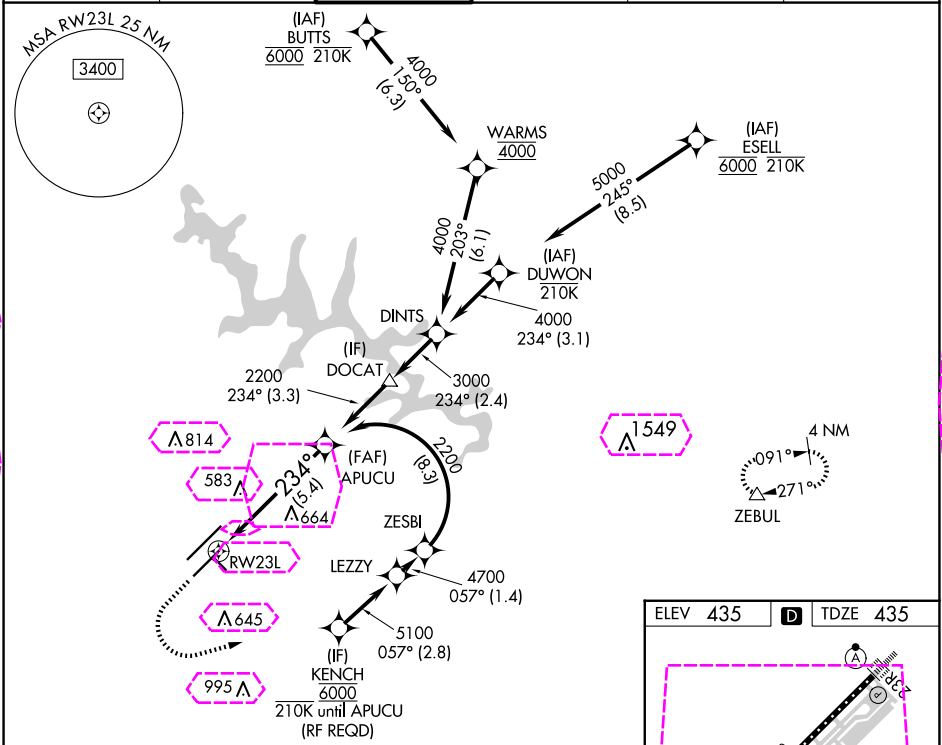
APP CRS	Rwy Idg	7500
234°	TDZE	435
	Apt Elev	435

RNAV (RNP) Z RWY 23L

RALEIGH-DURHAM INTL (RDU)

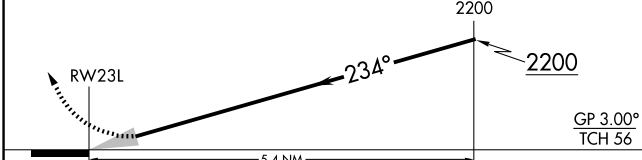
RNP AR APCH-GPS.	MALSR	MISSED APPROACH: Climb to 1100 then climbing left turn to 2600 direct ZEBUL and hold.
▼ For uncompensated Baro-VNAV systems, procedure NA below -12°C or above 54°C. Simultaneous approach authorized, except for arrivals at KENCH. For inop ALS, increase RNP 0.10 all Cats visibility to RVR 5500.		

D-ATIS	RALEIGH APP CON	RALEIGH TOWER	GND CON	CLNC DEL	CPDLC
123.8	127.675 307.9	127.45 257.8	121.9 348.6	120.1	



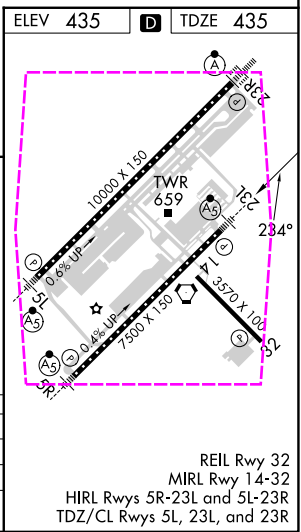
1100	2600	ZEBUL

See planview for multiple IF locations.



CATEGORY	A	B	C	D
RNP 0.10 DA		776/30 341 (400-%)		
RNP 0.30 DA		826/35 391 (400-%)		

AUTHORIZATION REQUIRED



RALEIGH/DURHAM, NORTH CAROLINA

AL-516 (FAA)

25219

APP CRS	Rwy Ldg	7500
234°	TDZE	435
	Apt Elev	435

RNAV (RNP) Z RWY 23L

RALEIGH-DURHAM INTL (RDU)

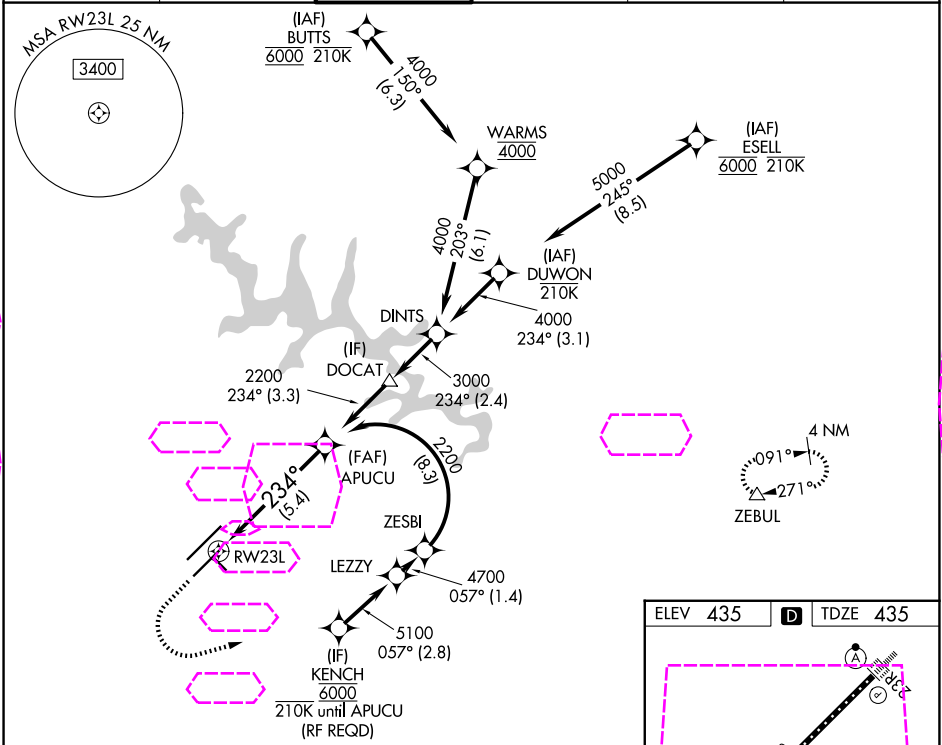
RNP AR APCH-GPS.

For uncompensated Baro-VNAV systems, procedure NA below -12°C or above 54°C. Simultaneous approach authorized, except for arrivals at KENCH. For inop ALS, increase RNP 0.10 all Cats visibility to RVR 5500.

MALSR

MISSED APPROACH: Climb to 1100 then climbing left turn to 2600 direct ZEBUL and hold.

D-ATIS	RALEIGH APP CON	RALEIGH TOWER	GND CON	CLNC DEL	CPDLC
123.8	127.675 307.9	127.45 257.8	121.9 348.6	120.1	



1100 2600 ZEBUL

See planview for multiple IF locations.

APUCU 2200

2200

234°

GP 3.00° TCH 56

CATEGORY	A	B	C	D
RNP 0.10 DA		776/30 341 (400-%)		
RNP 0.30 DA		826/35 391 (400-%)		
AUTHORIZATION REQUIRED				

