

APP CRS
324°

Rwy Idg
3570

TDZE
429

Apt Elev
435

RNAV (GPS) RWY 32
RALEIGH-DURHAM INTL (RDU)

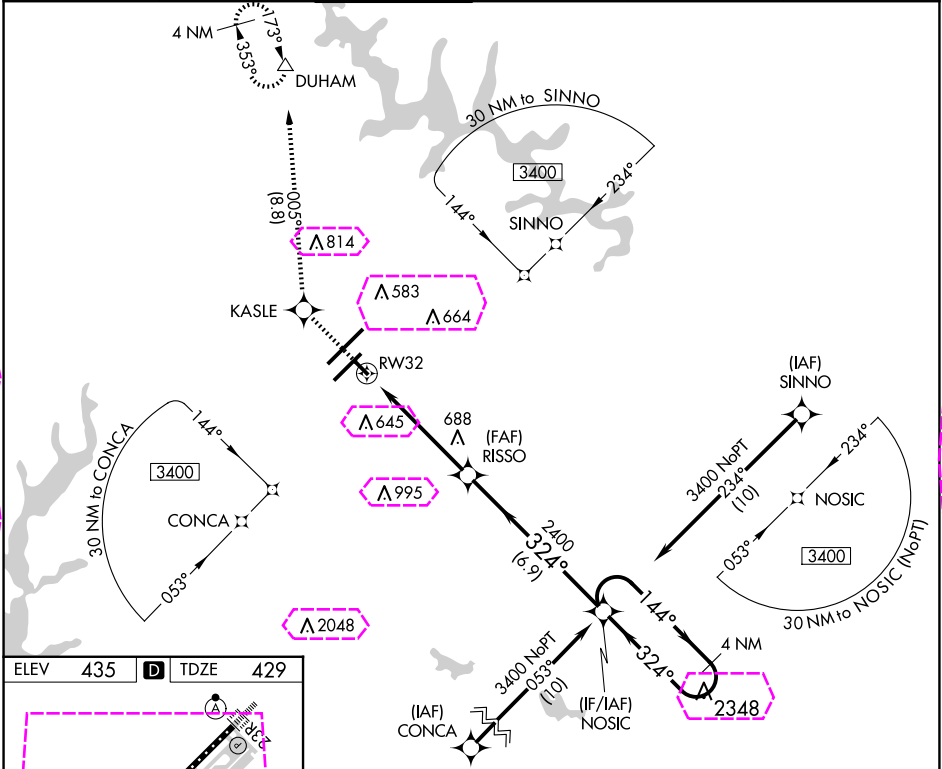
RNP APCH

▼

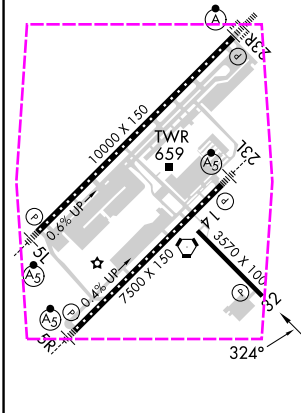
Rwy 32 helicopter visibility reduction below ¾ SM NA.
Baro-VNAV NA below -15°C (5°F) or above 48°C (118°F).

MISSED APPROACH: Climb to 2200 direct KASLE
and on track 005° to DUHAM and hold.

D-ATIS 123.8	RALEIGH APP CON 127.675 307.9	RALEIGH TOWER 127.45 257.8	GND CON 121.9 348.6	CLNC DEL 120.1	CPDLC
------------------------	---	--------------------------------------	-------------------------------	--------------------------	-------



ELEV 435 TDZE 429



REIL Rwy 32
MIRL Rwy 14-32
HIRL Rwys 5R-23L and 5L-23R
TDZ/CL Rwys 23R, 23L and 5L

2200	KASLE	tr 005°	DUHAM	4 NM Holding Pattern
*LNAV only:				
<div><div><div>RW32</div><div>1.3 NM</div><div>3.8 NM</div><div>6.9 NM</div><div>4 NM</div></div><div><div>324°</div><div>324°</div><div>144°</div><div>3400</div></div><div><div>2400</div><div>2400</div><div>2400</div><div>2400</div></div></div>				
GP 3.50° TCH 45				
CATEGORY	A	B	C	D
LNAV/VNAV DA	820-1¼ 391 (400-1¼)			NA
LNAV MDA	1000-1	571 (600-1)	1000-1½ 571 (600-1½)	NA
CIRCLING	1000-1¼	565 (600-1¼)	1040-1¾ 605 (700-1¾)	NA

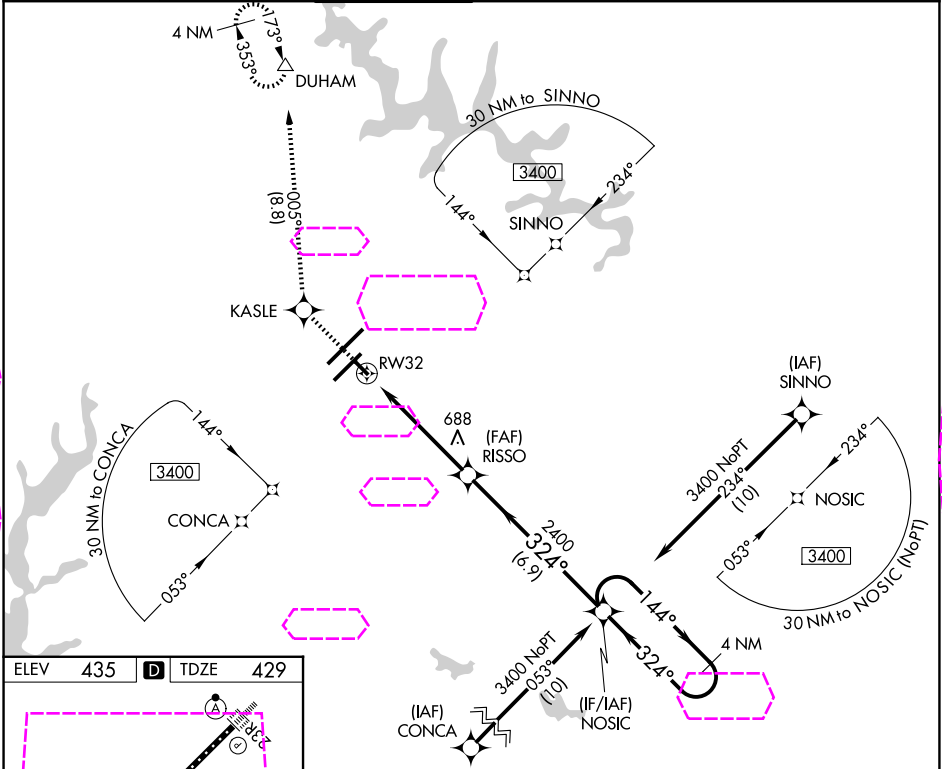
APP CRS	Rwy Ldg	3570
324°	TDZE	429
	Apt Elev	435

RNAV (GPS) RWY 32

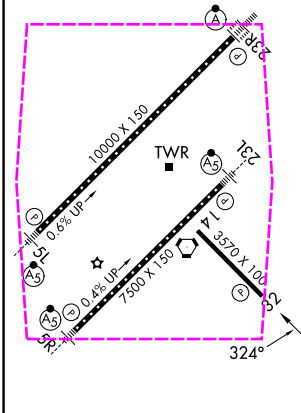
RALEIGH-DURHAM INTL (RDU)

RNP APCH.	MISSED APPROACH: Climb to 2200 direct KASLE and on track 005° to DUHAM and hold.
Rwy 32 helicopter visibility reduction below ¾ SM NA. Baro-VNAV NA below -15°C (5°F) or above 48°C (118°F).	

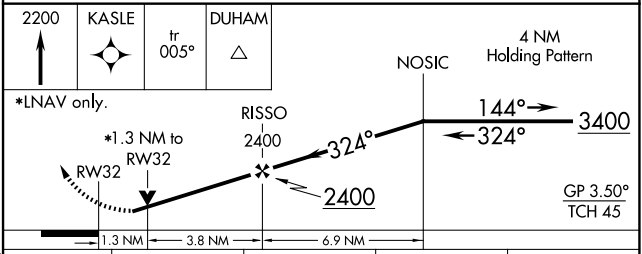
D-ATIS	RALEIGH APP CON	RALEIGH TOWER	GND CON	CLNC DEL	CPDLC
123.8	127.675 307.9	127.45 257.8	121.9 348.6	120.1	



ELEV	435	TDZE	429
------	-----	------	-----



REIL Rwy 32
MIRL Rwy 14-32
HIRL Rwys 5R-23L and 5L-23R
TDZ/CL Rwys 23R, 23L and 5L



CATEGORY	A	B	C	D
LNNAV/VNAV	DA	820-1¼	391 (400-1¼)	NA
LNNAV/MDA	1000-1	571 (600-1)	1000-1½ 571 (600-1½)	NA
CIRCLING	1000-1¼	565 (600-1¼)	1040-1¾ 605 (700-1¾)	NA