

RALEIGH/DURHAM, NORTH CAROLINA

AL-516 (FAA)

24361

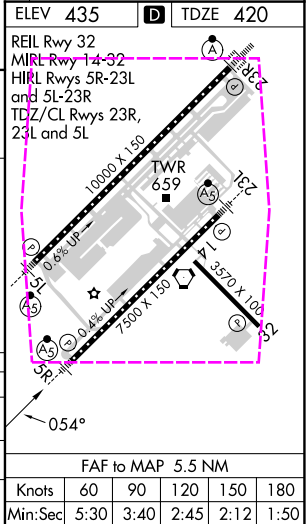
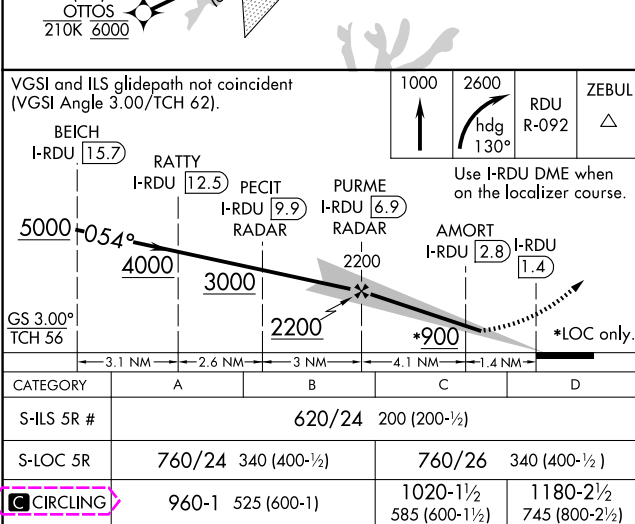
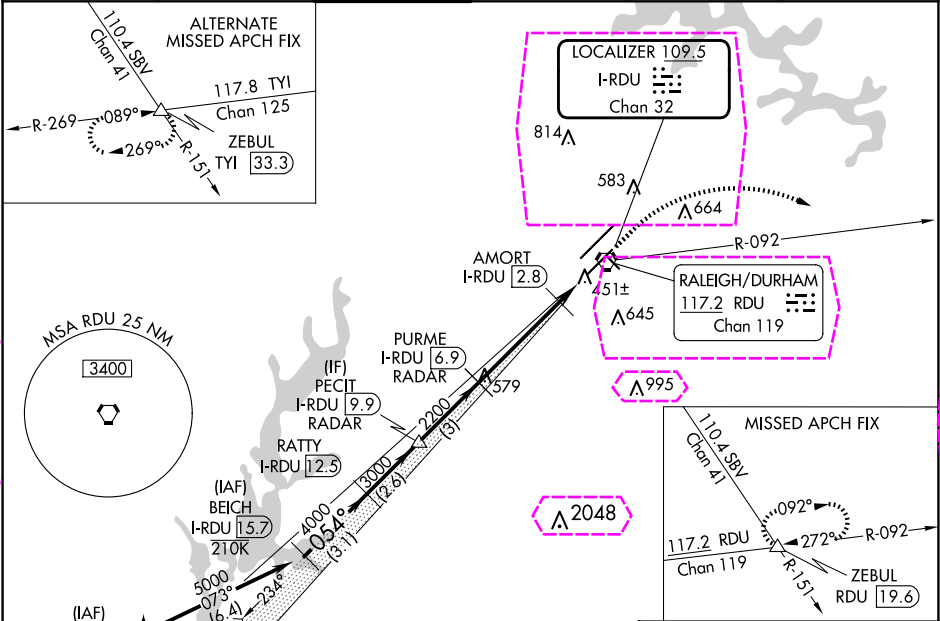
LOC/DME I-RDU	APP CRS	Rwy Idg
109.5	054°	7500
Chan 32		TDZE 420
		Apt Elev 435

ILS or LOC RWY 5R

RALEIGH-DURHAM INTL (RDU)

RNAV 1-DME/DME/IRU or GPS or RADAR required for procedure entry. DME or RADAR required for LOC only.	MALSR	MISSED APPROACH: Climb to 1000 then climbing right turn to 2600 on heading 130° and on RDU VORTAC R-092 to ZEBUL INT/ RDU 19.6 DME and hold.
Simultaneous approach authorized. # RVR 1800 authorized with use of FD or AP or HUD to DA.		

D-ATIS 123.8	RALEIGH APP CON 127.675 307.9	RALEIGH TOWER 127.45 257.8	GND CON 121.9 348.6	CLNC DEL 120.1	CPDLC
------------------------	---	--------------------------------------	-------------------------------	--------------------------	-------



RALEIGH/DURHAM, NORTH CAROLINA
Amdt 31 25FEB21

35°53'N-78°47'W

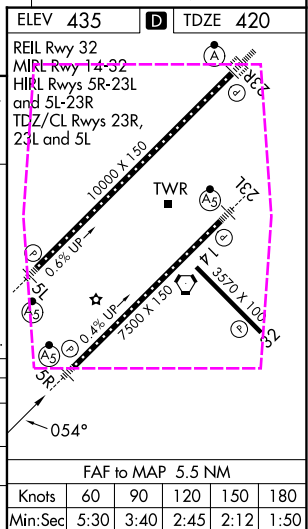
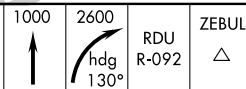
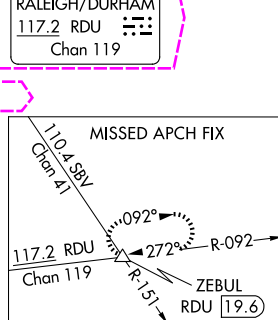
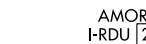
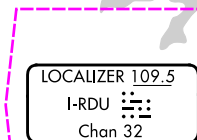
RALEIGH-DURHAM INTL (RDU)
ILS or LOC RWY 5R

ILS or LOC RWY 5R
RALEIGH-DURHAM INTL (RDU)

MISSED APPROACH: Climb to 1000 then climbing right turn to 2600 on heading 130° and on RDU VORTAC R-092 to ZEBUL INT/ RDU 19.6 DME and hold.



D-ATIS
123.8



FAF to MAP 5.5 NM					
Knots	60	90	120	150	180
Min:Sec	5:30	3:40	2:45	2:12	1:50

SE-2, 07 AUG 2025 to 04 SEP 2025