

RALEIGH/DURHAM, NORTH CAROLINA

AL-516 (FAA)

24361

LOC/DME I-GKK 109.1 Chan 28	APP CRS 054°	Rwy Idg 10000 TDZE 384 Apt Elev 435
--	------------------------	--

ILS or LOC RWY 5L

RALEIGH-DURHAM INTL (RDU)

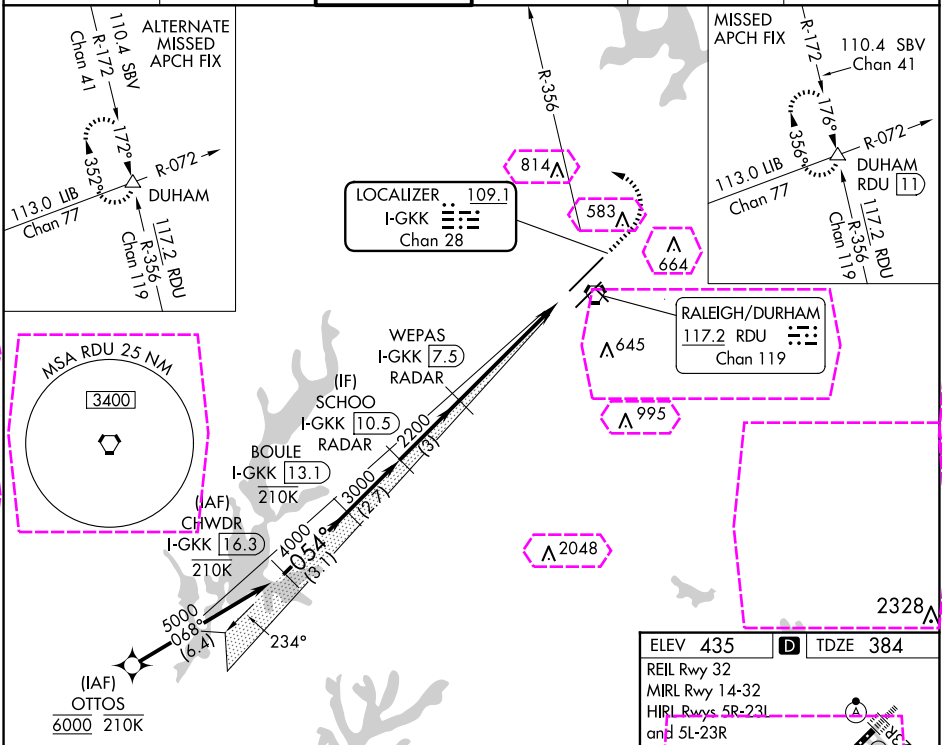
RNAV 1-DME/DME/IRU or GPS or RADAR required for procedure entry. DME or RADAR required for LOC only.

Simultaneous approach authorized.

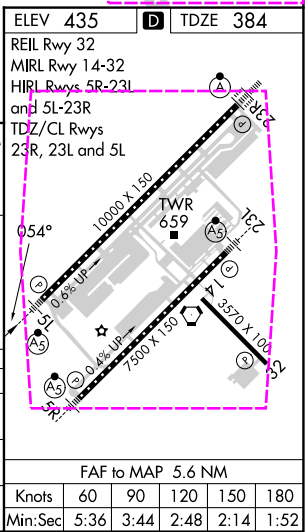
MALSR

MISSED APPROACH: Climb to 1000 then climbing left turn to 2200 on heading 310° and RDU VORTAC R-356 to DUHAM INT/RDU 11 DME and hold.

D-ATIS 123.8	RALEIGH APP CON 127.675 307.9	RALEIGH TOWER 127.45 257.8	GND CON 121.9 348.6	CLNC DEL 120.1	CPDLC
------------------------	---	--------------------------------------	-------------------------------	--------------------------	-------



CHWDR I-GKK [16.3]	BOULE I-GKK [13.1]	SCHOO I-GKK [10.5]	WEPAS I-GKK [7.5]	1000	2200	RDU R-356	DUHAM
5000-054°							
GS 3.00° TCH 57							
VGSi and ILS glidepath not coincident (VGSi Angle 3.00/TCH 72).							
-3.1 NM -2.7 NM -3 NM -4.3 NM -1.3 NM							
CATEGORY	A	B	C	D			
S-ILS 5L	598/18 214 (200-½)						
S-LOC 5L	840/24 456 (500-½) 840/45 456 (500-¾)						
CIRCLING	960-1 525 (600-1) 1020-1½ 585 (600-1½) 1180-2½ 745 (800-2½)						



RALEIGH/DURHAM, NORTH CAROLINA
Amdt 6 25FEB21

35°53'N-78°47'W

RALEIGH-DURHAM INTL (RDU)
ILS or LOC RWY 5L

FAF to MAP 5.6 NM	Knots	60	90	120	150	180
	Min:Sec	5:36	3:44	2:48	2:14	1:52

RALEIGH/DURHAM, NORTH CAROLINA

AL-516 (FAA)

25219

LOC/DME I-GKK 109.1 Chan 28	APP CRS 054°	Rwy Ldg TDZE Apt Elev 10000 384 435
--	------------------------	---

ILS or LOC RWY 5L
RALEIGH-DURHAM INTL (RDU)

RNAV 1-DME/DME/IRU or GPS or RADAR required for procedure entry. DME or RADAR required for LOC only.

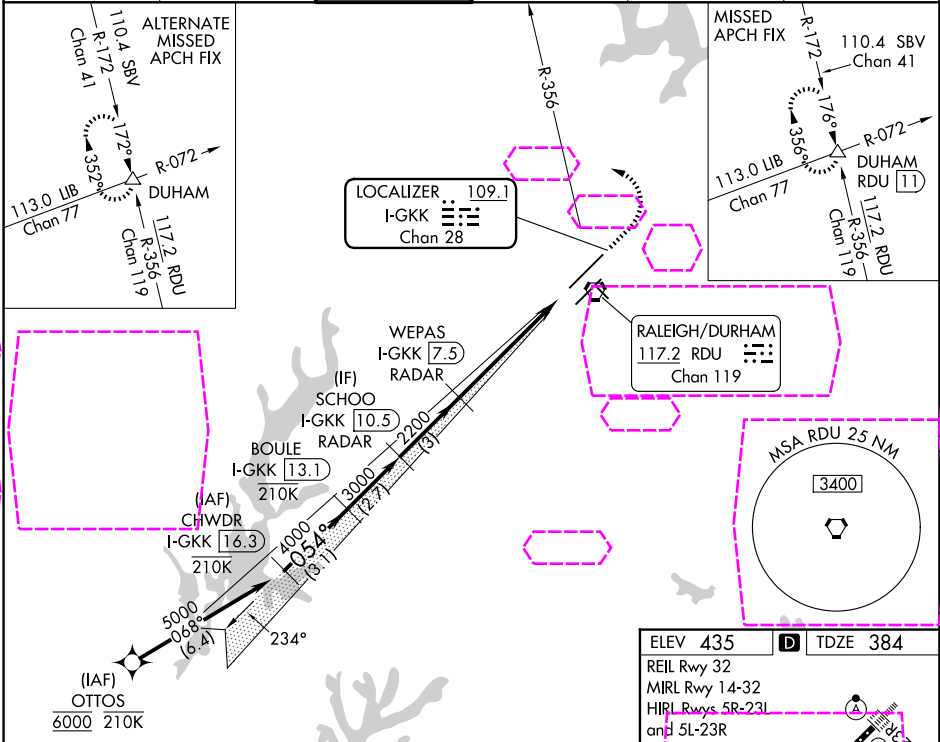
Simultaneous approach authorized.

MALSR

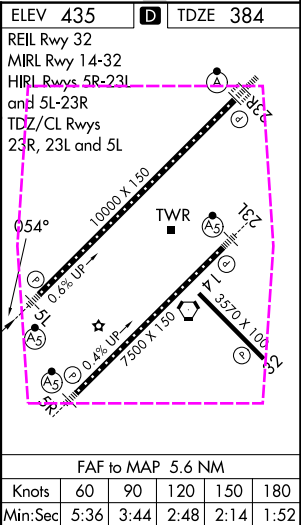


MISSED APPROACH: Climb to 1000 then climbing left turn to 2200 on heading 310° and RDU VORTAC R-356 to DUHAM INT/RDU 11 DME and hold.

D-ATIS 123.8	RALEIGH APP CON 127.675 307.9	RALEIGH TOWER 127.45 257.8	GND CON 121.9 348.6	CLNC DEL 120.1	CPDLC
------------------------	---	--------------------------------------	-------------------------------	--------------------------	-------



CHWDR I-GKK 16.3	BOULE I-GKK 13.1	SCHOO I-GKK 10.5	WEPAS I-GKK 7.5	1000	2200	RDU R-356	DUHAM
5000-054°							
GS 3.00° TCH 57							
VGSI and ILS glidepath not coincident (VGSI Angle 3.00/TCH 72).							
-3.1 NM -2.7 NM -3 NM -4.3 NM -1.3 NM							
CATEGORY	A	B	C	D			
S-ILS 5L	598/18 214 (200-½)						
S-LOC 5L	840/24 456 (500-½) 840/45 456 (500-¾)						
CIRCLING	960-1 525 (600-1) 1020-1½ 585 (600-1½) 1180-2½ 745 (800-2½)						



RALEIGH/DURHAM, NORTH CAROLINA
Amdt 6 25FEB21

35°53'N-78°47'W

RALEIGH-DURHAM INTL (RDU)
ILS or LOC RWY 5L

SE-2, 07 AUG 2025 to 04 SEP 2025

SE-2, 07 AUG 2025 to 04 SEP 2025