

LOC/DME I-DMP 111.7 Chan 54	APP CRS 234°	Rwy Idg 10000 TDZE 409 Apt Elev 435
---	------------------------	--

ILS or LOC RWY 23R

RALEIGH-DURHAM INTL (RDU)

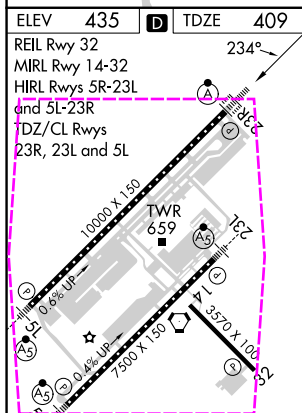
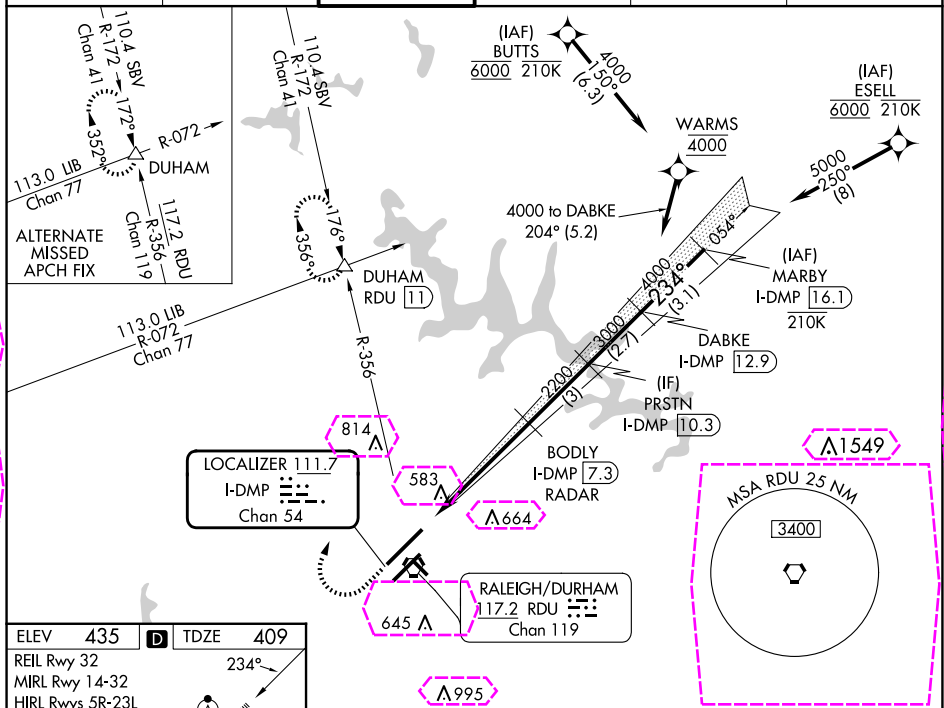
RNAV 1-DME/DME/IRU or GPS or RADAR required for procedure entry. RADAR or DME required for LOC only.

ALSF-2

MISSED APPROACH: Climb to 1000 then climbing right turn to 2200 on RDU VORTAC R-356 to DUHAM INT/RDU 11 DME and hold.

T Simultaneous approach authorized. For inop ALS
A increase S-LOC 23R Cat C/D visibility to 1 $\frac{5}{8}$ SM.

D-ATIS 123.8	RALEIGH APP CON 127.675 307.9	RALEIGH TOWER 127.45 257.8	GND CON 121.9 348.6	CLNC DEL 120.1	CPDLC
-----------------	----------------------------------	-------------------------------	------------------------	-------------------	-------



FAF to MAP 5.5 NM					
Knots	60	90	120	150	180
Min:Sec	5:30	3:40	2:45	2:12	1:50

<div>1000 ↑</div> <div>2200 ↗</div> <div>RDU R-356</div> <div>DUHAM △</div> <div>VGS1 and ILS glidepath not coincident (VGS1 Angle 3.00/TCH 69).</div> <div>MARBY I-DMP 16.1</div>	<div>*LOC only.</div> <div><div>I-DMP 1.8</div><div>*I-DMP 3.4</div><div>BODYLY I-DMP 7.3</div><div>PRSTN I-DMP 10.3</div><div>DABKE I-DMP 12.9</div><div>GS 3.00° TCH 55</div></div> <div><div>1.6 NM</div><div>3.9 NM</div><div>3 NM</div><div>2.7 NM</div><div>3.1 NM</div></div> <div><div>234°</div><div>5000</div><div>4000</div><div>3000</div><div>2200</div></div>			
CATEGORY	A	B	C	D
S-ILS 23R	609/18 200 (200-½)			
S-LOC 23R	980/24 571 (600-½)	980-1¼ 571 (600-1¼)		
<div>C CIRCLING</div>	980-1 545 (600-1)	1020-1⅝ 585 (600-1⅝)	1180-2½ 745 (800-2½)	

SE-2, 10 JUL 2025 to 07 AUG 2025

SE-2, 10 JUL 2025 to 07 AUG 2025

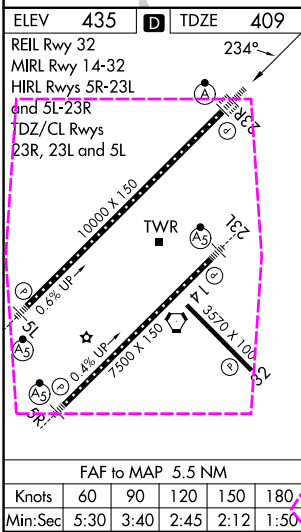
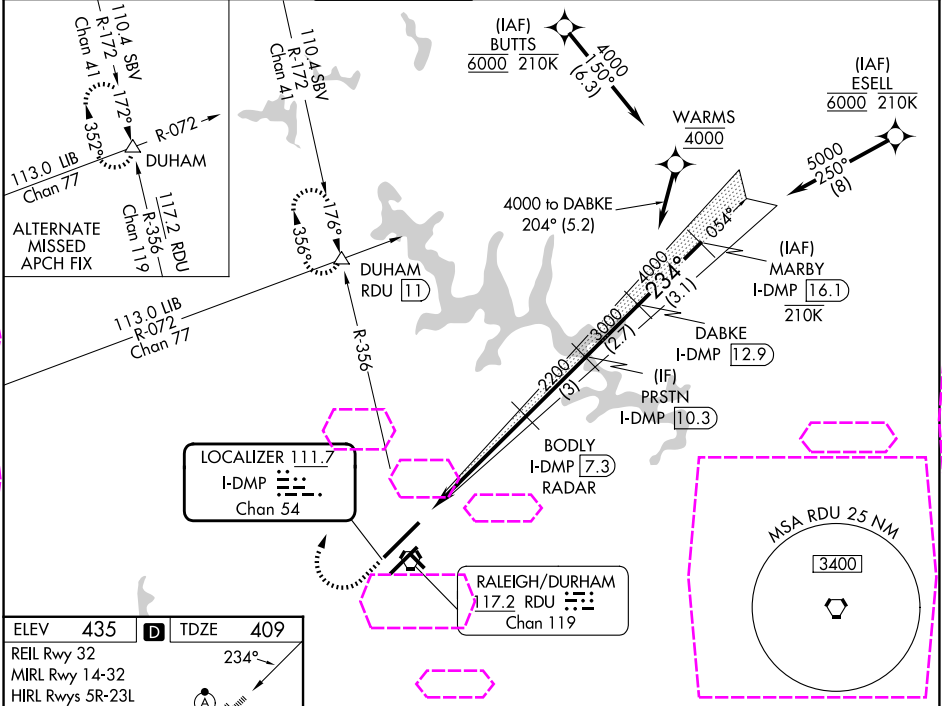
LOC/DME I-DMP 111.7 Chan 54	APP CRS 234°	Rwy Ldg TDZE 409 Apt Elev 435
---	------------------------	---

ILS or LOC RWY 23R

RALEIGH-DURHAM INTL (RDU)

RNAV 1-DME/DME/IRU or GPS or RADAR required for procedure entry. RADAR or DME required for LOC only.	ALSf-2 	MISSED APPROACH: Climb to 1000 then climbing right turn to 2200 on RDU VORTAC R-356 to DUHAM INT/RDU 11 DME and hold.
Simultaneous approach authorized. For inop ALS increase S-LOC 23R Cat C/D visibility to 1½ SM.		

D-ATIS 123.8	RALEIGH APP CON 127.675 307.9	RALEIGH TOWER 127.45 257.8	GND CON 121.9 348.6	CLNC DEL 120.1	CPDLC
------------------------	---	--------------------------------------	-------------------------------	--------------------------	-------



1000	2200	RDU R-356	DUHAM	VGSI and ILS glidepath not coincident (VGSI Angle 3.00/TCH 69).	MARBY I-DMP 16.1
*LOC only.		BODY I-DMP 7.3 RADAR	PRSTN I-DMP 10.3	DABKE I-DMP 12.9	
		I-DMP 1.8	*I-DMP 3.4	2200	5000
		1.6 NM	3.9 NM	3 NM	2.7 NM 3.1 NM
CATEGORY	A	B	C	D	
S-ILS 23R	609/18 200 (200-½)				
S-LOC 23R	980/24 571 (600-½)		980-1¼ 571 (600-1¼)		
CIRCLING	980-1 545 (600-1)		1020-1½ 585 (600-1½)		1180-2½ 745 (800-2½)