

RALEIGH/DURHAM, NORTH CAROLINA

AL-516 (FAA)

24361

LOC/DME I-LEI	APP CRS	Rwy Idg	7500
108.5	234°	TDZE	435
Chan 22		Apt Elev	435

ILS or LOC RWY 23L

RALEIGH-DURHAM INTL (RDU)

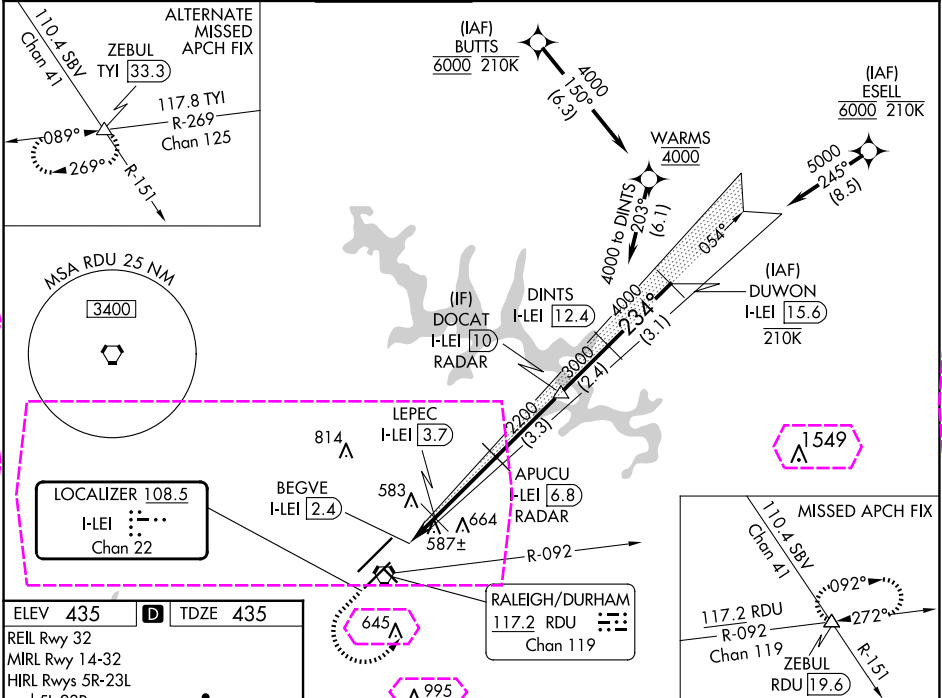
RNAV 1-DME/DME/IRU or GPS or RADAR required for procedure entry.
DME required for LOC only.

Simultaneous approach authorized. For inop ALS, increase S-ILS 23L all
Cats visibility to RVR 5500. Localizer unusable for coupled approaches
below 1100 or within 2 NM of threshold.



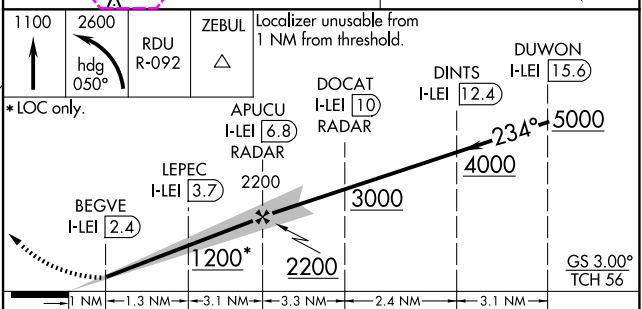
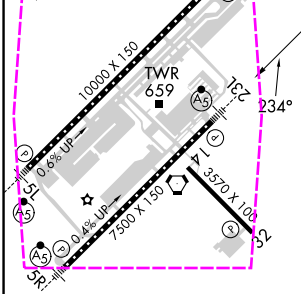
MISSED APPROACH: Climb to 1100
then climbing left turn to 2600 on
heading 050° and RDU VORTAC
R-092 to ZEBUL INT and hold.

D-ATIS	RALEIGH APP CON	RALEIGH TOWER	GND CON	CLNC DEL	CPDLC
123.8	127.675 307.9	127.45 257.8	121.9 348.6	120.1	



ELEV 435	TDZE 435
----------	----------

REIL Rwy 32
MIRL Rwy 14-32
HIRL Rwys 5R-23L
and 5L-23R
TDZ/CL Rwys
23R, 23L and 5L



CATEGORY	A	B	C	D
S-ILS 23L	806/35	371 (400- $\frac{3}{4}$)		
S-LOC 23L	840/40	405 (500- $\frac{3}{4}$)		
CIRCLING	960-1 $\frac{1}{4}$	525 (600-1 $\frac{1}{4}$)	1020-1 $\frac{1}{2}$ 585 (600-1 $\frac{1}{2}$)	1180-2 $\frac{1}{2}$ 745 (800-2 $\frac{1}{2}$)

