

LOC/DME I-RDU <b>109.5</b> Chan <b>32</b>	APP CRS <b>054°</b>	Rwy Idg <b>7500</b> TDZE <b>420</b> Apt Elev <b>435</b>	ILS RWY 5R (SA CAT I & II) RALEIGH-DURHAM INTL (RDU)
---	------------------------	---	---

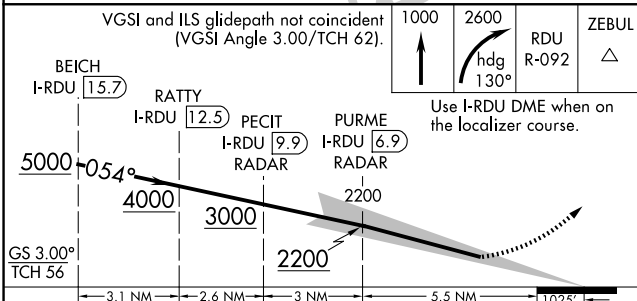
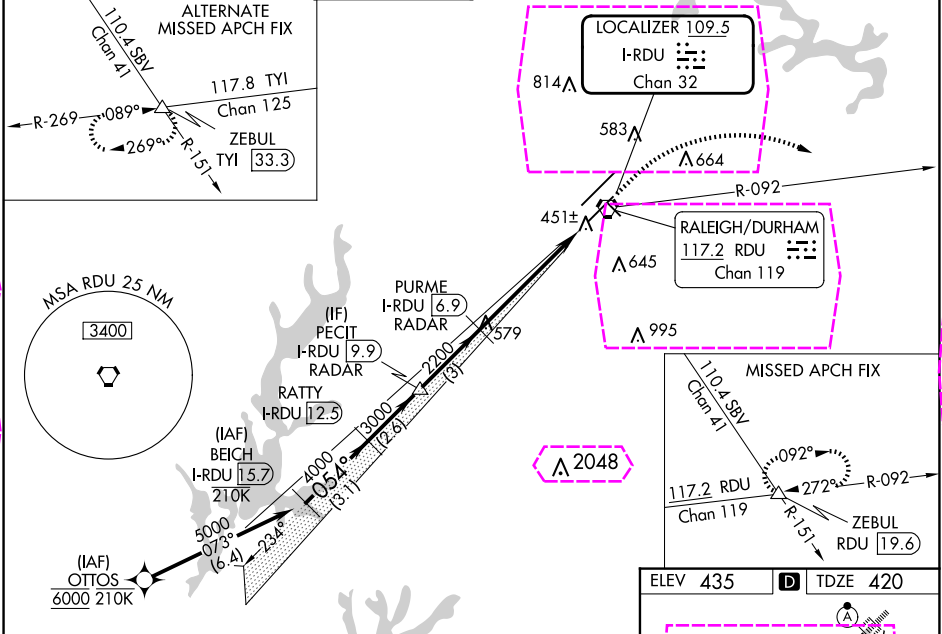
RNAV 1-DME/DME/IRU or GPS or RADAR required for procedure entry.

Simultaneous approach authorized.  
SA CAT I: Requires specific OPSPEC, MSPEC or LOA approval and use of HUD to DH.  
SA CAT II: Reduced lighting: Requires specific OPSPEC, MSPEC or LOA approval and use of autoland or HUD to touchdown.

MALSR

MISSED APPROACH: Climb to 1000 then climbing right turn to 2600 on heading 130° and on RDU VORTAC R-092 to ZEBUL INT/RDU 19.6 DME and hold.

D-ATIS <b>123.8</b>	RALEIGH APP CON <b>127.675 307.9</b>	RALEIGH TOWER <b>127.45 257.8</b>	GND CON <b>121.9 348.6</b>	CLNC DEL <b>120.1</b>	CPDLC
------------------------	---	--------------------------------------	-------------------------------	--------------------------	-------



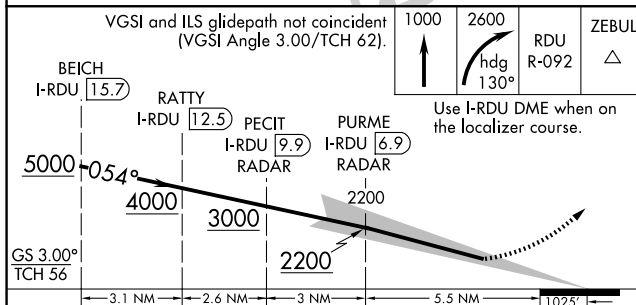
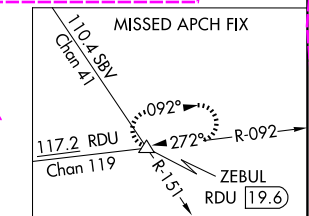
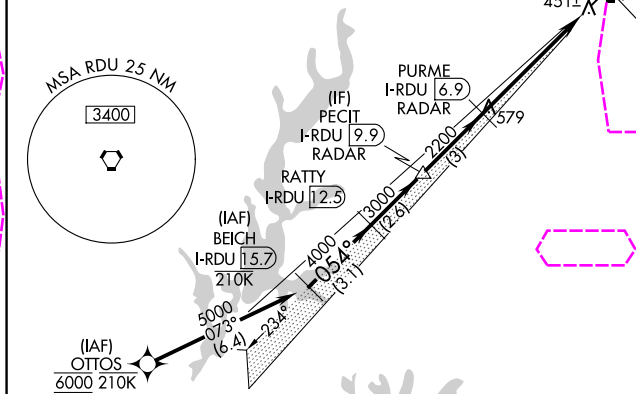
CATEGORY	A	B	C	D
S-ILS 5R	SA CAT I	RA 230/14	150	DA 570
S-ILS 5R	SA CAT II	RA 183/12	100	DA 520

SA CATEGORY I & II ILS SPECIAL AIRCREW & AIRCRAFT CERTIFICATION REQUIRED

REIL Rwy 32  
MIRL Rwy 14-32  
HIRL Rwys 5R-23L and 5L-23R  
TDZ/CL Rwys 23R, 23L and 5L

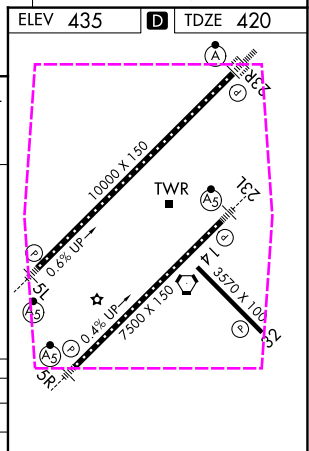
**ILS RWY 5R (SA CAT I & II)**  
RALEIGH-DURHAM INTL (RDU)

**MISSED APPROACH:** Climb to 1000 then climbing right turn to 2600 on heading 130° and on RDU VORTAC R-092 to ZEBUL INT/RDU 19.6 DME and hold.

[illegible]

CATEGORY	A	B	C	D
S-ILS 5R	SA CAT I	RA 230/14	150	DA 570
S-ILS 5R	SA CAT II	RA 183/12	100	DA 520

SA CATEGORY I & II ILS SPECIAL AIRCREW  
& AIRCRAFT CERTIFICATION REQUIRED



REIL Rwy 32  
MIRL Rwy 14-32  
HIRL Rwy 5R-23L and 5L-23R  
TDZ/CL Rwy 23R, 23L and 5L