



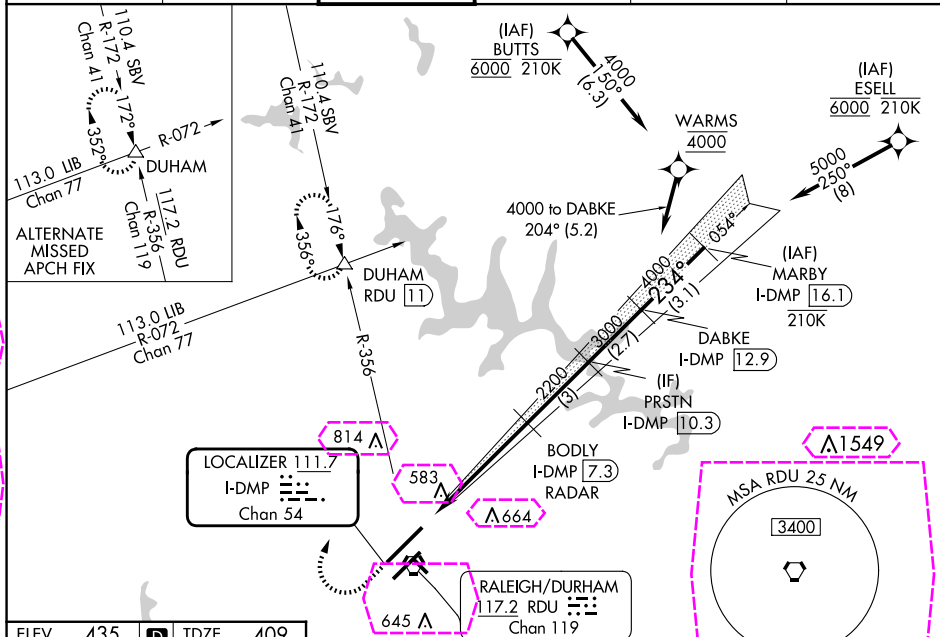
24361

LOC/DME I-DMP <b>111.7</b> Chan <b>54</b>	APP CRS <b>234°</b>	Rwy Idg <b>10000</b> TDZE <b>409</b> Apt Elev <b>435</b>
---	------------------------	--

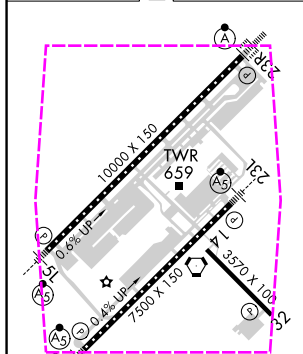
ILS RWY 23R (CAT II & III)  
RALEIGH-DURHAM INTL (RDU)

RNAV 1-DME/DME/IRU or GPS or RADAR required for procedure entry.	ALSF-2 	MISSED APPROACH: Climb to 1000 then climbing right turn to 2200 on RDU VORTAC R-356 to DUHAM INT/RDU 11 DME and hold.
 Simultaneous approach authorized.		

D-ATIS 123.8	RALEIGH APP CON 127.675 307.9	RALEIGH TOWER 127.45 257.8	GND CON 121.9 348.6	CLNC DEL 120.1	CPDLC
-----------------	----------------------------------	-------------------------------	------------------------	-------------------	-------



ELEV	435	<b>D</b>	TDZE	409
------	-----	----------	------	-----



REIL Rwy 32  
MIRL Rwy 14-32  
HIRL Rwys 5R-23L and 5L-23R  
TDZ/CL Rwys 23R, 23L and 5L

1000 ↑	2200 ↗	RDU R-356	DUHAM △	VGSI and ILS glidepath not coincident (VGSI Angle 3.00°/TCH 69).			
				DABKE I-DMP 12.9	MARBY I-DMP 16.1		
				BODYLY I-DMP 7.3	PRSTN I-DMP 10.3		
				5000			
				234°			
				4000			
				3000			
				2200			
				GS 3.00° TCH 55			
				5.5 NM			
				3 NM			
				2.7 NM			
				3.1 NM			
CATEGORY	A		B		C		D
S-ILS 23R	CAT II RA 105/12 100 DA 509						
S-ILS 23R	CAT III RVR 06						

CATEGORY II & III ILS - SPECIAL AIRCREW  
& AIRCRAFT CERTIFICATION REQUIRED

**ILS RWY 23R (CAT II & III)**  
RALEIGH-DURHAM INTL (RDU)

**MISSED APPROACH:** Climb to 1000 then climbing right turn to 2200 on RDU VORTAC R-356 to DUHAM INT/RDU 11 DME and hold.

[illegible]

CATEGORY II & III ILS - SPECIAL AIRCREW  
& AIRCRAFT CERTIFICATION REQUIRED