

EVANSVILLE, INDIANA

AL-513 (FAA)

23026

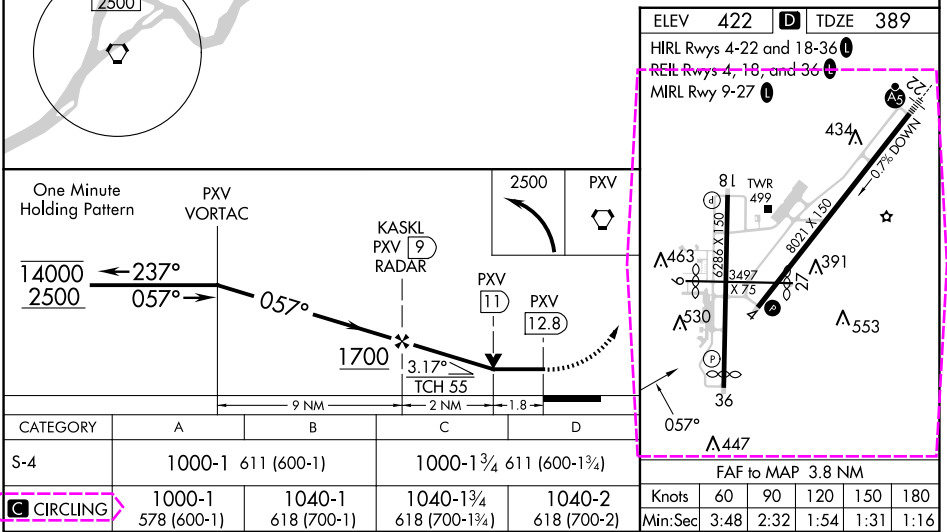
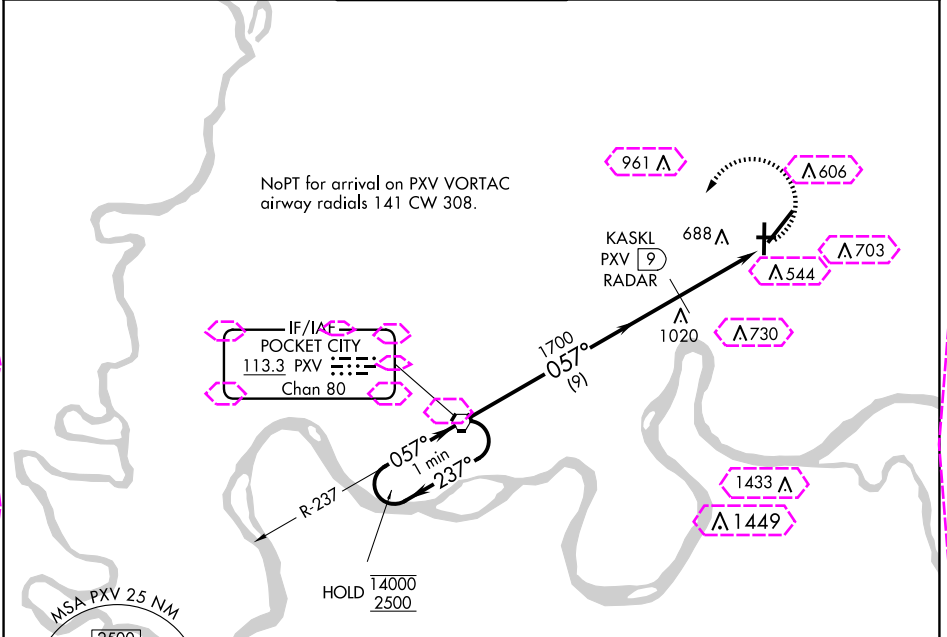
VORTAC PXV 113.3 Chan 80	APP CRS 057°	Rwy Idg TDZE 389 Apt Elev 422
--	------------------------	---

VOR RWY 4

EVANSVILLE RGNL (EVV)

DME or RADAR required.	MISSED APPROACH: Climbing left turn to 2500 direct PXV VORTAC and hold.
ASR RWY 4 helicopter visibility reduction below ¾ SM NA. Circling Rwy 9 NA at night.	

ATIS 120.2	EVANSVILLE APP CON ★ 124.025 290.9	EVANSVILLE TOWER ★ 118.7 (CTAF) 257.8	GND CON 121.9	CLNC DEL 126.6	UNICOM 122.95
----------------------	--	---	-------------------------	--------------------------	-------------------------



EVANSVILLE, INDIANA Amdt 7A 13SEP18	38°02'N-87°32'W	EVANSVILLE RGNL (EVV) VOR RWY 4
--	-----------------	---

EVANSVILLE, INDIANA

AL-513 (FAA)

25219

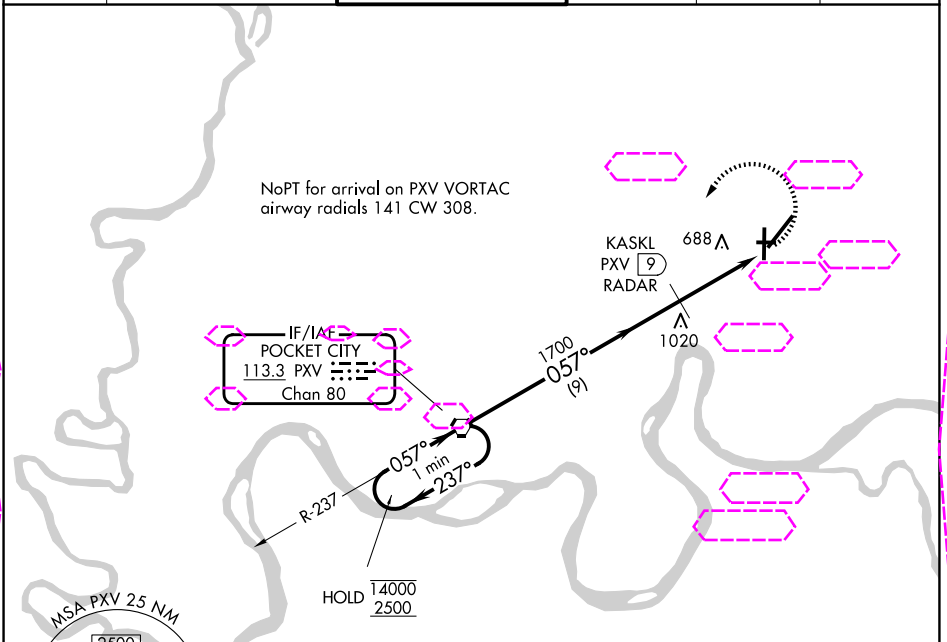
VORTAC PXV 113.3 Chan 80	APP CRS 057°	Rwy Ldg TDZE 389 Apt Elev 422
--	------------------------	---

VOR RWY 4

EVANSVILLE RGNL (EVV)

DME or RADAR required.	MISSED APPROACH: Climbing left turn to 2500 direct PXV VORTAC and hold.
ASR RWY 4 helicopter visibility reduction below ¾ SM NA. Circling Rwy 9 NA at night.	

ATIS 120.2	EVANSVILLE APP CON ★ 124.025 290.9	EVANSVILLE TOWER ★ 118.7 (CTAF) 257.8	GND CON 121.9	CLNC DEL 126.6	UNICOM 122.95
----------------------	--	---	-------------------------	--------------------------	-------------------------



ELEV 422 TDZE 389

HIRL Rwy 4-22 and 18-36

REL Rwy 4, 18, and 36

MIRL Rwy 9-27

One Minute Holding Pattern

PXV VORTAC

KASKL PXV 9 RADAR

PXV 11

PXV 12.8

TCH 55

9 NM

2 NM

1.8

CATEGORY	A	B	C	D
S-4	1000-1 611 (600-1)	1000-1 611 (600-1)	1000-1 611 (600-1)	1000-1 611 (600-1)
CIRCLING	1000-1 578 (600-1)	1040-1 618 (700-1)	1040-1 618 (700-1)	1040-2 618 (700-2)

FAF to MAP 3.8 NM

Knots	60	90	120	150	180
Min:Sec	3:48	2:32	1:54	1:31	1:16

EVANSVILLE, INDIANA
Amdt 7A 13SEP18

38°02'N-87°32'W

EVANSVILLE RGNL (EVV)
VOR RWY 4

EC-2, 07 AUG 2025 to 04 SEP 2025

EC-2, 07 AUG 2025 to 04 SEP 2025