

EVANSVILLE, INDIANA

AL-513 (FAA)

23026

WAAS CH <b>42512</b> <b>W22A</b>	APP CRS <b>221°</b>	Rwy Idg <b>8021</b> TDZE <b>422</b> Apt Elev <b>422</b>
--	------------------------	---

# RNAV (GPS) RWY 22

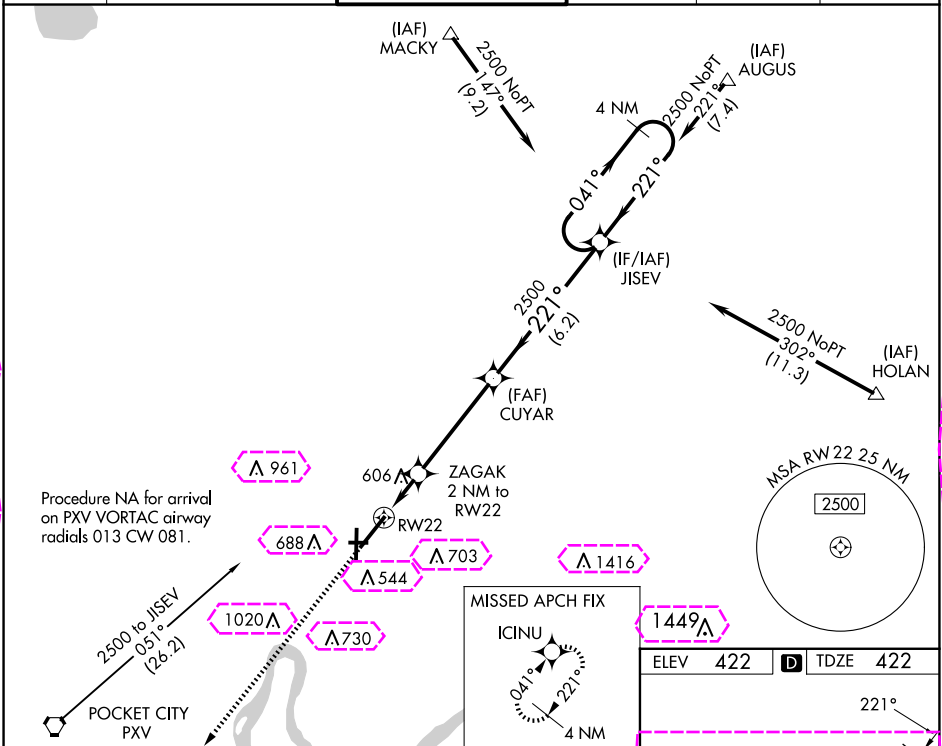
EVANSVILLE RGNL (EVV)

ASR  
For uncompensated Baro-VNAV systems, LNAV/VNAV NA below -15°C (5°F) or above 54°C (130°F). DME/DME RNP-0.3 NA. Circling Rwy 9 NA at night.  
\*\* RVR 1800 authorized with the use of FD or AP or HUD to DA.

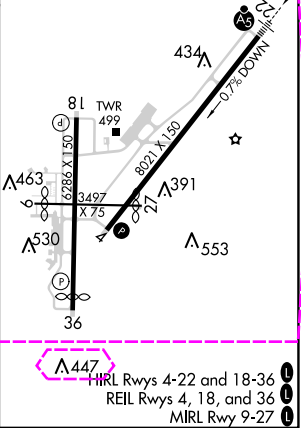
MALSRL

MISSED APPROACH:  
Climb to 2500 direct  
ICINU and hold.

ATIS <b>120.2</b>	EVANSVILLE APP CON ★ <b>124.025 290.9</b>	EVANSVILLE TOWER ★ <b>118.7 (CTAF) 257.8</b>	GND CON <b>121.9</b>	CLNC DEL <b>126.6</b>	UNICOM <b>122.95</b>
----------------------	--	---	-------------------------	--------------------------	-------------------------



2500 ↑ ICINU	ZAGAK 2 NM to RW22	CUYAR 2500	JISEV	4 NM Holding Pattern
*LNAV only	*1.2 NM to RW22	*1100	2500	GP 3.00° TCH 50
RW22	1.2 NM	0.8	4.4 NM	6.2 NM
CATEGORY	A	B	C	D
LPV DA	**622/24		200 (200-½)	
LNAV/VNAV DA	840/45		418 (500-¾)	
LNAV MDA	860/24		438 (500-½)	860/40 438 (500-¾)
CIRCLING	920-1 498 (500-1)	1040-1 618 (700-1)	1040-1¾ 618 (700-1¾)	1040-2 618 (700-2)



EVANSVILLE, INDIANA

AL-513 (FAA)

25219

WAAS CH <b>42512</b> <b>W22A</b>	APP CRS <b>221°</b>	Rwy Ldg <b>8021</b> TDZE <b>422</b> Apt Elev <b>422</b>
--	------------------------	---

# RNAV (GPS) RWY 22

EVANSVILLE RGNL (EVV)

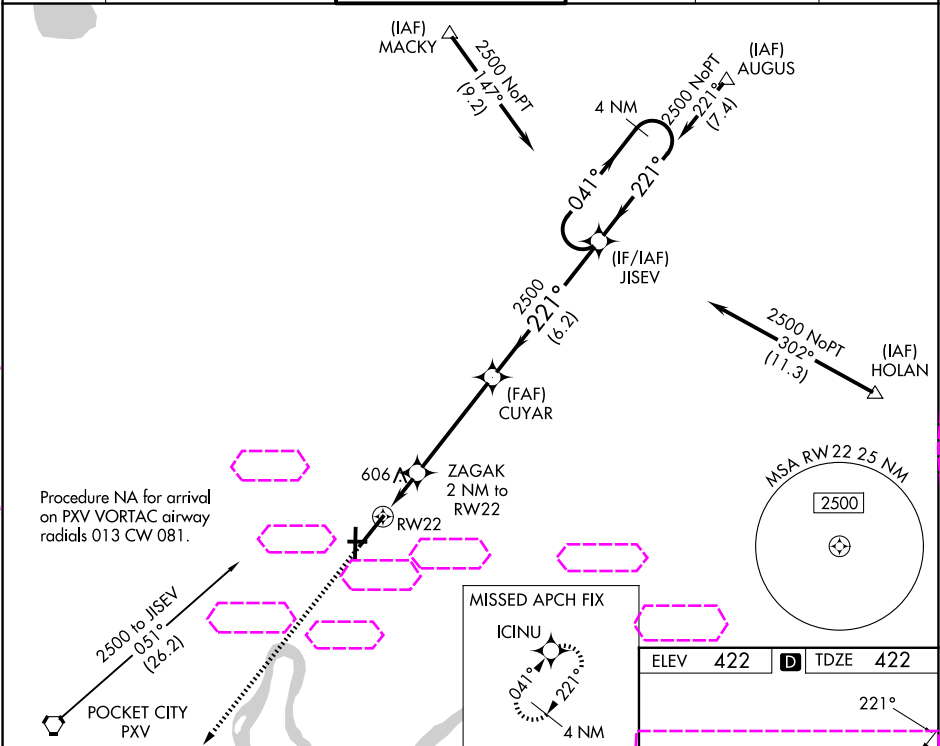
ASR

For uncompensated Baro-VNAV systems, LNAV/VNAV NA below -1.5°C (5°F) or above 54°C (130°F). DME/DME RNP-0.3 NA. Circling Rwy 9 NA at night.  
\*\* RVR 1800 authorized with the use of FD or AP or HUD to DA.

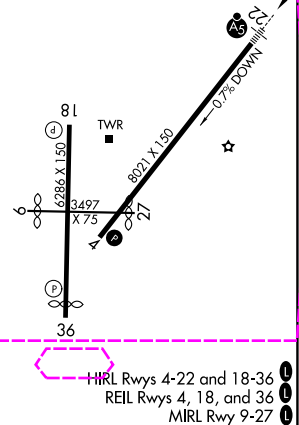
MALSR

MISSED APPROACH:  
Climb to 2500 direct  
ICINU and hold.

ATIS <b>120.2</b>	EVANSVILLE APP CON ★ <b>124.025 290.9</b>	EVANSVILLE TOWER ★ <b>118.7 (CTAF) 257.8</b>	GND CON <b>121.9</b>	CLNC DEL <b>126.6</b>	UNICOM <b>122.95</b>
----------------------	--	---	-------------------------	--------------------------	-------------------------



2500 ↑ ICINU	ZAGAK 2 NM to RW22	CUYAR 2500	JISEV	4 NM Holding Pattern
*LNAV only	*1.2 NM to RW22	*1100	2500	041° → ← 221° 2500
GP 3.00° TCH 50				
CATEGORY	A	B	C	D
LPV DA	**622/24 200 (200-½)			
LNAV/ VNAV	840/45 418 (500-¾)			
LNAV MDA	860/24	438 (500-½)	860/40	438 (500-¾)
CIRCLING	920-1 498 (500-1)	1040-1 618 (700-1)	1040-1¾ 618 (700-1¾)	1040-2 618 (700-2)



EVANSVILLE, INDIANA  
Amdt 1B 17AUG17

38°02'N - 87°32'W

EVANSVILLE RGNL (EVV)  
RNAV (GPS) RWY 22

EC-2, 07 AUG 2025 to 04 SEP 2025

EC-2, 07 AUG 2025 to 04 SEP 2025

HIRL Rwy 4-22 and 18-36  
REIL Rwy 4, 18, and 36  
MIRL Rwy 9-27