

EVANSVILLE, INDIANA

AL-513 (FAA)

25107

WAAS CH 50421 W18A	APP CRS 184°	Rwy Idg 5498 TDZE 396 Apt Elev 422
--	------------------------	---

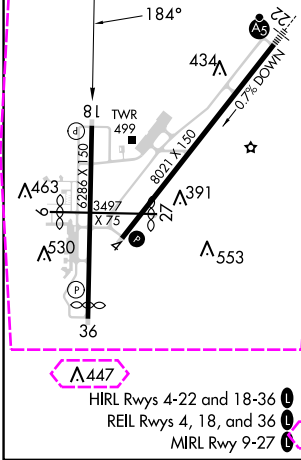
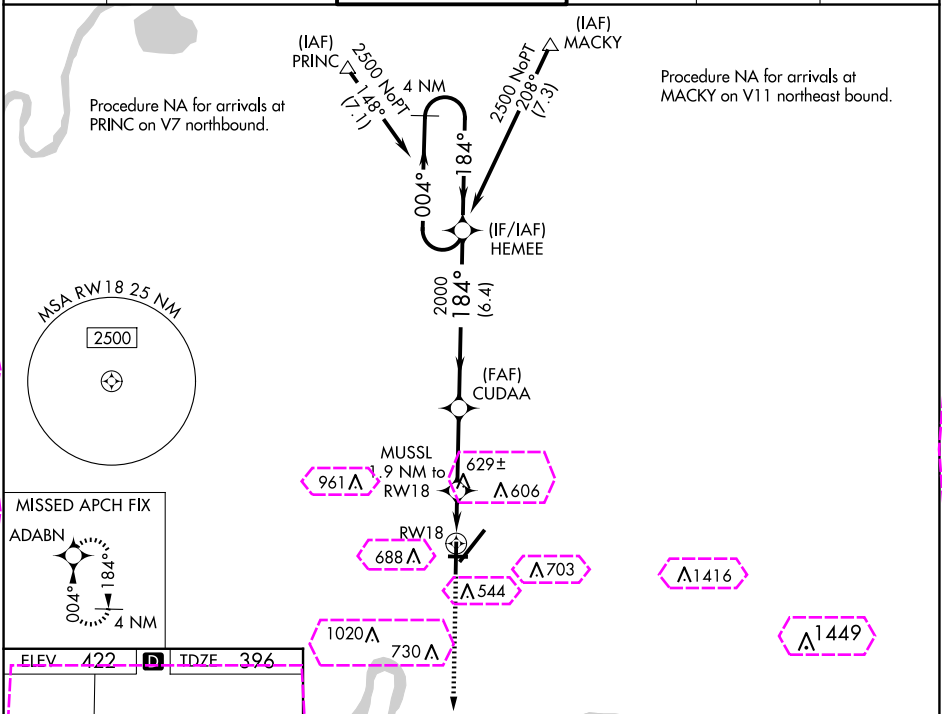
RNAV (GPS) RWY 18

EVANSVILLE RGNL (EVV)

ASR For uncompensated Baro-VNAV systems, LNAV/VNAV NA below -15°C (5°F) or above 54°C (130°F). DME/DME RNP-0.3 NA. Circling Rwy 9 NA at night. Helicopter visibility reduction below ¾ SM NA.

MISSED APPROACH: Climb to 2500 direct ADABN and hold.

ATIS 120.2	EVANSVILLE APP CON ★ 124.025 290.9	EVANSVILLE TOWER ★ 118.7 (CTAF) 257.8	GND CON 121.9	CLNC DEL 126.6	UNICOM 122.95
----------------------	--	---	-------------------------	--------------------------	-------------------------



2500 ↑ ADABN		VGSI and RNAV glidepath not coincident (VGSI Angle 3.00/TCH 49).		4 NM Holding Pattern	
*LNAV only		CUDAA		HEMEE	
MUSSL 1.9 NM to RW18		2000		004° → 2500 ← 184°	
*1.1 NM to RW18		*1060		GP 3.00° TCH 60	
RW18		2000			
1.1 0.8		3 NM		6.4 NM	
CATEGORY	A	B	C	D	
LPV DA	596-¾ 200 (200-¾)				
LNAV/ VNAV	DA	931-1¾ 535 (600-1¾)			
LNAV MDA	880-1	484 (500-1)	880-1¾	484 (500-1¾)	
CIRCLING	920-1 498 (500-1)	1040-1 618 (700-1)	1040-1¾ 618 (700-1¾)	1040-2 618 (700-2)	

EVANSVILLE, INDIANA
Amdt 2A 13OCT16

38°02'N - 87°32'W

RNAV (GPS) RWY 18

EVANSVILLE RGNL (EVV)

EC-2, 10 JUL 2025 to 07 AUG 2025

EC-2, 10 JUL 2025 to 07 AUG 2025

EVANSVILLE, INDIANA

AL-513 (FAA)

25219

WAAS CH 50421 W18A	APP CRS 184°	Rwy Ldg 5498 TDZE 396 Apt Elev 422
--	------------------------	---

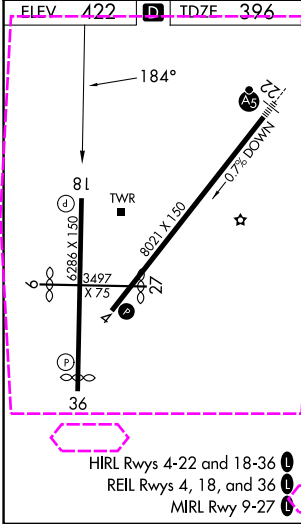
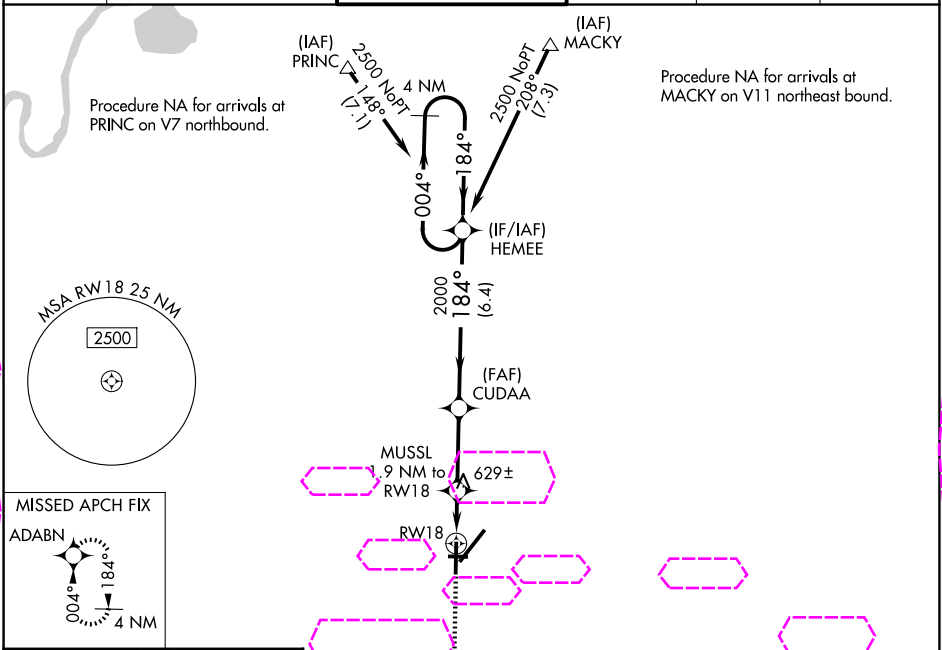
RNAV (GPS) RWY 18

EVANSVILLE RGNL (EVV)

ASR For uncompensated Baro-VNAV systems, LNAV/VNAV NA below -15°C (5°F) or above 54°C (130°F). DME/DME RNP-0.3 NA. Circling Rwy 9 NA at night. Helicopter visibility reduction below ¾ SM NA.

MISSED APPROACH: Climb to 2500 direct ADABN and hold.

ATIS 120.2	EVANSVILLE APP CON ★ 124.025 290.9	EVANSVILLE TOWER ★ 118.7 (CTAF) 257.8	GND CON 121.9	CLNC DEL 126.6	UNICOM 122.95
----------------------	--	---	-------------------------	--------------------------	-------------------------



2500	ADABN	VGSI and RNAV glidepath not coincident (VGSI Angle 3.00/TCH 49).				4 NM Holding Pattern
		MUSSL 1.9 NM to RW18	CUDAA	HEMEE		
		*1.1 NM to RW18				
			*1060			
		1.1	0.8	3 NM	6.4 NM	
CATEGORY	A	B	C	D		
LPV DA	596-¾ 200 (200-¾)					
LNAV/VNAV DA	931-1¾ 535 (600-1¾)					
LNAV MDA	880-1	484 (500-1)	880-1¾	484 (500-1¾)		
CIRCLING	920-1 498 (500-1)	1040-1 618 (700-1)	1040-1¾ 618 (700-1¾)	1040-2 618 (700-2)		

EVANSVILLE, INDIANA
Amdt 2A 13OCT16

38°02'N - 87°32'W

RNAV (GPS) RWY 18

EVANSVILLE RGNL (EVV)

EC-2, 07 AUG 2025 to 04 SEP 2025

EC-2, 07 AUG 2025 to 04 SEP 2025