

EVANSVILLE, INDIANA

AL-513 (FAA)

23278

LOC/DME I-DSO 109.9 Chan 36	APP CRS 041°	Rwy Idg TDZE Apt Elev 8021 389 422
---	------------------------	--

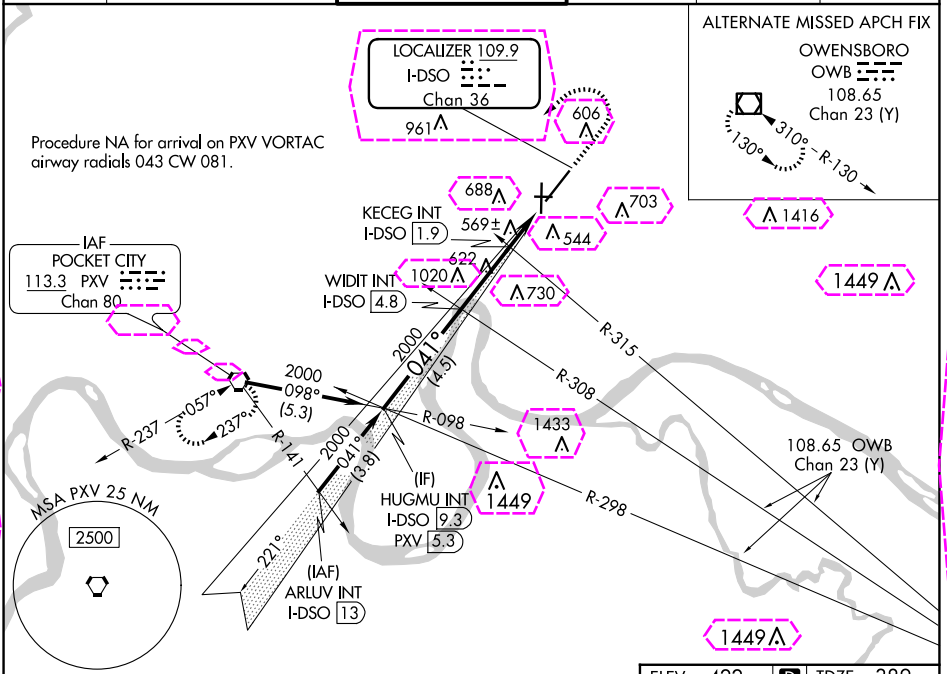
ILS or LOC RWY 4

EVANSVILLE RGNL (EVV)

 Circling Rwy 9 NA at night.

MISSED APPROACH: Climb to 1500 then climbing left turn to 2500 direct PXV VORTAC and hold.

ATIS 120.2	EVANSVILLE APP CON ★ 124.025 290.9	EVANSVILLE TOWER ★ 118.7 (CTAF) 257.8	GND CON 121.9	CLNC DEL 126.6	UNICOM 122.95
----------------------	--	---	-------------------------	--------------------------	-------------------------



EVANSVILLE, INDIANA


AL-513 (FAA)

25219

LOC/DME I-DSO 109.9 Chan 36	APP CRS 041°	Rwy Ldg TDZE Apt Elev 8021 389 422
---	------------------------	--

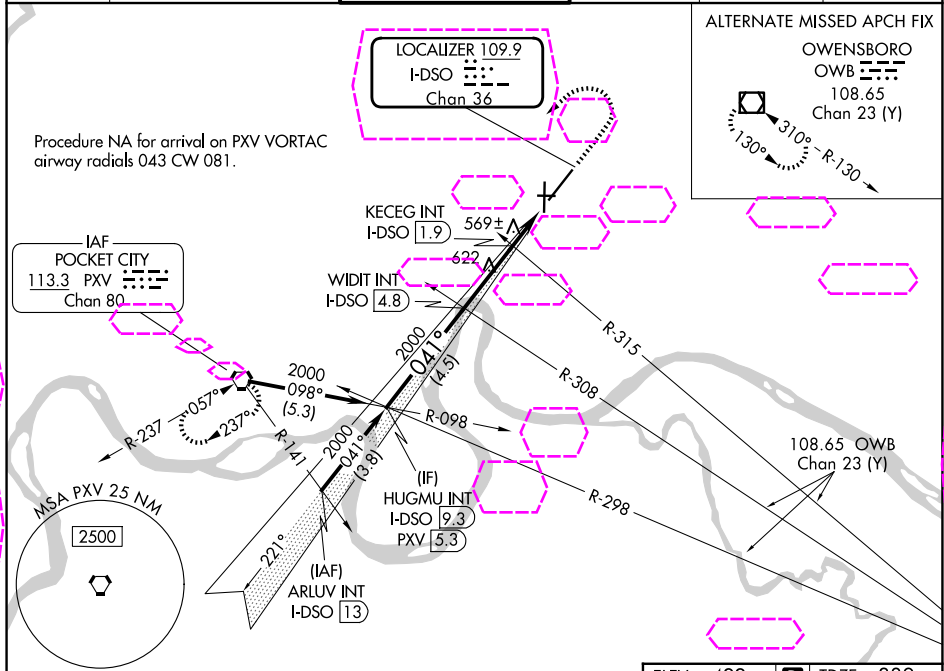
ILS or LOC RWY 4

EVANSVILLE RGNL (EVV)

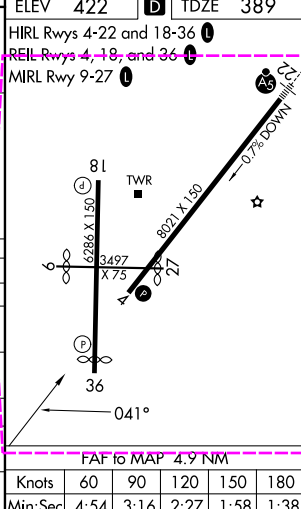
 Circling Rwy 9 NA at night.

MISSED APPROACH: Climb to 1500 then climbing left turn to 2500 direct PXV VORTAC and hold.

ATIS 120.2	EVANSVILLE APP CON ★ 124.025 290.9	EVANSVILLE TOWER ★ 118.7 (CTAF) 257.8	GND CON 121.9	CLNC DEL 126.6	UNICOM 122.95
----------------------	--	---	-------------------------	--------------------------	-------------------------



HUGMU INT I-DSO 9.3		WIDIT INT I-DSO 4.8		*LOC only		1500	2500	PXV	ELEV 422 D TDZE 389
2000		2000		*1180		I-DSO DME ANTENNA		HIRL Rwy 4-22 and 18-36 REIL Rwy 4, 18, and 36 MIRL Rwy 9-27	
GS 3.00° TCH 49		2000		*I-DSO 1.1		I-DSO 0.2			
4.5 NM		2.8 NM		0.9 NM		1.2 NM			
CATEGORY	A	B	C	D					
S-ILS 4	589-3/4 200 (200-3/4)								
S-LOC 4	1180-1 791 (800-1)	1180-1 1/4 791 (800-1 1/4)	1180-2 1/2	791 (800-2 1/2)					
CIRCLING	1180-1 758 (800-1)	1180-1 1/4 758 (800-1 1/4)	1180-2 1/2	758 (800-2 1/2)					
KECEG FIX MINIMUMS (DUAL VOR RECEIVERS OR DME REQUIRED)									
S-LOC 4	820-1	431 (400-1)	820-1 1/4	431 (400-1 1/4)					
CIRCLING	920-1 498 (500-1)	1040-1 618 (700-1)	1040-1 3/4 618 (700-1 3/4)	1040-2 618 (700-2)					
					Knots 60 90 120 150 180 Min:Sec 4:54 3:16 2:27 1:58 1:38				



EVANSVILLE, INDIANA
Amdt 4 02MAR17

38°02'N-87°32'W

EVANSVILLE RGNL (EVV)

ILS or LOC RWY 4

EC-2, 07 AUG 2025 to 04 SEP 2025

EC-2, 07 AUG 2025 to 04 SEP 2025