

EVANSVILLE, INDIANA

AL-513 (FAA)


23278


LOC/DME I-EVV 109.9 Chan 36	APP CRS 221°	Rwy Idg TDZE Apt Elev 8021 422 422
---	------------------------	--

ILS or LOC RWY 22

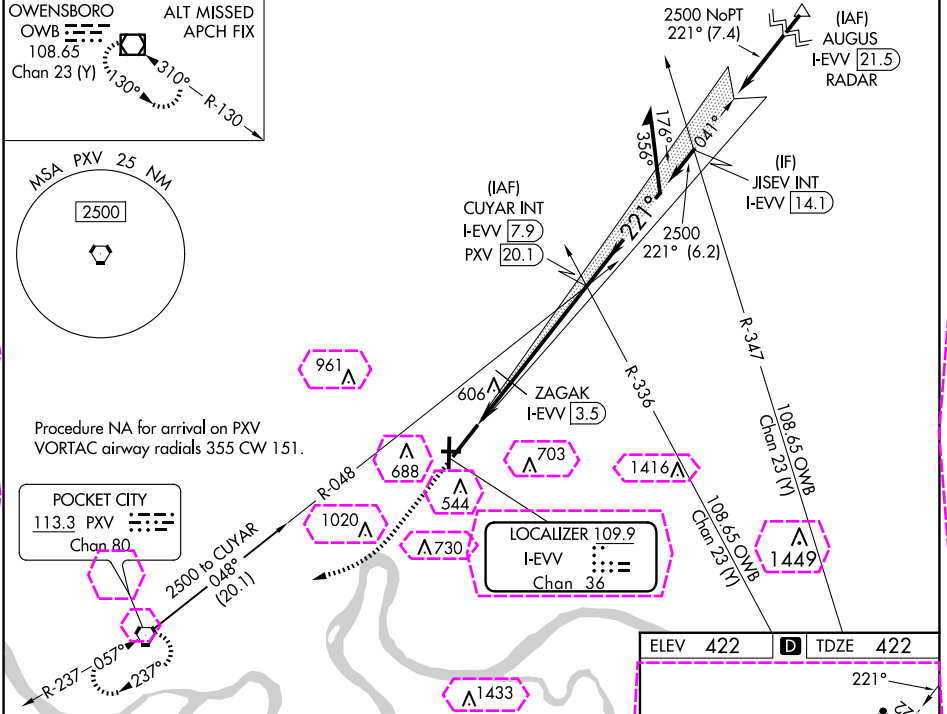
EVANSVILLE RGNL (EVV)

RADAR or DME required for procedure entry at AUGUS.

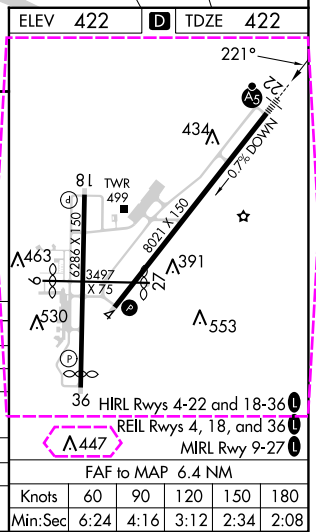
MAISR  MISSED APPROACH: Climb to 1000 then climbing right turn to 2500 direct PXV VORTAC and hold.

ASR  Circling Rwy 9 NA at night. For inop ALS, increase S-LOC 22 Cats C and D visibility to 1¾ SM. DME minimums: For inop ALS, increase S-LOC 22 Cats C and D visibility to RVR 6000. * RVR 1800 authorized with use of FD or AP or HUD to DA.

ATIS 120.2	EVANSVILLE APP CON ★ 124.025 290.9	EVANSVILLE TOWER ★ 118.7 (CTAF) 257.8	GND CON 121.9	CLNC DEL 126.6	UNICOM 122.95
----------------------	--	---	-------------------------	--------------------------	-------------------------



1000 2500 PXV	CUYAR INT I-EVV 7.9	2500	041°	221°	2500	GS 3.00° TCH 50
I-EVV 1.5	I-EVV 2.6	I-EVV 3.5	1060	1060	1060	
1.2 NM	0.9 NM	4.4 NM				
CATEGORY	A	B	C	D		
S-ILS 22*		622/24	200 (200-½)			
S-LOC 22	1060/24	638 (700-½)	1060-1¾ 638 (700-¾)	638 (700-1¾)		
CIRCLING	1060-1	638 (700-1)	1060-1¾ 638 (700-¾)	1060-2 638 (700-2)		
ZAGAK FIX MINIMUMS (DME REQUIRED)						
S-LOC 22	840/24	418 (500-½)	840/40	418 (500-¾)		
CIRCLING	920-1 498 (500-1)	1040-1 618 (700-1)	1040-1¾ 618 (700-¾)	1040-2 618 (700-2)		



EVANSVILLE, INDIANA
Amdt 24 08SEP22

38°02'N-87°32'W

EVANSVILLE RGNL (EVV)
ILS or LOC RWY 22

EC-2, 10 JUL 2025 to 07 AUG 2025

EC-2, 10 JUL 2025 to 07 AUG 2025

EVANSVILLE, INDIANA

AL-513 (FAA)

25219

LOC/DME I-EVV 109.9 Chan 36	APP CRS 221°	Rwy Ldg TDZE Apt Elev 422	8021 422 422
---	------------------------	--	---

ILS or LOC RWY 22

EVANSVILLE RGNL (EVV)

RADAR or DME required for procedure entry at AUGUS.

⚠ Circling Rwy 9 NA at night. For inop ALS, increase S-LOC 22 Cats C and D visibility to 1¼ SM. DME minimums: For inop ALS, increase S-LOC 22 Cats C and D visibility to RVR 6000. * RVR 1800 authorized with use of FD or AP or HUD to DA.



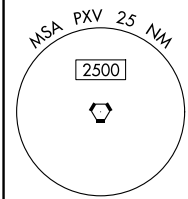
MISSED APPROACH: Climb to 1000 then climbing right turn to 2500 direct PXV VORTAC and hold.

ATIS 120.2	EVANSVILLE APP CON ★ 124.025 290.9	EVANSVILLE TOWER ★ 118.7 (CTAF) 257.8	GND CON 121.9	CLNC DEL 126.6	UNICOM 122.95
----------------------	--	---	-------------------------	--------------------------	-------------------------

OWENSBORO
OWB
108.65
Chan 23 (Y)

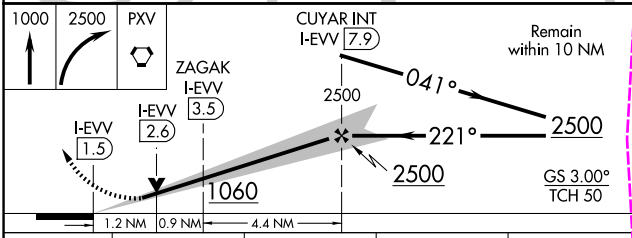
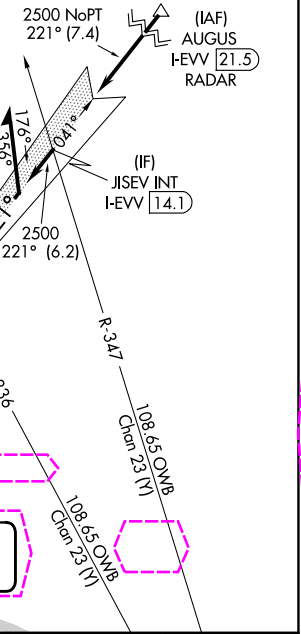
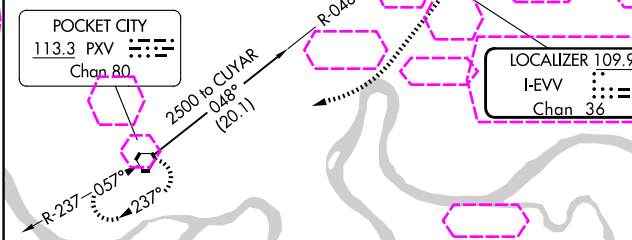
ALT MISSED
APCH FIX

130° 310° R-130



Procedure NA for arrival on PXV
VORTAC airway radials 355 CW 151.

POCKET CITY
113.3 PXV
Chan 80



ELEV 422	D	TDZE 422
----------	---	----------

81
TWB
8021 X 150
8497 X 75
36 HIRL Rwy 4-22 and 18-36
REIL Rwy 4, 18, and 36
MIRL Rwy 9-27

CATEGORY	A	B	C	D
S-ILS 22*	622/24		200 (200-½)	
S-LOC 22	1060/24	638 (700-½)	1060-1¾ 638 (700-¾)	638 (700-1¾)
CIRCLING	1060-1	638 (700-1)	1060-1¾ 638 (700-¾)	1060-2 638 (700-2)
ZAGAK FIX MINIMUMS (DME REQUIRED)				
S-LOC 22	840/24	418 (500-½)	840/40	418 (500-¾)
CIRCLING	920-1 498 (500-1)	1040-1 618 (700-1)	1040-1¾ 618 (700-¾)	1040-2 618 (700-2)

EVANSVILLE, INDIANA
Amdt 24 08SEP22

38°02'N-87°32'W

EVANSVILLE RGNL (EVV)

ILS or LOC RWY 22

EC-2, 07 AUG 2025 to 04 SEP 2025

EC-2, 07 AUG 2025 to 04 SEP 2025