

LYNCHBURG, VIRGINIA

AL-499 (FAA)

23110

VOR/DME LYH	Rwy Idg	7100
109.2	TDZE	938
Chan 29	Apt Elev	938

APP CRS
207°

VOR RWY 22

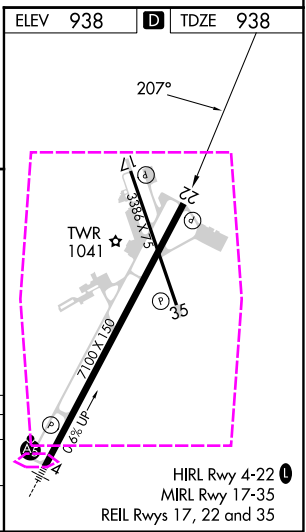
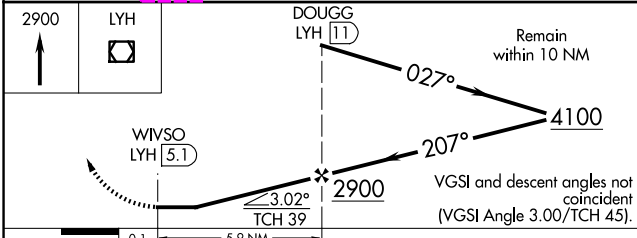
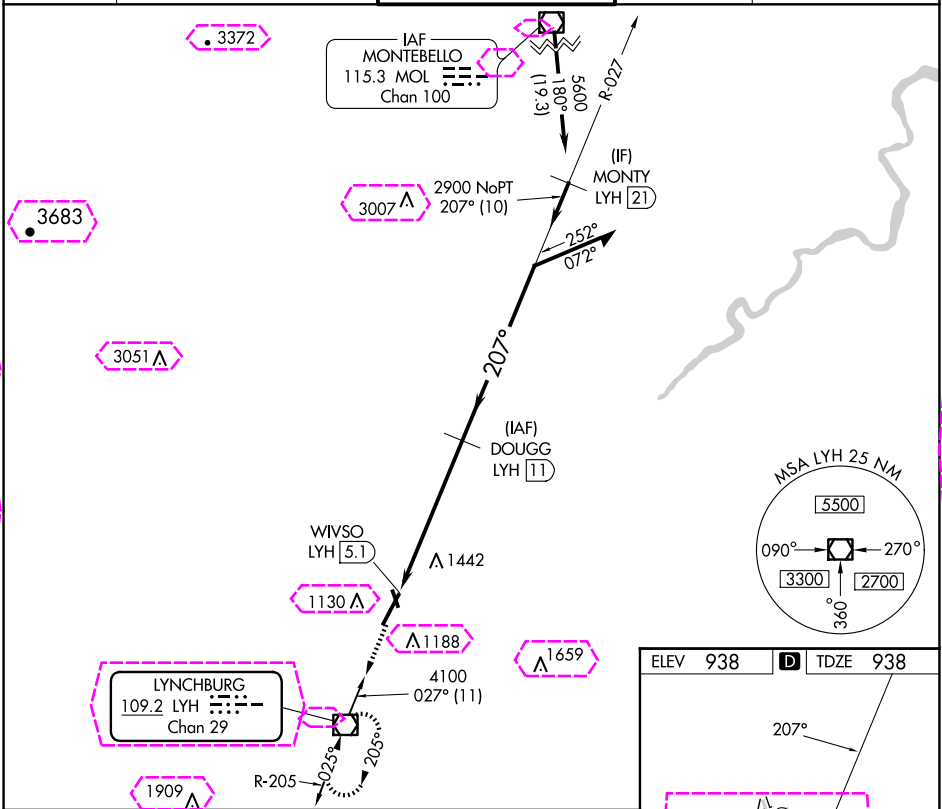
LYNCHBURG RGNL/PRESTON GLENN FLD (LYH)

DME required.

V Rwy 22 helicopter visibility reduction below $\frac{3}{4}$ SM NA.
A Circling Rwy 17 NA at night.

MISSED APPROACH: Climb to 2900
direct LYH VOR/DME and hold.

ATIS 119.8	ROANOKE APP CON 135.0 254.325	LYNCHBURG TOWER ★ 127.65 (CTAF) 257.8	GND CON 121.9	UNICOM 122.95
---------------	----------------------------------	--	------------------	------------------



CATEGORY	A	B	C	D
S-22	1740-1 802 (900-1)	1740-1¼ 802 (900-1¼)	1740-2¼ 802 (900-2¼)	1740-2½ 802 (900-2½)
CIRCLING	1740-1 802 (900-1)	1780-1¼ 842 (900-1¼)	1800-2½ 862 (900-2½)	1800-2¾ 862 (900-2¾)

LYNCHBURG, VIRGINIA
Amdt 8D 03JAN19

LYNCHBURG RGNL/PRESTON GLENN FLD (LYH)
37°20'N-79°12'W

VOR RWY 22

NE-3, 10 JUL 2025 to 07 AUG 2025

NE-3, 10 JUL 2025 to 07 AUG 2025

LYNCHBURG, VIRGINIA

AL-499 (FAA)

25219

VOR/DME LYH	Rwy Ldg	7100
109.2	TDZE	938
Chan 29	Apt Elev	938

APP CRS	207°
---------	------

VOR RWY 22

LYNCHBURG RGNL/PRESTON GLENN FLD (LYH)

DME required.

▼

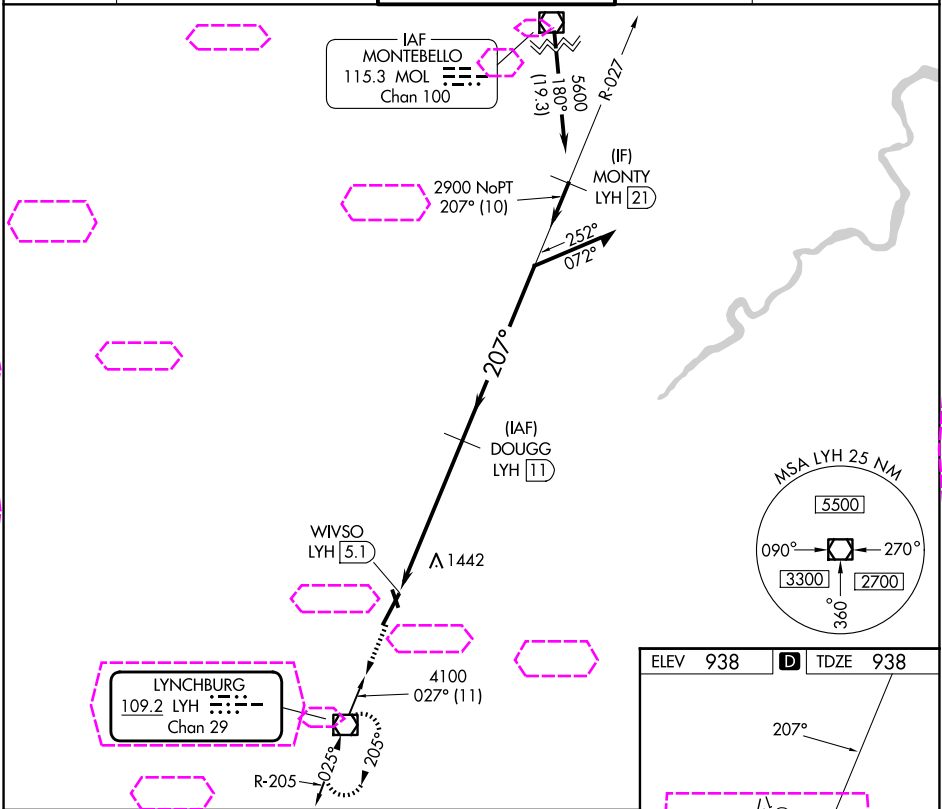
Rwy 22 helicopter visibility reduction below ¾ SM NA.

▲

Circling Rwy 17 NA at night.

MISSED APPROACH: Climb to 2900 direct LYH VOR/DME and hold.

ATIS 119.8	ROANOKE APP CON 135.0 254.325	LYNCHBURG TOWER ★ 127.65 (CTAF) 257.8	GND CON 121.9	UNICOM 122.95
---------------	----------------------------------	--	------------------	------------------



2900

LYH

WIVSO LYH (5.1)

DOUGG LYH (11)

Remain within 10 NM

4100

207°

027°

2900

3.02°

TCH 39

5.9 NM

VGSI and descent angles not coincident (VGSI Angle 3.00/TCH 45).

CATEGORY	A	B	C	D
S-22	1740-1 802 (900-1)	1740-1¼ 802 (900-1¼)	1740-2¼ 802 (900-2¼)	1740-2½ 802 (900-2½)
CIRCLING	1740-1 802 (900-1)	1780-1¼ 842 (900-1¼)	1800-2½ 862 (900-2½)	1800-2¾ 862 (900-2¾)

ELEV 938 TDZE 938

207°

3366 X 15

TWR

7100 X 150

0.45° Up

35

HIRL Rwy 4-22
MIRL Rwy 17-35
REIL Rws 17, 22 and 35

NE-3, 07 AUG 2025 to 04 SEP 2025

NE-3, 07 AUG 2025 to 04 SEP 2025