

LYNCHBURG, VIRGINIA

AL-499 (FAA)

23110

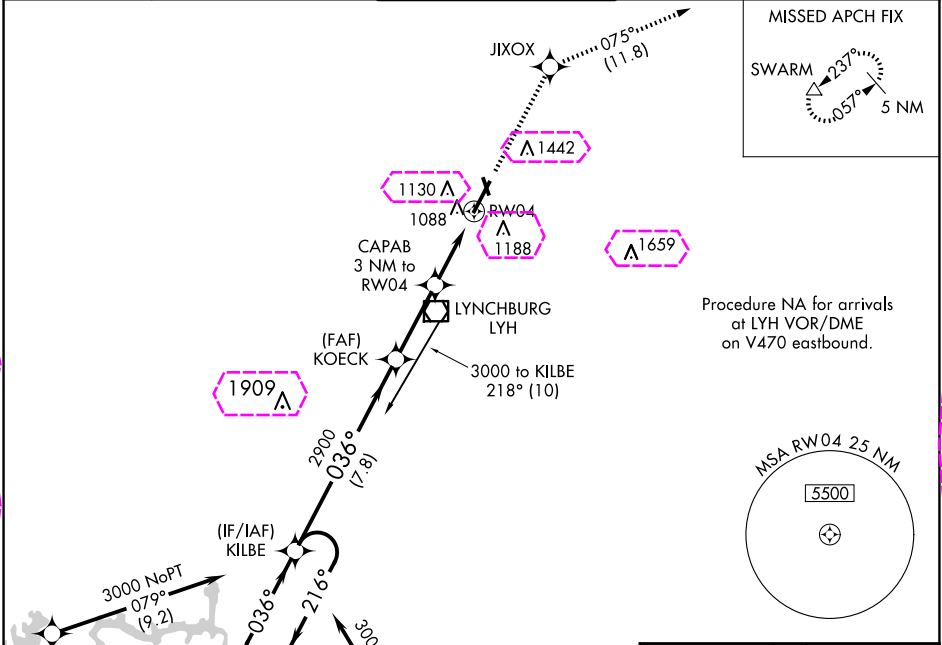
WAAS CH 58205 W04A	APP CRS 036°	Rwy Idg 6800 TDZE 905 Apt Elev 938
--	------------------------	---

RNAV (GPS) RWY 4

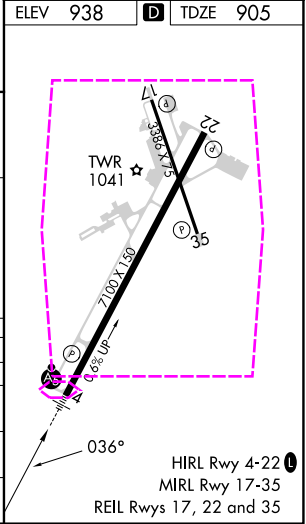
LYNCHBURG RGNL/PRESTON GLENN FLD (LYH)

RNP APCH.	MALSR	MISSED APPROACH: Climb to 3500 direct JIXOX and track 075° to SWARM and hold.
For uncompensated Baro-VNAV systems, LNAV/VNAV NA below -16°C or above 47°C. For inop ALS, increase LNAV Cat A and B visibility to RVR 5000. Circling Rwy 17 NA at night.		

ATIS 119.8	ROANOKE APP CON 135.0 254.325	LYNCHBURG TOWER ★ 127.65 (CTAF) 0 257.8	GND CON 121.9	UNICOM 122.95
----------------------	---	---	-------------------------	-------------------------



5 NM Holding Pattern		3500	JIXOX	SWARM
KILBE		↑	✧	tr 075°
6000 ← 216°		*LNAV only		
3000 → 036°				
GP 3.00° TCH 58				
2900		CAPAB 3 NM to *1.4 NM to RW04		
2900		RW04		
7.8 NM		3 NM		
1.6 NM		1.4 NM		
CATEGORY	A	B	C	D
LPV DA	1175/40		270 (300-¾)	
LNAV/VNAV DA	1394/60		489 (500-1¼)	
LNAV MDA	1400/40 495 (500-¾)		1400/50 495 (500-1)	
CIRCLING	1660-1 722 (800-1)	1780-1¼ 842 (900-1¼)	1800-2½ 862 (900-2½)	1800-2¾ 862 (900-2¾)



LYNCHBURG, VIRGINIA
Orig-B 03JAN19

LYNCHBURG RGNL/PRESTON GLENN FLD (LYH)
37°20'N-79°12'W

RNAV (GPS) RWY 4

NE-3, 10 JUL 2025 to 07 AUG 2025

NE-3, 10 JUL 2025 to 07 AUG 2025

LYNCHBURG, VIRGINIA

AL-499 (FAA)

25219

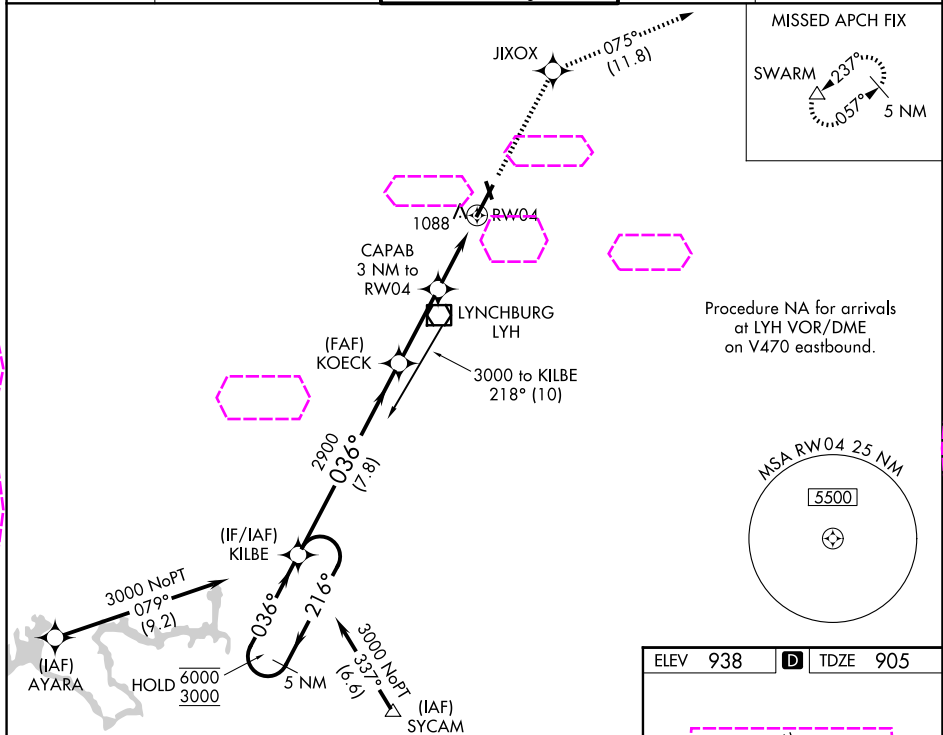
WAAS CH 58205 W04A	APP CRS 036°	Rwy Ldg TDZE 905 Apt Elev 938
--	------------------------	---

RNAV (GPS) RWY 4

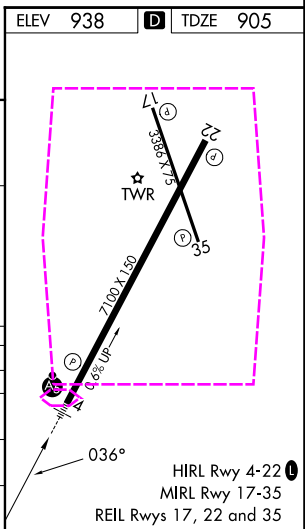
LYNCHBURG RGNL/PRESTON GLENN FLD (LYH)

RNP APCH.	MALSR	MISSED APPROACH: Climb to 3500 direct JIXOX and track 075° to SWARM and hold.
For uncompensated Baro-VNAV systems, LNAV/VNAV NA below -16°C or above 47°C. For inop ALS, increase LNAV Cat A and B visibility to RVR 5000. Circling Rwy 17 NA at night.		

ATIS 119.8	ROANOKE APP CON 135.0 254.325	LYNCHBURG TOWER ★ 127.65 (CTAF) 0 257.8	GND CON 121.9	UNICOM 122.95
----------------------	---	---	-------------------------	-------------------------



5 NM Holding Pattern		3500	JIXOX	SWARM
KILBE		↑	✧	tr 075°
6000 ← 216°		2900	*LNAV only	
3000 → 036°		CAPAB 3 NM to RW04	RW04	
GP 3.00°		2900	*1900	
TCH 58		7.8 NM	3 NM	1.6 NM
CATEGORY	A	B	C	D
LPV DA	1175/40		270 (300-¾)	
LNAV/VNAV DA	1394/60		489 (500-1¼)	
LNAV MDA	1400/40	495 (500-¾)	1400/50	495 (500-1)
CIRCLING	1660-1 722 (800-1)	1780-1¼ 842 (900-1¼)	1800-2½ 862 (900-2½)	1800-2¾ 862 (900-2¾)



LYNCHBURG, VIRGINIA
Orig-B 03JAN19

LYNCHBURG RGNL/PRESTON GLENN FLD (LYH)
37°20'N-79°12'W

RNAV (GPS) RWY 4

NE-3, 07 AUG 2025 to 04 SEP 2025

NE-3, 07 AUG 2025 to 04 SEP 2025