

LYNCHBURG, VIRGINIA

AL-499 (FAA)

23110

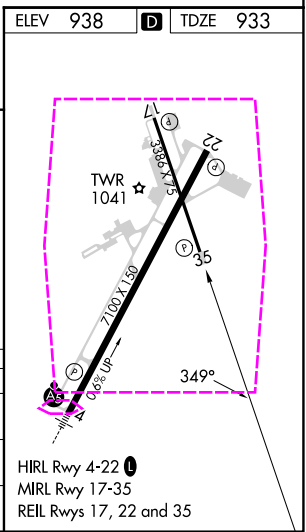
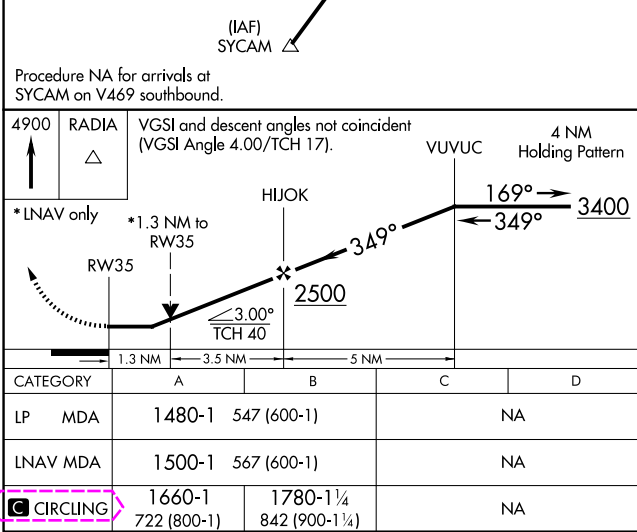
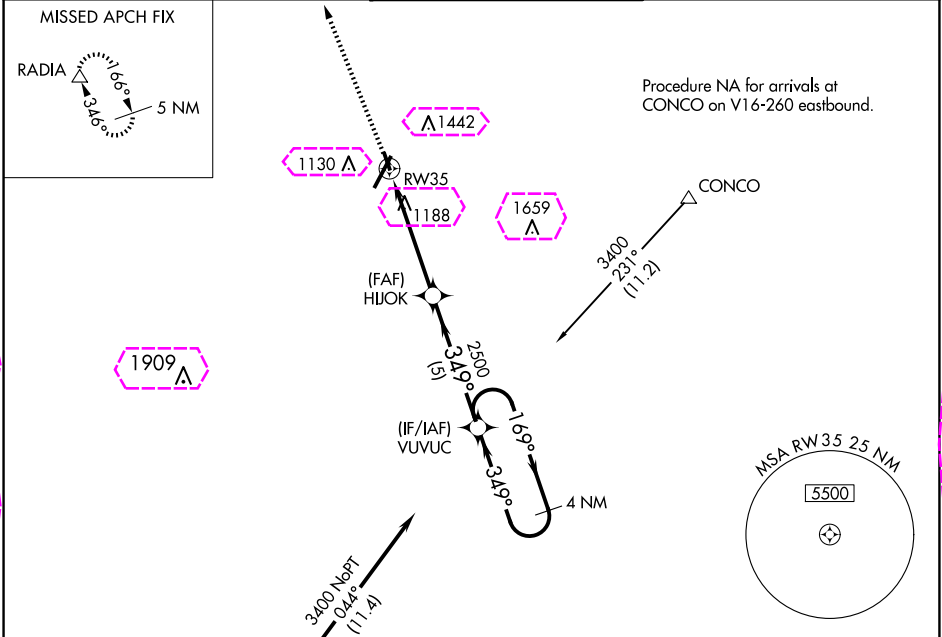
WAAS CH 93634 W35A	APP CRS 349°	Rwy Idg TDZE 933 Apt Elev 938	3386
--	------------------------	---	-------------

RNAV (GPS) RWY 35

LYNCHBURG RGNL/PRESTON GLENN FLD (LYH)

RNP APCH.	MISSED APPROACH: Climb to 4900 direct RADIA and hold.
▼ Circling Rwy 17 NA at night. ▲ Rwy 35 helicopter visibility reduction below ¾ SM NA.	

ATIS 119.8	ROANOKE APP CON 135.0 254.325	LYNCHBURG TOWER ★ 127.65 (CTAF) 0 257.8	GND CON 121.9	UNICOM 122.95
----------------------	---	---	-------------------------	-------------------------



LYNCHBURG, VIRGINIA
Orig-B 06DEC18

LYNCHBURG RGNL/PRESTON GLENN FLD (LYH)
37°20'N-79°12'W
RNAV (GPS) RWY 35

NE-3, 10 JUL 2025 to 07 AUG 2025

NE-3, 10 JUL 2025 to 07 AUG 2025

LYNCHBURG, VIRGINIA

AL-499 (FAA)

25219

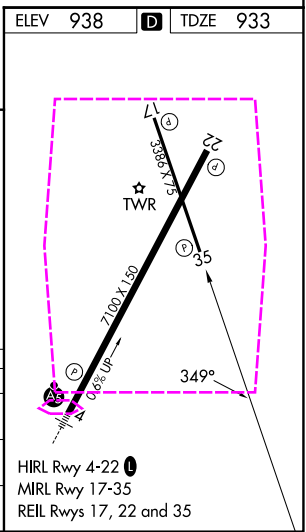
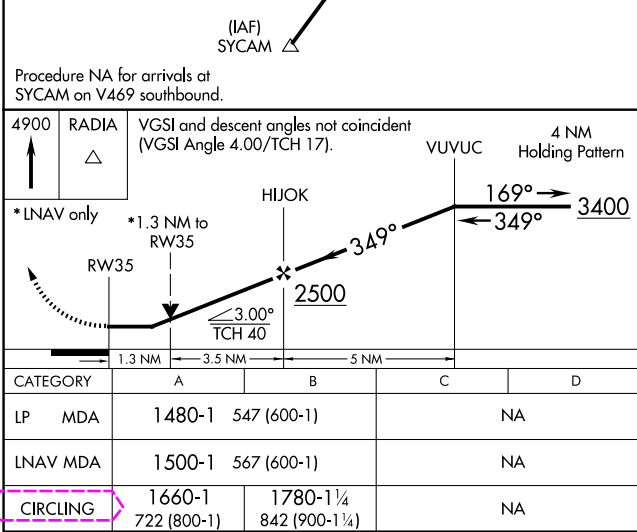
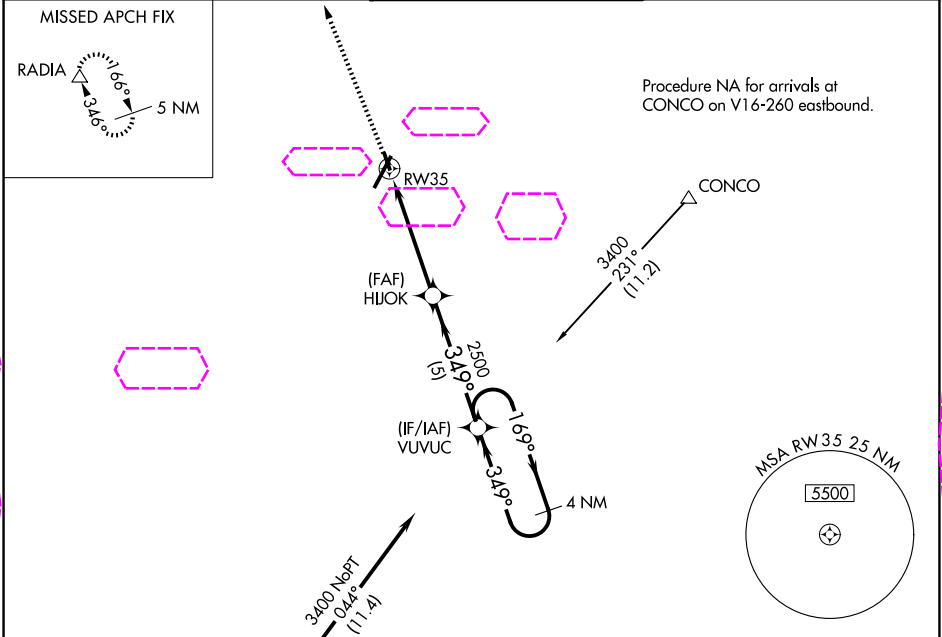
WAAS CH 93634 W35A	APP CRS 349°	Rwy Ldg TDZE 933 Apt Elev 938
--	------------------------	---

RNAV (GPS) RWY 35

LYNCHBURG RGNL/PRESTON GLENN FLD (LYH)

RNP APCH.	MISSED APPROACH: Climb to 4900 direct RADIA and hold.
Circling Rwy 17 NA at night. Rwy 35 helicopter visibility reduction below 3/4 SM NA.	

ATIS 119.8	ROANOKE APP CON 135.0 254.325	LYNCHBURG TOWER ★ 127.65 (CTAF) 0 257.8	GND CON 121.9	UNICOM 122.95
----------------------	---	---	-------------------------	-------------------------



NE-3, 07 AUG 2025 to 04 SEP 2025

NE-3, 07 AUG 2025 to 04 SEP 2025